



2023/2024 ANNUAL REPORT

Acknowledgement:

Landcare Australia is proud to acknowledge Aboriginal and Torres Strait Islander Peoples as the Traditional Custodians of the Country on which we live and work. We value and respect their deep and continued spiritual and Cultural connections to the land, waters and seas, and pay our respects to their Ancestors, and Elders past, present and future.



Table of Contents

Introduction	
Our Vision and Purpose	04 - 05
What is Landcare?	06 - 07
About Landcare Australia	08 - 11
Message from the Chairman	12 - 13
Message from the CEO	14 - 15
Landcare Australia Board of Directors	16 - 19
 2023-2024 Impact and Highlights	
Landcare Australia Impact Stats	20 - 21
Landcare Australia Communication Reach	22 - 23
Creating Healthy Rivers in North West NSW	24 - 25
Landcare Agriculture Program	26 - 27
2023/2024 State and Territory Landcare Awards	28 - 31
First Nations Landcare Working Group	32 - 35
Country Road The Biodiversity Project	36 - 37
Junior Landcare Love Letter to the Land	38 - 39
Woolworths Junior Landcare Grant Project Impact	40 - 41
Hawkes Brewing Coastal Emu Project	42 - 43
Gallagher Supporting Conservation and Biodiversity	44 - 45
United Nations Sustainability Development Goals Alignment to Landcare Australia	46 - 47
 Landcare Australia Partnerships	
Government Partners	48 - 59
Corporate Partners	50 - 55
In-Kind Supporters	56 - 57
 Landcare Australia Governance	
Landcare Australia Board of Directors	60 - 61
Consolidated Statement of Profit & Loss	62
Consolidated Statement of Financial Position	63
Consolidated Statement of Cash Flows	64
Financial Overview	65



Our Vision

All Australians actively caring for the land and water that sustains us.



Our Purpose

- ▶ Empowering individuals and communities
- ▶ Sustainable management of natural and productive landscapes
- ▶ Building resilient ecosystems and communities

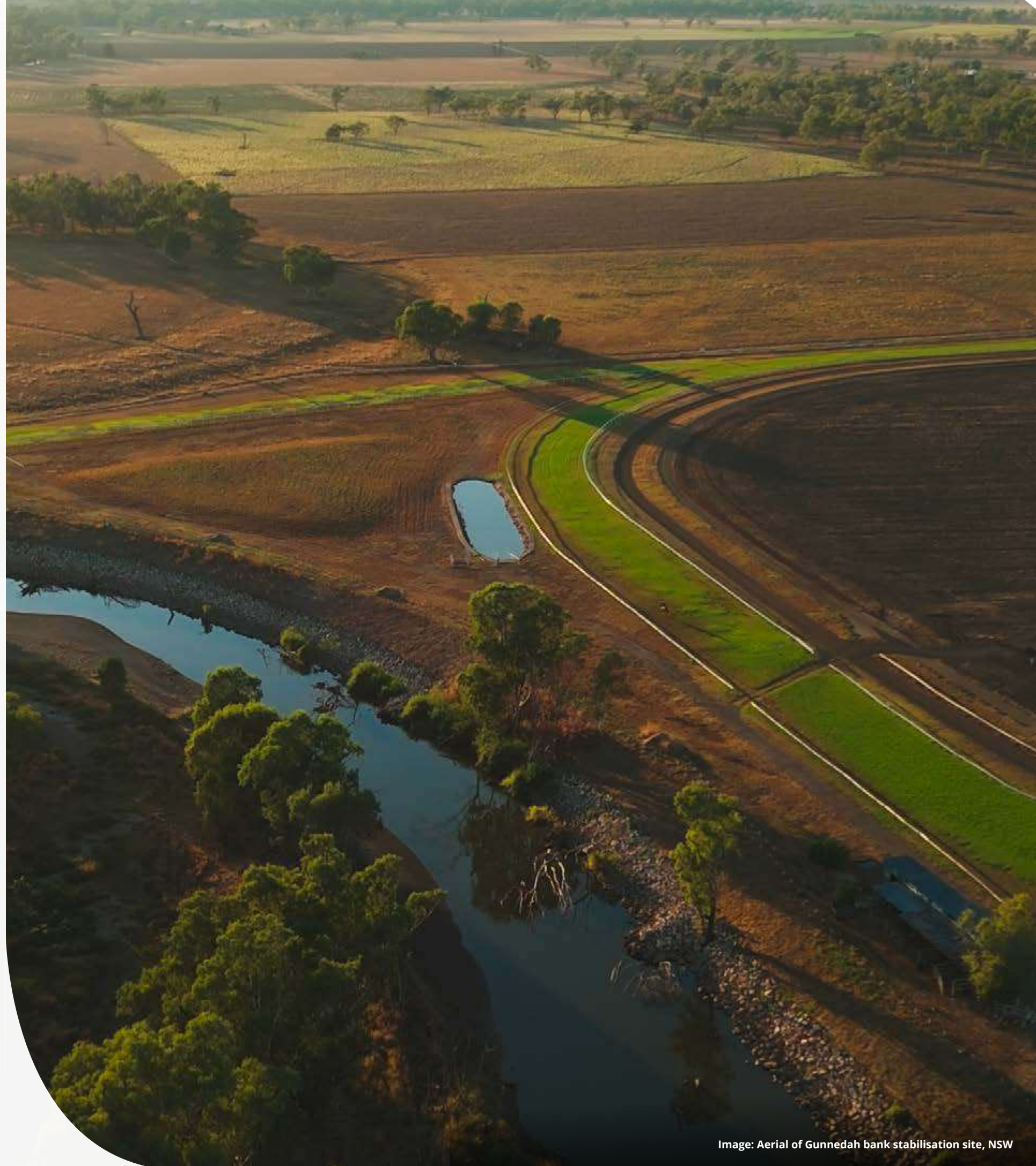


Image: Aerial of Gunnedah bank stabilisation site, NSW



What is Landcare?

Landcare is a grassroots movement of individuals, groups and organisations across Australia with a shared vision to **restore, enhance** and **protect** our natural environment. Landcare enables people to actively care for the natural environment in their community through environmental conservation and sustainable land management activities.



About Landcare Australia

Who we are

Landcare Australia is an independent, national, not-for-profit organisation established in 1989. Landcare Australia has a proven track record in environmental conservation, sustainable land management and community engagement.

Landcare Australia supports individuals, groups and organisations involved in landcare with funding, capacity-building, on-ground projects, information sharing, networking and promotion of landcare achievements.

Landcare Australia's efforts improve biodiversity, restore landscapes, build resilience in Australia's food and farming systems, and create stronger communities. With the impact of a changing climate, and natural disasters like drought, bushfires and flood, the work of landcarers has never been more important.

Established in 1989 by the late former Prime Minister, the Hon. Bob Hawke AC, Landcare Australia supports over 6,000 groups and 140,000+ volunteers with landcare projects that are focused on the enhancement, protection and conservation of Australia's land, water, soils, plants, animals and ecosystems.

What Landcare Australia does

For over 35 years, Landcare Australia has worked at the forefront of community and corporate engagement in natural resource management and environmental project delivery.

As a leader in the environmental sector, Landcare Australia has strong expertise in designing, managing and completing challenging and complex major ecological restoration projects involving large scale revegetation and carbon abatement.

Landcare Australia's efforts include investing in activities that amplify awareness and adoption of natural resource management practices which contribute to emission reductions, as well as increased farmer and landholder awareness and confidence to participate in the environmental markets.

Landcare Australia manages multiple programs and national campaigns in partnership with a diverse range of stakeholders to support the landcare movement.

This is how the Landcare Australia team supports the landcare movement:

- ▶ Secure funding and in-kind support from government, corporate and philanthropic sources to support landcare projects and activities
- ▶ Support landcare communities to deliver good quality, hands-on projects and programs that will improve environmental and sustainable production outcomes
- ▶ Engage with Traditional Owners and First Nations Peoples
- ▶ Deliver large-scale restoration projects
- ▶ Manage grants programs
- ▶ Develop education resources to share knowledge and grow capacity
- ▶ Share information via the extensive communications channels and networks including media relations, publications, events and digital platforms
- ▶ Recognise landcare achievements with Landcare Awards programs
- ▶ Create national campaigns to amplify awareness and increase participation in landcare activities such as Landcare Week, Coastcare Week, the National Landcare Conference and National Landcare Awards and Landcare in Focus magazine
- ▶ Empower the next generation of landcare leaders with funding, resources and events
- ▶ Deliver curriculum based educational resources through the Junior Landcare program for early learning childhood centres through to primary and secondary schools
- ▶ Support the adoption of sustainable agriculture practices to help deliver a more productive and profitable agriculture industry through the Landcare Agriculture program
- ▶ Support carbon sequestration initiatives that will contribute to substantial environmental improvements including biodiversity enhancement and helping to respond to and mitigate climate change
- ▶ Provide trusted, independent resources and literacy based on scientific evidence for participation in nature positive markets for sustainable land management.



Image: Landcare Australia team member Dimi Ratnayaka working on the Healthy Rivers project site in NSW

Who Landcare Australia works with

Landcare Australia works collaboratively with the landcare groups and other community-led volunteer groups, federal, state and local governments and their agencies, corporate and philanthropic partners, corporate sponsors and businesses, Traditional Owners and First Nations organisations, Landcare peak bodies, farmers and primary producers, landholders, industry bodies, researchers and academics and environmental NGOs.

Impact with our partners

Across Australia, Landcare Australia’s corporate partnerships support thousands of people involved in landcare who volunteer to protect local ecosystems that contribute to the sustainability and productivity of our land and water assets for the benefit of all Australians.

The funding and in-kind contributions raised from corporate partnerships and sponsors enables Landcare Australia to develop bespoke programs that are practical, deliverable and community focused. Through this support, Landcare Australia achieves a diverse range of positive environmental and community outcomes:

- ▶ a sustainable approach to integrated land management
- ▶ environmental protection, enhancement and conservation of land, water and waterways, coasts and animals
- ▶ natural habitat restoration to enhance biodiversity and protect endangered species
- ▶ building resilience in Australia’s food and farming systems
- ▶ creating social cohesion and wellbeing in communities.

Who is involved in landcare?

From the coast to the country, and from urban cities to the outback, landcare’s greatest asset is its people. The landcare movement is diverse and encompasses farmers and farming systems groups, primary producers, landholders, landcare groups and networks, Traditional Owners and First Nations organisations, Bushcare and ‘Friends of’ groups, Coastcare, Dunecare and Rivercare groups, landcare facilitators and coordinators, young adult groups like Intrepid Landcare and Co-Exist, youth groups and other community groups involved in protecting, enhancing or restoring their local environment. The Junior Landcare program provides a pathway for children to become lifelong landcarers starting with early learning childhood centres through to primary and secondary schools.

Traditional Owners and First Nations Peoples

Landcare Australia is committed to integrating First Nations perspectives into environmental stewardship efforts. Landcare Australia’s work with the First Nations Landcare Working Group - an advisory committee to the Landcare Australia board - has been instrumental in guiding a commitment to meaningful engagement and collaboration with First Nations Peoples.

Incorporating First Nations perspectives is a core element of Landcare Australia’s work. Landcare Australia works collaboratively with First Nations individuals, organisations and communities to integrate their knowledge and Traditions into landcare projects. This approach promotes a deeper understanding and respect for the land, water, sea and people, ensuring that thousands of years of care and wisdom are valued and included in environmental stewardship.

The First Nations Landcare Working Group guides Landcare Australia in setting the benchmark on how Landcare Australia can build respectful, effective relationships with First Nations Peoples and strengthen our commitment to integrate Traditional Owner led Cultural land and sea management into landcare practices.



Image: Doug Humann AM

Message from the Chair, Doug Humann AM

This year we have maintained our commitment to strengthening the Australian landcare community by growing the available resources for landcarers and furthering a range of productive collaborations which are building and profiling the work of the landcare community. I am immensely proud of the entire team at Landcare Australia and our achievements, and confident that the progress we have made in key areas positions us well for the opportunities and challenges ahead.

Landcare Australia Board

This year, we welcomed two new board directors, Brendan Foran and Robert Purves AM. Brendan brings a wealth of expertise in natural resource management and the environment sector, coupled with strong commercial and governance experience. Robert, with his business acumen and strong connection to environmental action, adds valuable insights and experience across environmental issues, agriculture, government and climate change. Their diverse backgrounds, expertise and fresh perspectives strengthen our strategic direction and governance, and their additional value to the board and our work is already evident.

We also said farewell to board directors Ricky Archer, Peter Sutherland, and Robert Nicholson who over the years have dedicated their efforts to the growth of Landcare Australia and support of the landcare movement. Their leadership,

commitment, and expertise have left a lasting impact on our organisation. We thank them for their respective contributions.

First Nations Landcare Working Group

Landcare Australia's First Nations Landcare Working Group (Working Group) is playing an instrumental part integrating First Nations' knowledge and practices into our landcare activities, ensuring we respect the deep connection that First Nations' people have with the land.

I was grateful to participate in the Working Group discussions this year. The members' knowledge, passion and commitment enables the Working Group to advise the Landcare Australia Board and enrich the landcare movement by building connections with First Nations' people through, practical activities that incorporate Cultural perspectives and knowledge.

The Working Group achieved a significant milestone by successfully formalising their strategic plan. This, together with the Landcare Australia organisational strategy, will provide greater support and guidance for landcarers to collaborate with First Nations' people, integrating cultural knowledge and practices into their core activities. The Working Group members, all leaders in their own right, have other important responsibilities and demands on their time. I extend my gratitude to them all and to the foundation members who have stepped down during the year.

Funding from the Australian Government

I am delighted that Landcare Australia's reputation for delivering impactful environmental and agricultural programs, has been recognised and reaffirmed by the Australian Government with an \$8.9 million investment over the next four years. This funding will enable Landcare Australia to continue leading and supporting the landcare community across Australia in environmental conservation and sustainable agriculture activities. We look forward to strengthening our relationships with all our stakeholders.

New Organisational Strategy

Landcare Australia has recently completed a comprehensive review of our strategic direction to ensure we remain responsive to emerging environmental challenges and opportunities. Through this process, we have reaffirmed our commitment to sustainable land management and supporting landcare groups, while setting a renewed focus on empowering leadership and participation across all communities.

Our New Strategic Plan Prioritises:

- ▶ revolutionising engagement with key landcare stakeholders, including First Nations people and organisations, young adults, and agricultural and pastoral communities, fostering a united and vibrant landcare movement that lead in environmental stewardship awareness and adoption;
- ▶ strengthening leadership and skills development, particularly among young adults and First Nations leaders, to drive long-term impact and build capacity within the sector; and
- ▶ seizing opportunities in emerging markets through initiatives like Landcare CarbonSMART, strategic fundraising, brand and marketing, and partnerships that support sustainable land management practices.

As we work closely with partners and collaborators, this new strategy will guide Landcare Australia to deepen its engagement, amplify its national impact, and ensure a thriving and resilient landcare movement.

Future Focus and Aspirations

While the world faces significant environmental challenges, I am continually inspired and reassured by the resilience and innovation of the landcare movement. Landcare Australia and our broader community consistently find new and effective ways to tackle climate challenges, bringing hope and positive change. I am particularly heartened by the increasing integration of First Nations perspectives into our work, enriching our projects and fostering a deeper understanding and respect for the land.

This was a significant year for us, as Landcare Australia celebrated 35 years of service. We remain committed to building on our successes and exploring new opportunities for fostering community engagement, creating partnerships, and promoting practices that benefit both the environment and local communities.

None of these achievements would be possible without the dedication of everyday landcarers, the support of our corporate, philanthropic, and government partners, and the hard work of the Landcare Australia team. In acknowledging the dedication of my fellow directors I particularly acknowledge the leadership of our CEO, Dr. Shane Norrish, and the senior management team. Together, with the entire team at Landcare Australia we are making a genuine difference and I thank them all.

Thank you also to all partners, supporters and landcarers for your continued support and commitment to Landcare Australia.



Image: Robert Nicholson, Naomi Edwards, Doug Humann AM, Anna Hooper, Robert Purves AM, James Walker and Brendan Foran. Not pictured: Rebecca Underwood



Message from the CEO, Dr Shane Norrish

Reflecting on the past year, I am greatly appreciative of the Landcare Australia team and their many accomplishments. We have always prioritised action, supporting individuals and landcare groups dedicated to restoring and managing our natural landscapes, while also delivering our own large-scale projects. This year was no exception. The ongoing challenges of decarbonisation, biodiversity loss and natural disaster recovery have reaffirmed our purpose and commitment to supporting landcare.

I am extremely grateful for the ongoing support of our corporate and government partners over the past year. With their backing, we allocated \$4.1 million to fund 1,200 projects involving 9,500 volunteers. The Woolworths Junior Landcare program reached 76,000 school children, establishing a foundation for landcarers of the future. Our other corporate partners, including 4

Pines, Country Road, Gallagher, A2 Milk, KPMG, Transurban and Brambles, contributed 43,900 hours of environmental volunteering and funded numerous successful community restoration projects that, among other achievements, planted 779,000 native trees and controlled weeds across nearly 800 hectares nationwide.

We proudly supported 281 projects that integrated First Nations perspectives and Cultural knowledge. Additionally, our funding backed an enormous 2,964 community events, increasing volunteer participation and making a tangible impact on the ground. Our communication channels excelled, achieving 266,460 website views, 10,695 webinar views, and engaging 40,769 active users on the Landcarer platform. These accomplishments underscore our commitment to restoring Australia's natural assets and highlight our significant positive impact within the broader landcare community.

This year, the Landcare Australia team also successfully managed several key projects with our partners, including Wildseek, Landcare Agriculture, and the Country Road The Biodiversity Project. These projects exemplify Landcare Australia's commitment to sustainable land management, collaboration with First Nations organisations, biodiversity protection, and supporting local communities in their important restoration efforts.

The WildSeek Project is advancing innovations in conservation through drone and AI technology to survey koala populations in partnership with Qld University of Technology (QUT) and WIRES. We have trained and equipped local groups, establishing five Community Hubs across New South Wales, Queensland, and Victoria. These hubs monitor critical koala habitats, especially in bushfire-affected areas, and contribute significantly to both local planning decisions and the National Koala Monitoring Program.

The Landcare Agriculture Program bridges agriculture and conservation, consistent with landcare's original roots. Now in its second phase with ongoing support from the Australian Government, the program has continued to focus on improving natural capital literacy, climate-smart land management, and sustainable productivity. It provided valuable resources, workshops, and training in collaboration with agribusiness, researchers, government agencies, and First Nations knowledge holders.

Our partnership with Country Road has improved biodiversity on cotton properties since 2020 by restoring native habitats and supporting threatened species, predominantly in riparian areas. Supported by Cotton Australia and the Cotton Research and Development Corporation (CRDC), this partnership has implemented five restoration projects in NSW cotton catchments, contributing to a more biodiverse agriculture sector.

Amid the escalating impacts of climate change and biodiversity loss, implementing long-term nature-based solutions and fostering collaboration are more critical than ever. The carbon market offers Landcare Australia and landcare groups the opportunity to form high-impact partnerships that benefit both local communities and biodiversity. Our new initiative,

Landcare CarbonSMART, collaborates with landholders to generate Australian Carbon Credit Units (ACCUs) through biodiverse environmental planting projects. These projects sequester carbon while restoring natural habitats and ecosystems. For landholders, the benefits include improved productivity, increased resilience, supplementary income from ACCUs, and supply chain recognition.

Our involvement in the carbon market establishes a valuable connection to this rapidly expanding sector for landcarers. In conjunction with the developing Nature Repair market, this will create significant opportunities to fund the efforts and priorities of many landcare groups. We are committed to increasing both our capacity and that of the landcare community to make this a reality in the coming years.

I greatly appreciate the outstanding support from the many contributors to our successful work, particularly Landcare Australia's staff, corporate partners, government, supporters, and the landcare community. Your contributions have been invaluable in advancing our progress. I also wish to acknowledge the exceptional contribution of our volunteer Board and Chair, Doug Humann AM, whose dedication and strategic guidance have been pivotal in steering Landcare Australia.

Our plans for the coming year are ambitious yet achievable. We will launch new partnerships to expand our reach and impact, work more closely with other landcare organisations, continue to support innovative approaches for ecological restoration, increase engagement with First Nations people, encourage youth participation, and advocate for the benefit of landcare.

I invite all partners and stakeholders to collaborate with us in the coming year. I look forward to building on the significant achievements of early landcarers and working more closely with Australia's first landcarers, our First Nations people, to create a lasting legacy of restored and productive landscapes for future generations.

Landcare Australia Board of Directors

Landcare Australia is governed by a skills-based board comprising seven non-executive directors. The Landcare Australia directors oversee the organisation’s direction, governance and work with the management team to develop and execute the strategic plan. Landcare Australia’s board members offer a range of skills that include finance, legal, risk management, government relations, business, agribusiness, environment and water management. The following people were directors during the 2023/2024 Financial Year.



D. E. Humann AM | Director since 13 December 2016

Doug Humann AM, GAICD, BA (Hons), Dip ED, was appointed Chair of Landcare Australia in 2016. With more than 40 years involvement in regional Australia, including 30 years leadership experience in the environmental sector, Doug led Bush Heritage Australia (1997–2011) to national prominence before establishing his own consultancy. Doug is primarily engaged with non-government organisations, Indigenous groups and natural resource management/catchment management authorities. Doug provides advice and support on a range of strategic, investment, project and governance matters, and is particularly involved in building partnerships, collaborations and mentoring.

Landcare Australia Committee Memberships:

Chair of Board

Chair – Governance and Remuneration Committee

Member – First Nations Landcare Working Group

Former Member – Finance & Audit Committee & Partnerships, Marketing, Communications and Fundraising Committee.



N. J. Edwards | Director since 1 January 2022

Naomi Edwards BEnvSc, BComms (Hons), MInt&CommDev, PhD Candidate (Griffith University), is based in South-East Queensland and is well known among the grassroots of landcare for co-founding Intrepid Landcare and for her fearless leadership and community advocacy. Trained in science, communications, community development and social science, Naomi currently leads information strategies to scale up community-based resource management in the Pacific.

Landcare Australia Committee Memberships:

Chair – Partnerships, Marketing, Communications and Fundraising Committee.



B. Foran | Director since 1 March 2024

Brendan Foran, MBA, ADBM, GAICD has a wealth of expertise in natural resource management and the environment sector together with strong commercial and governance experience. Brendan led Greening Australia as CEO for 11 years, driving an organisation-wide governance and strategy reform program. He was the inaugural Chair of the Australian Land Conversation Alliance (ALCA), Founding Chair of SeedX and Canopy – Nature Based Solutions, Founding Director of NatureCo, and Non-executive Director of North-East Water and the Gordon Institute of TAFE. Brendan currently Chairs the Boards of Green Collar and Austrahort and serves as a Non-Executive Director of the North East Catchment Management Authority (NECMA). He is also a Member of the Australian Government’s Nature Repair Committee and Chairs the Advisory Board at AirSeed Technologies.

Landcare Australia Committee Memberships:

Member – Finance, Risk & Audit Committee.



A. E. Hooper | Director since 1 January 2022

Anna Hooper, M.Ag.Bus, B.Ag.Sc, Grad. Dip. Law, GAICD, is a highly regarded agribusiness professional with extensive national resource management, policy, finance, and governance experience. Anna has a strong practical background in the wine industry, being a winemaker and viticulturalist in Australia and overseas. Anna has held various Board roles including with the SE NRM Board and Australian Vignerons. Anna is currently Director, Economic and Environmental Policy for Australian Grape and Wine, based in Adelaide as well as a Director of Australian Women Pilots’ Association and a Council Member of Native Vegetation Council of SA.

Landcare Australia Committee Memberships:

Chair – Finance, Risk & Audit Committee

Member – Governance & Remuneration Committee.



R. Purves AM | Director since 1 March 2024

Robert is both a businessman and environmentalist with an active business career in public companies. Over the last 20 years, he has dedicated his time to environmental issues. He has served as Chairman/Director for public companies within the health and industrial sectors. Currently, Robert is a board member of the Wentworth Group of Concerned Scientists and is a Trustee of Lizard Island Research Station. He has also served as President of WWF-Australia, a former board member of WWF-International as well as the Climate Council. In 2004, Robert established the Purves Environmental Fund, which funds numerous environmental initiatives. Robert also manages his farm in the Southern Tablelands of NSW, where he has consistently worked to improve degraded landscapes.

Landcare Australia Committee Memberships:

Member – Partnerships, Marketing, Communications and Fundraising Committee.



Rebecca Underwood | Director since 1 July 2022

Rebecca Underwood, BAgriSc, MAgriC, GradCertComm, GAICD, has over 20 years’ experience in Australian agribusiness. Rebecca started her career as an agronomist and more recently has held various senior commercial agribusiness roles. Rebecca brings a strong background in agronomy, agribusiness management, agricultural sustainability, procurement and finance. Rebecca is currently the National Sustainability Field Manager for Nutrien Ag Solutions and is passionate about providing profitable and sustainable agricultural solutions to Australian growers.

Landcare Australia Committee Memberships:

Member – Governance & Remuneration Committee

Former member – Partnerships, Marketing, Communications and Fundraising Committee.



James Walker | Director since 1 January 2022

James Walker is a fifth generation grazier operating Camden Park located near Longreach, Queensland. The property is an 8,000 Ha organic, global animal partnership (GAP) accredited cattle station that hosts agritourism and a large-scale solar farm. Being a 2012 Nuffield Scholar and awarded Australian Farmer of the Year for excellence in diversification, James has built digital platforms and generated alternative businesses models to include environmental sustainability into farmer profit streams. James was a finalist for the 2020 Bob Hawke Landcare Award. James is a board member of Opera Queensland.

Landcare Australia Committee Memberships:

Member – Partnerships, Marketing, Communications and Fundraising Committee

Former member – Finance, Risk & Audit Committee.



Peter Sutherland | Director since 18 August 2005, resigned 16 December 2023

Peter Sutherland BA, BSc (Hons) has had an extensive senior executive career in the public and private sectors in water and natural resource management. He retired from GHD as Business Leader Water Resources. Peter’s positions included; Deputy Director General DIPNR, NSW, Deputy Secretary DNRE, VIC, Deputy Commissioner on the Murray Darling Basin Commission, member of the National Land and Water Resources Audit, member of the National Taskforce on Sustainable Agriculture, and member of the Prime Minister’s Land Management Task Force. Peter is a former president of the University of Melbourne Alumni Association, Sydney branch.

Landcare Australia Committee Memberships:

Former Chair – Partnerships, Marketing, Communications and Fundraising Committee

Former member – Membership & Governance Committee

Former member – Advisory Council.



Ricky Archer | Director since 1 January 2022, resigned 28 November 2023

Ricky Archer is CEO of the North Australian Indigenous Land & Sea Management Alliance. Ricky has extensive NRM and governance experience, providing strategic input to various Indigenous and NRM organisations and committees, including as current board director of the Cooperative Research Centre for Developing Northern Australia; Chair of NT Aboriginal Land Management Advisory Group. Former committee member of the Commonwealth Marine Parks Northern Marine Park Advisory Committee; former committee member of the Commonwealth Minister for Environment Indigenous Advisory Committee; and former director of Australian IUCN. Now based in Darwin, he is a Djungan man from the Western Tablelands region of North Queensland.

Landcare Australia Committee Memberships:

Former member – First Nations Landcare Working Group.



Robert Nicholson | Director since 22 September 2014, resigned 1 May 2024

Robert Nicholson, BSc, LLM, MBA, GAICD, is a solicitor and Senior Advisor at Herbert Smith Freehills, a leading global commercial law firm. Robert is a former member of the Victorian Government’s National Parks Advisory Council, and Melbourne Parks and Waterways Advisory Council. Robert is a director of Port of Melbourne, Alinta Energy, Baker Heart and Diabetes Institute, Nucleus Network, European Australian Business Council and Electro Optic Systems.

Landcare Australia Committee Memberships:

Former member – Finance, Risk & Audit Committee

Former member – Partnerships, Marketing, Communications and Fundraising Committee.



Our Impact



1,202
Projects funded by grants

43,943

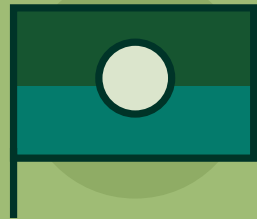
Hours of Corporate
Environmental
Volunteering



\$4.1 million
Funding for environmental projects



779,972
Trees and plants
established



281
Projects funded incorporating
Aboriginal and Torres Strait
Islander engagement
and knowledge



76,384
Students involved in
Junior Landcare projects

20,635
Plants in riparian
zones



1,926
Nest boxes installed to
support biodiversity

9,552

Volunteers involved
in Landcare Australia
funded projects



66,050
Metres of fence installed



465
Community biodiversity
surveys conducted

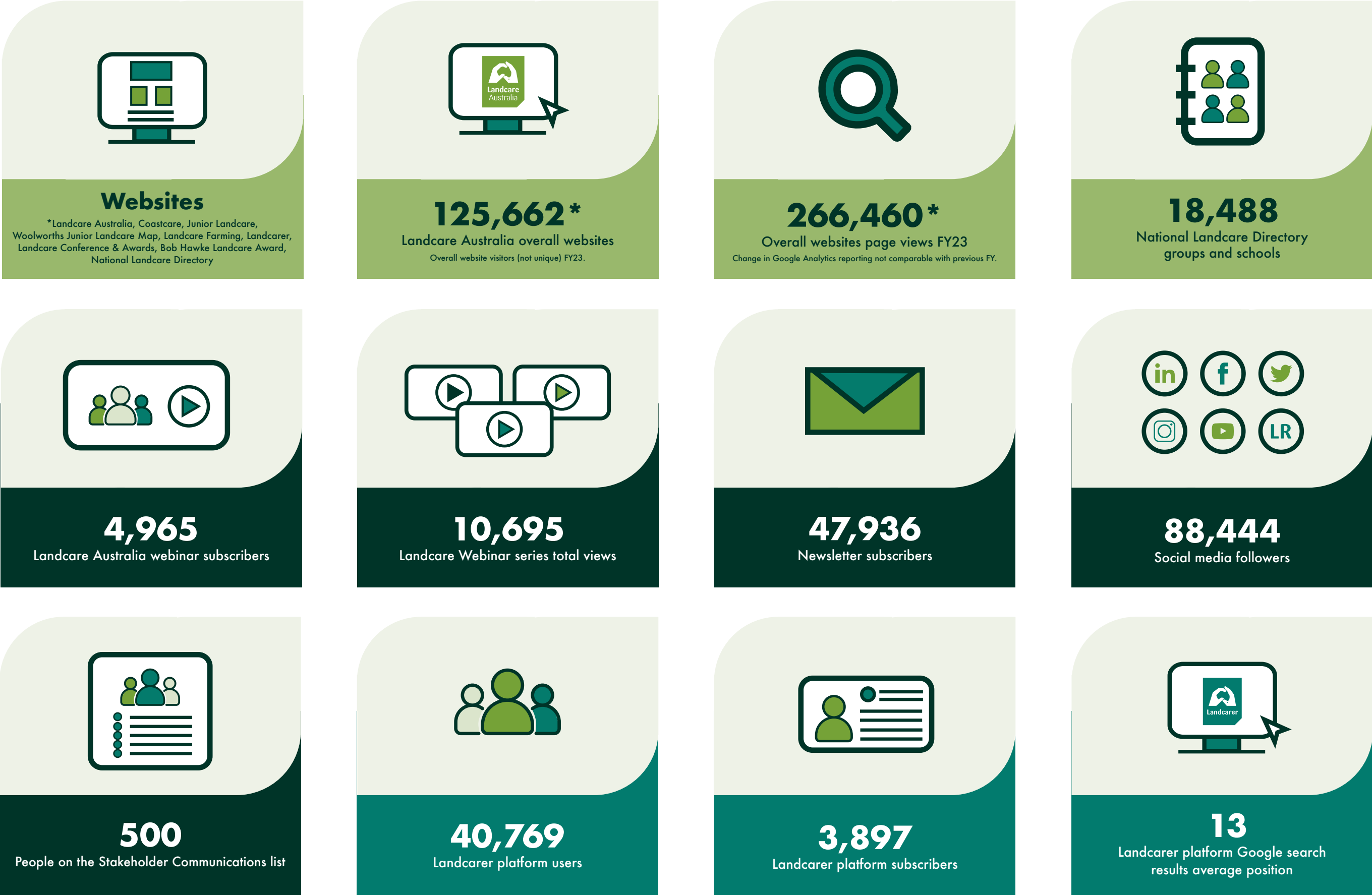


2,964
Community events supported



785
Hectares of weed control

Our Communications Reach



This website data is to June 30, 2024. The Digital Data is to October 31, 2024. For more information about our communications channels and reach please contact us via enquiries@landcareaustralia.com.au



Image: Landcare Australia team Rob Porter and Dimi Ratnayaka with Angela Baker, Local Land Services at Gunnedah, NSW



Image: Aerial of Gunnedah bank stabilisation site, NSW



Image: Landcare Australia's Tim Watts at Wallamore Anabranh in North Western NSW



Click here or scan the QR code to watch the video



Creating Healthy Rivers in North West NSW

The rivers of the Murray Darling Basin are vital water resources, home to over 120 native bird species and more than 50 native fish species.

Unfortunately, the river system suffered from extreme erosion and flooding events. With funding provided by the Australian Government's Murray-Darling Healthy Rivers Program a partnership with Fisheries NSW, Local Land Services, and OzFish, Landcare Australia took significant steps to improve the habitat of the natural assets of the Namoi Catchment. This includes bank stabilisation works, instream habitat structures, controlling weeds in riparian zones, stock exclusion fencing, and assisted regeneration using locally sourced native seedlings.

Landcare Australia, in collaboration with other not-for-profits and NSW government agencies, supported the improvement of 65 hectares of degraded floodplain, riparian, and wetland habitat within the Namoi River Catchment.

Over 450 metres of actively eroding bank along the Namoi River were reconstructed at Gunnedah with rock beaching, bank and riparian revegetation for connectivity, and the installation of rock and timber groynes to create fish habitats. Additionally, 200 individual timber pins were installed across the Wallamore Anabranh to slow water flow during high rainfall events. These measures will capture debris and sediment to protect the Anabranh from further active erosion, promoting instream habitats and improving water quality.

7,800

Seedlings planted

2 kilometres

of river frontage engineered and modified with bank stabilisation works

6 sites

Ecological restoration

65 hectares

of improved degraded floodplain, riparian and wetland habitat

“**Landcare Australia's involvement in the Healthy Rivers project again demonstrates Landcare Australia's ability to manage large scale landscape restoration projects. We are grateful for the funding from the Australian Government so that we can create effective partnerships that deliver on-ground landcare work with an aim to restore and protect our land and water assets. Managed by Landcare Australia, the Healthy Rivers project is a great example of how we work with a wide range of great partners to deliver projects at scale, including the great work of broadacre farmers, North West Local Land Services, Tamworth Regional Landcare Association and Fisheries NSW including NSW Fisheries Manager Milly Hobson.**”

Dr Shane Norrish, CEO Landcare Australia



Landcare Agriculture

The Landcare Farming Program (LFP) was a joint partnership between the National Landcare Network and Landcare Australia, funded by the Australian Government to strengthen the connection between Landcare and Australian agriculture and support primary producers to increase their knowledge, skills and confidence to engage with and implement sustainable agricultural management practices.

The Landcare Farming Program ran a series of Natural Capital Workshops across six states and territories, involving over 400 producers and landcarers in face-to-face biodiversity training with **Accounting for Nature**. The demand for these workshops demonstrated that industry has a strong interest in this space, with producers indicating they are seeking trusted information, and are considering establishing natural capital accounts for their properties and enterprises.

The Landcare Farming Program Benchmarking Project saw the completion of 13 on-farm demonstration trials covering almost 300,00 hectares of agricultural land across Australia, and directly engaging 195 producers.

The Landcare Farming Program Webinar Series hosted eight webinars with topics ranging from Tax Implications of Carbon Credit Generation, to Simplify Measuring and Recording Soil and Environment Data with FarmLab.

A key outcome of the Landcare Farming Program was collaboration with multiple stakeholders, who include Ruminati, FarmLab, Pairtree, Cibo Lab, Accounting for Nature, NSW LLS, the Commonwealth Bank of Australia, the Australian Beef and Sheep Sustainability

team, Latrobe University, University of Technology Sydney, Paraway Agriculture, the Australian Cotton Sustainability Reference Group (ACSRG), Australian Wool Innovation, Horticulture Australia, Soils For Life and MLA Producer Demonstration Site team - as well as a partnering with four of the eight national Drought Hubs.

There was strong support for the Landcare Farming strategy from the agriculture sector leading to the transition to the new Landcare Agriculture Program.



Image: Harden Landcare Group learning about applying methods of Natural Capital assessment in agricultural systems with Accounting for Nature.



Image: Barfield Road Producer Group (BRPG), Banana QLD, assessing soils.



Image: Charleville Field Work – Landcare Ag SQ Landscape workshop – growers discussing the management of western landscapes and the measurement of biodiversity in rangelands production systems.

Celebrating Nominees and Winners at the 2023/2024 State & Territory Landcare Awards

In the year that Landcare Australia and landcare as a national movement celebrates its 35th anniversary, nominations for the State and Territory Landcare Awards closed nationwide in March, resulting in a total of 402 nominations for nine national Landcare Award categories.

The State & Territory Landcare Awards take on special significance, serving as a tribute to the commitment and contributions made by individuals and groups. The Landcare Awards program recognises and celebrates the landcare volunteers and their sustainable land management and conservation efforts for over three decades.

Each state and territory invited nominations across a diverse range of Landcare Award categories, to acknowledge individuals, groups and organisations who actively participate in climate action and contribute to the development of healthier, more resilient, and productive landscapes, as well as robust communities. The call extended to volunteers, farmers, landholders, Landcare groups, First Nations Peoples, the next generation of landcarers, and environmental community groups.

In 2024, 58 awards were presented at seven ceremonies held in South Australia, Tasmania, the Australian Capital Territory, New South Wales, Queensland, Victoria and the Northern Territory.

Winners of the 2023/2024 State & Territory Landcare Award categories will represent their respective region at the 2025 National Landcare Awards.



Images: For more information visit landcareaustralia.org.au

2023/2024 State & Territory Landcare Awards Winners

Queensland

Australian Government Climate Innovation Landcare Award
Grant and Carly Burnham

Australian Government Sustainable Agriculture Landcare Award
Leather Cattle Co

Australian Government Individual Landcarer Award
Judith Roland

Australian Government Community Partnerships Landcare Award
Russell Family Park
BushCare Group

Greyhound Coastcare Award
Friends of Federation Walk

First Nations Landcare Collaboration Award
Woppaburra TUMRA Aboriginal Corporation

Women in Landcare Award
Janet Mangan

NextGen Landcare Award
Rosalinde Green-Brinkman

Woolworths Junior Landcare Award
Butchers Creek State School

New South Wales

Australian Government Climate Innovation Landcare Award
Wallabadah Community Association

Australian Government Sustainable Agriculture Landcare Award
Little River Landcare Group

Australian Government Individual Landcarer Award
Ran Mitchell

Australian Government Community Partnerships Landcare Award
Lake Macquarie Volunteer Landcare Network

Greyhound Coastcare Award
Wallabi Point Landcare

First Nations Landcare Collaboration Award
Waybali Murruway

Women in Landcare Award
Nell Chaffey

NextGen Landcare Award
Taylor Springett

Woolworths Junior Landcare Award
Wilsons Creek

Victoria

Australian Government Climate Innovation Landcare Award
Climate Adaptation Requires Youth Action - CARYA

Australian Government Sustainable Agriculture Landcare Award
The Blackwell Family

Australian Government Individual Landcarer Award
Kevin Nolte

Australian Government Community Partnerships Landcare Award
Merri Creek Management Committee

Greyhound Coastcare Award
Simon Davies

First Nations Landcare Collaboration Award
Wurundjeri Woi-wurrung Cultural Heritage Aboriginal Corporation - Narrap Unit & Darebin Creek Management Committee

Women in Landcare Award
Elizabeth Ross

NextGen Landcare Award
Bryce Watts Parker

Woolworths Junior Landcare Award
Tavish Bloom

Australia Capital Territory

Australian Government Sustainable Agriculture Landcare Award
Callum Brae - Jenny, Peter and Matthew Ipkendanz

Australian Government Individual Landcarer Award
Vera Kurz

Australian Government Community Partnerships Landcare Award
Bush on the Boundary Committee

First Nations Landcare Collaboration Award
Bradley Bell

Women in Landcare Award
Sarah Sharp

NextGen Landcare Award
Zoe Stuart McMahon

Woolworths Junior Landcare Award
Scouts ACT Venturers

Western Australia

Australian Government Climate Innovation Landcare Award
Denis Watson

Australian Government Individual Landcarer Award
Angela Rossen

Australian Government Community Partnerships Landcare Award
Dampier Peninsula Fire Working Group

Greyhound Coastcare Award
Care For Hedland Environmental Association Inc

First Nations Landcare Collaboration Award
Dampier Peninsula Fire Working Group

Women in Landcare Award
Catherine Williams

Woolworths Junior Landcare Award
South Coogee Primary School

South Australia

Australian Government Climate Innovation Landcare Award
Kate and Adrian McCabe

Australian Government Sustainable Agriculture Landcare Award
Buckleboo Station - Paroo Pastoral Company

Australian Government Individual Landcarer Award
Ian Roberts

Australian Government Community Partnerships Landcare Award
Biodiversity McLaren Vale

Greyhound Coastcare Award
Kumarangk - Hindmarsh Island Landcare Group

First Nations Landcare Collaboration Award
Nipapanha Community Aboriginal Corporation

Women in Landcare Award
Sarah Barrett

NextGen Landcare Award
The Biology Society of South Australia

Woolworths Junior Landcare Award
St Michael's Lutheran Primary School, Hahndorf

Northern Territory

Australian Government Climate Innovation Landcare Award
Dr Mark de Souza

Australian Government Sustainable Agriculture Landcare Award
Jeremy Trembath

Australian Government Individual Landcarer Award
Tony Cox

Australian Government Community Partnerships Landcare Award
McMinns Lagoon Reserve Association

Greyhound Coastcare Award
Larrakia Rangers

NextGen Landcare Award
Dr Cara Penton

Woolworths Junior Landcare Award
Students for Sustainability @ Darwin High School

Tasmania

Australian Government Climate Innovation Landcare Award
Regenerative Agriculture Network Tasmania

Australian Government Sustainable Agriculture Landcare Award
Leap Farm

Australian Government Individual Landcarer Award
Vivienne Anne Briggs

Australian Government Community Partnerships Landcare Award
The Understorey Network Inc.

Greyhound Coastcare Award
Kingston Beach Coastcare

First Nations Landcare Collaboration Award
South East Tasmanian Aboriginal Corporation in partnership with the Kingborough Council

Women in Landcare Award
Vivienne Anne Briggs

Woolworths Junior Landcare Award
Collinsvale Primary School

Thanks to our sponsors, supporters and partners



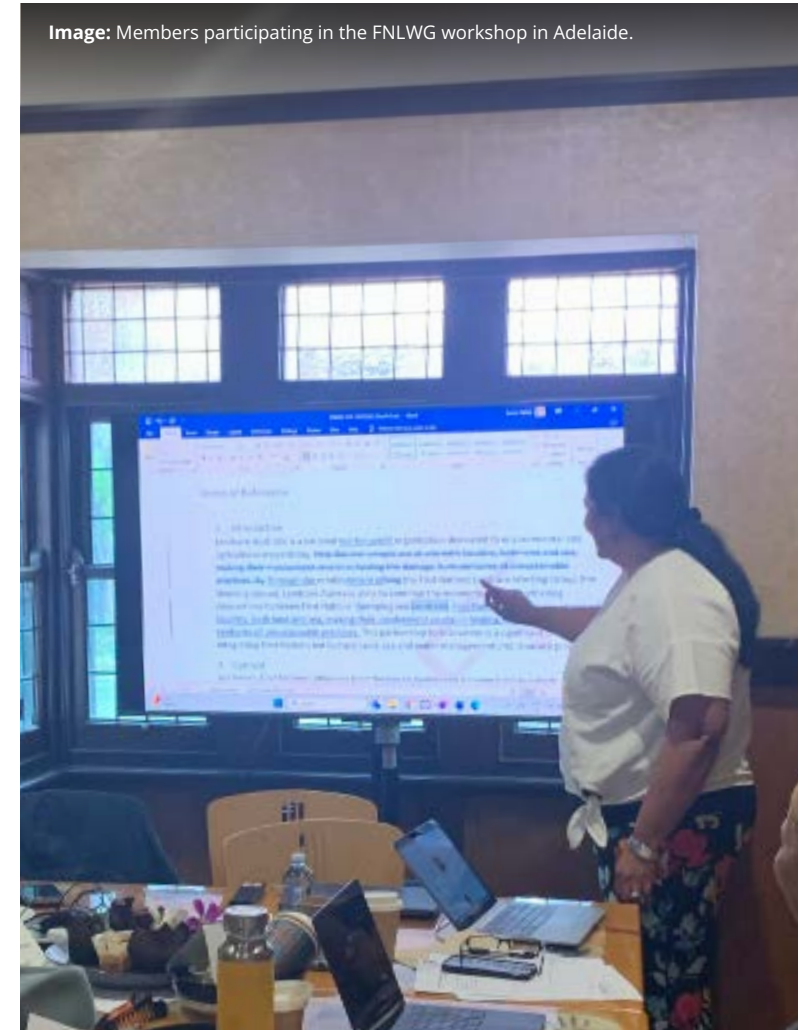
Image: Karen Walsh, Trish O’Gorman, Natalie Sommerville, Suzanne Thompson, Gail Adamson-Reynolds, Dhani Gilbert, Doug Humann AM and Melissa Higgins.



Image: Members participating in the FNLWG workshop in Adelaide.



Image: Members participating in the FNLWG workshop in Adelaide.



First Nations Landcare Working Group:

The Power of Collaboration, Resilience and Commitment to Caring for Country



The First Nations Landcare Working Group, an advisory group created by Landcare Australia to work with the board, stands as a testament to the power of collaboration, resilience, and a deep commitment to caring for Country.

Over the last 12 months, our dedicated members have continued to gather regularly, sharing not only ideas and wisdom but also their aspirations on how we can work together to support the landcare movement learn more about Cultural land management practices.

Coming together to yarn about the rich tapestry of Indigenous knowledge passed down through generations of First Nations Peoples, the members have created a Terms of Reference and Strategy that will inspire action and innovation that in time will reverberate across the landscape.

Landcare Australia has provided support for members to participate in First Nations events to help amplify their voices and advocacy for Indigenous-led land management practices. Significant events include speaking at the Garma Festival, attendance at the Australian Land Conservation Alliance (ALCA) conference in Canberra, and participation at the Firesticks Alliance’s Biri Bulmba Budang National Custodians of Country Gathering in Cairns. More events are planned to continue the work of members to foster traditional perspectives to land stewardship.

The development of branding for the First Nations Landcare Working Group symbolises not only our unity but also our commitment to action on the ground. This visual representation of our collective identity serves as a beacon, guiding us as we seek to collaborate with landcare groups nationwide to implement meaningful, community-driven projects.

Together we are sowing the seeds of change, nurturing the land, and cultivating a future where First Nations knowledge and stewardship are valued and embraced. Our journey is not just one of collaboration and resilience but of tangible impact, felt in the soil beneath our feet and the communities we serve.



**First Nations
Landcare
Working Group**

Biographies

Landcare Australia's commitment to fostering collaboration with First Nations people and organisations through the First Nations Landcare Working Group. The integration of Traditional ecological knowledge and practices promises to create a brighter, more ecologically sustainable future for the nation, fostering mutual respect, understanding, and cooperation among all Australians. Landcare Australia's Working Group provides leadership and advice to the Landcare Australia Board and works practically with Landcare Australia Executives developing targeted partnerships and achieving outcomes based on the vision and values of the Working Group's Terms of Reference. The following people were members during the 2023/2024 Financial Year.



Gail Adamson-Reynolds

Gail Adamson-Reynolds is a descendant of the Wadjuri peoples which is on the eastern boarder of the Nyungar Nation, (Esperance) she is also a descendant of the Mirrning People ("Whale people") her mother's country which stretches along the southern coast of WA to the South Australian border.

Gail is the Chairperson of the Esperance Tjaltjraak Native Title Aboriginal Corporation RNTBC (ETNTAC), a position she has held since the Corporation's establishment in 2015. She is also the Chairperson of Southeast Aboriginal Health Service, Board member on Horizon Power board, Indigenous Land and Sea Corporation, Board member on Indigenous Land and Sea Council, member of the South-west Marine Parks Advisory Committee and recently appointed to the First Nations Landcare Working Group. Gail was a previous board member of Indigenous Business Australia and a Chairperson of Goldfields Esperance Development Commission. She also runs her own business, a specialist training and consultancy company that works with Government, corporates, and mining companies such as Rio Tino and Woodside to engage with and work with first nations people.



Dhani Gilbert

Dhani Gilbert is a proud Kalari (Lachlan River) Wiradjuri young woman who's focused on achieving just and sustainable outcomes for First Nations Peoples, Country, community, and young people.

Dhani is currently a second-year university student studying a double degree at the Australian National University and a graduate certificate at Charles Sturt University. She is also the Co-chair of the ACT Youth Advisory Council, a community outreach educator with the Woodlands & Wetlands Trust and working with young women in ACT schools to facilitate culturally safe learning and community connection through weaving workshops. Dhani has a solid cultural education and has grown up involved in Caring for Country practices inclusive of seed harvesting, cultural burning, weed eradication work, native vegetation restoration and student led First Nations plant use projects. Dhani is a community driven young person passionate about doing what she can where she can to address inequality, First Nations injustice, protect our environment, empower young people, and contribute to lasting change that allows all people to thrive and flourish. Ultimately, Dhani empowers other young people to participate widely in their community, whilst also being a part of positive social change in educational spaces, cultural education and in ecological recovery actions in the ACT.



Ricky Archer

Ricky Archer is a Djungan man from the Western Tablelands region of North Qld.

Ricky has a strong network of on ground land and sea managers across northern Australia from which to draw from and has demonstrated an ability to connect on-ground work of Indigenous organisations with regional, state and commonwealth priorities. Ricky is the Director of National Parks and is supporting the protection and conservation of some of the country's most precious natural areas, including the World Heritage listed Uluru-Kata Tjuta and Kakadu National Parks and our precious marine parks. Ricky has a background in geographical information systems, Indigenous knowledge management, and natural & cultural resource management and as a ranger. He is passionate about the advancement and improvement of Indigenous livelihoods across the north.



Victor Steffensen

Victor Steffensen is an Indigenous writer, filmmaker, musician and a traditional knowledge practitioner. He is a descendant of the Tagalaka clan from North Queensland.

Much of Victor's work is based on the arts and reviving practical traditional knowledge values, particularly Aboriginal fire management, with Aboriginal and non-indigenous communities. He is a co-founder of the Firesticks Alliance which involves a large community network across Australia. Victor holds an Honorary Doctor of Science through James Cook University. He is the author of the book, Fire Country and the children's book, "Looking After Country With Fire." Through his artistic label Mulong, Victor has published music tracks and videos such as Great Land, and Cool Burning.



Barry J Hunter

Barry J Hunter is a descendant of the Djabugay speaking people of Cairns hinterland. He grew up besides the Barron River in the rainforest near Kuranda.

Barry has over 30 years' experience in Aboriginal affairs, particularly in areas of land, natural and cultural resource management. Barry's employment includes appointments in government conservation agencies, mining and exploration industry, community and not-for-profit organisations, and more recently, managing Carbon projects and exploring new economies, biodiversity and offsets. He has run a successful consulting business for the past 10 years, working in areas including Indigenous economic, community and social development, Indigenous land management and cultural heritage, and reviews of government-funded programs. With a Bachelor of Applied Science from Charles Sturt University, Barry is passionate about building community capacity and planning that delivers sustainable social, cultural, and economic outcomes. He also has a real interest in the work community rangers do in looking after land, fire management, and cultural heritage. Barry is the CEO of the North Australian Indigenous Land and Sea Management Alliance.



Suzanne Thompson

Suzanne Thompson was born and raised in Barcaldine. Her custodial connection to Country has been continuous and carries on the work of her father, the late David Thompson, and Great Grandparents David and Clara, all of whom had traditional custodial links to the lands of the Kunngerri/Iningai & Bidjera peoples.

With 20 years of experience in government and community sectors, she has become a pioneer for social and economic empowerment, trade and Indigenous self-determination and is passionate about finding innovative ways to create partnerships between indigenous and non-indigenous cultures. As the Founder and Managing Director of Yambangku Aboriginal Cultural Heritage and Tourism Development Aboriginal Corporation (YACHATDAC) – which manages a 22,000-acre Property in Outback Central Western Queensland – Suzanne is redefining the very idea of social enterprise and appropriate cultural trading methods that will ensure a safe and transparent economic future for Indigenous people. She volunteers her time as the Chair of the Australian Native Foods and Botanicals (ANFAB) National Peak body and is working directly to secure Indigenous interests and right in this rapidly expanding global marketplace. Suzanne is currently fostering support and investment for nature-based economies, including Indigenous Land Management, Carbon Farming and First Foods and Medicines, and the recognition, protection, and remuneration of Indigenous intellectual knowledge by industry. More recently, Suzanne was appointed to the Central Western Queensland Ministerial Round Table for her invaluable insights and connections to Regional Outback Queensland.



Natalie Sommerville

Natalie Sommerville lives and works on Ngadjuri Country in South Australia's Mid North and is a farmer, grazier, business owner, mother and mentor. Nat's connections to Wagadagam clan of Mabuyag of the Torres Strait Islands through her father's side provides her with a cultural lens in all that she does.

Nat with her husband Dane and 2 children manage their farming business Windjara Ag and have been farming in the mid north for almost 20 years, developing strong relationships with the local traditional owners over this time. Driven by her passion for sustainable agriculture, the environment and social justice, Nat's focus is on influencing positive change in rural Australia and seeing greater innovation, inclusion of gender and age, and respect for diverse backgrounds. She is passionate about sharing her farming, cultural and social knowledge and experiences to improve outcomes for both current and future generations. Nat creates time to mentor Aboriginal students in local schools and ensures she volunteers for community and industry boards at local, state and national levels. This includes National Farmers Federation, Australian Women in Agriculture, SA Ag Excellence Alliance, Landcare Australia First Nations Landcare Working Group, and the local NAIDOC committee just to name a few.



Rene Woods

Rene Woods is a Nari Nari man from southwest New South Wales. He has had a long involvement Gayini (water) for Aboriginal people across the Basin. He grew up on the Murrumbidgee River where the river was always central to his family, his community, and their way of life.

Rene is a strong advocate for First Nation people in the Basin and has worked in communities in both the public and non-government organisation sectors of the Basin. He is currently employed by the Nature Conservancy Australia as a Conservation Officer and has seen what can happen for communities that have Gayini and land under their ownership and control. He believes that together we can achieve a strong healthy river system and healthier communities. He works with his Nari Nari Elders to make sure their views are incorporated into Gayini (water) planning within the state and Basin. Rene was the first Aboriginal person appointed to the Murray Darling Basin Authority Board in December 2020.



Doug Humann AM

Doug Humann AM, GAICD, BA (Hons), Dip ED, was appointed chairman of Landcare Australia in 2016.

With more than 40 years involvement in regional Australia, including 30 years leadership experience in the environmental sector, Doug led Bush Heritage Australia (1997–2011) to national prominence before establishing his own consultancy. Doug is primarily engaged with non-government organisations, Indigenous groups and natural resource management/ catchment management authorities. Doug provides advice and support on a range of strategic, investment, project and governance matters, and is particularly involved in building partnerships, collaborations and mentoring.



Image: Landcare Australia's Rob Porter at Drayton Farm in Breeza, NSW



Image: Dr Shane Norrish, Daniel Kahl and Matt Kahl at Wee Waa, NSW



Image: Cotton field at Drayton Farm in Breeza, NSW

COUNTRY ROAD

The Biodiversity Project

Since 2020, Country Road and Landcare Australia have enjoyed a successful partnership focused on supporting producers within the Australian cotton industry to improve areas of biodiversity value on farm. They have managed this with strategically placed native planting projects that improve long term farm health and sustainability.

As part of The Biodiversity Project, Country Road has proudly supported the partnership via a corporate contribution and funds raised through the sale of its iconic Verified Australian Cotton Heritage Sweats, providing over \$800,000 in the first three years.

The Biodiversity Project has supported six regeneration projects on cotton farmlands in New South Wales. Together we are working

with the farming families to undertake weed control, site preparation and planting in riparian areas. The Biodiversity Project's long-term aims are to improve biodiversity and habitat connectivity, support threatened, vulnerable and iconic fauna species while also providing farming co-benefits.

In addition, Landcare Australia was awarded a grant from Country Road's Climate Fund in 2023. This funding was used to engage with producers directly to understand the barriers restricting their participation in carbon and biodiversity improvement market opportunities across the sector.

From these insights, Landcare Australia will be developing a toolkit to assist producers

to understand if the opportunity is suitable for their enterprise and if so, the next steps involved in implementation.

The Landcare activities in The Biodiversity Project and the Country Road Climate Fund aim to address climate change-related concerns, improve biodiversity and help to deliver a healthier, more sustainable and productive agriculture sector.

The Biodiversity Project has been supported with industry insights, connections and support from Cotton Australia and Cotton Research and Development Corporation (CRDC).



Image: Junior Landcare ambassador Costa Georgiadis writing his love letter to the land.



Junior Landcare's 'Love Letters to the Land'

In late 2023, Junior Landcare's 'Love Letters to the Land' campaign received an overwhelming response, with hundreds of letters pouring in from all corners of Australia to mark Junior Landcare's special 25-year anniversary.

Victorian school Saint Joseph's in Werribee emerged as the proud winner of the campaign, having submitted hundreds of letters. Each student poured their heart into expressing their love for the land, accompanied by detailed actions on what they do to take care of it.

As part of the prize, the school received a special surprise visit by Costa in early 2024. During his visit, Costa toured the school with the Environment Captains, engaged with students in a surprise assembly, and participated in planting activities alongside the enthusiastic students. A Channel 9 camera crew visited the school for a live cross for the Today Extra breakfast program.

You can read more about Junior Landcare here: www.juniorlandcare.org.au



Image: Large group of students posing with red heart cutouts.

Image: Our Lady of the Angels students with Loretta Arrastia, Community Programs Manager at Woolworths



Making an Impact with Woolworths for Thousands of Children

Since 2018, the Woolworths and Junior Landcare partnership has provided more than \$6million in grants to Aussie children to get hands-on with nature and care for the environment. Landcare Australia is proud to partner with Woolworths as the retail company celebrates its 100th anniversary.

Through Woolworths' support, the Junior Landcare Grants program has provided children in schools and early learning centers across Australia with opportunities to connect with their local environment, experience the benefits of nature, and engage in environmental projects.

One notable example is Our Lady of the Angels in Kellyville, New South Wales, where 562 students built a vegetable garden. They designed garden beds, grew plants from seeds, harvested and ate the produce. The school also used the 'Creating a Wiggly Worm Farm' activity from the Junior Landcare Learning Centre, supported by Woolworths, to develop a composting worm farm, reducing food waste and producing fertilizer for the garden.

Across the country in Western Australia, East Kenwick Primary School worked to design, install and monitor six nesting boxes for the Red-tailed Black Cockatoo, a local threatened species.

Through the Woolworths Junior Landcare Grants program, students across Australia have learned about sustainability, food origins, and environmental care in their communities.

Our partnership with Woolworths has had the following impact:

Over 6.1 million
in grant funding

5,955
participating schools and early learning centres

454,663
Australian children actively learning about nature

Endangered Coastal Emu Protection Project

Each year, thanks to the ongoing partnership between Landcare Australia and Hawke's Brewing, contributions from Hawke's beer sales have funded numerous environmental projects around the country.

The 2023/2024 Hawke's Landcare Community Grants support the 'Endangered Coastal Emu Protection' project in the Clarence Valley, NSW. This initiative aims to bolster the coastal emu population by building on the work of the Maclean Lions Club Environmental Group and Clarence Valley Landcare. The three-year project focuses on implementing a sustained management program for improved long-term emu breeding and feral animal control.

The coastal emu in NSW is classified as an endangered population under the NSW Threatened Species Conservation Act, with less than 50 coastal emus reported. Increased feral pig control in the Taloumbi/Brooms Head area is crucial to reducing the impacts on the coastal emu's breeding cycle, leading to more successful breeding clutches. Reducing feral pig numbers also has a positive environmental outcome by minimising soil disturbance from ground rooting, benefiting both agricultural properties and conservation areas.

“This is an exciting new project for Clarence Landcare, we get to do what we do best and that is to develop partnerships with organisations and engage the local community to work on ground toward a common goal. In this case, it is for the protection of the endangered coastal emu. We are looking forward to developing our working relationship with Landcare Australia who have engaged us to develop and manage this project.”

Debbie Repschlager, Clarence Landcare Program Manager

Image: Coastal Emu with baby chicks



Image: Gallagher fencing demonstration day



Supporting Conservation and Biodiversity

Now in its fifth year since launching in 2019, the Gallagher and Landcare Australia Electric Fencing Grants continue to provide support to landowners and landcare groups for conservation and biodiversity protection projects aligned with the priority areas of conservation exclusion/inclusion fencing, riparian protection and farm dam restoration on agricultural land.

The partnership with Gallagher helps Landcare Australia to support groups with fencing projects that protect waterways to improve water quality, enhance biodiversity, and support landscape restoration. The landcare projects with Gallagher also help to exclude feral animals and keep livestock away from conservation areas on properties.

Previous 2022 Gallagher Landcare Electric Fencing grant recipient, the Schmidt Family, are active members of their local Kiewa Catchment Landcare Group. They operate a 108-hectare beef cattle farm in North-East Victoria, adjoining Stanley State Forest. Their aim was to install conservation fencing and improve their farm practices by enhancing water quality and ecosystems in farm dams, protecting the Stanley Forest from stock access, and enhancing soil health through strip grazing. Over 14 people were involved in the project across three working bees to install the fencing. Additionally, the group held an on-farm Enhancing Farm Dams Workshop, which was well-attended by the local community and landcare members. The installed fencing has successfully improved on-farm water quality, soil health, biodiversity, and animal health. It provides a line of protection for the neighbouring forest and has reduced the number of unwanted feral animals.

“We are extremely grateful for the opportunity to try the different fencing options. We believe the fences we have constructed have already improved our on-farm water quality, soil health, biodiversity and animal health. They provide a line of protection for the neighbouring forest and have reduced the number of unwanted feral animals.

Jacqui Schmidt, Kiewa Catchment Landcare Group

”

Supporting the Sustainable Development Goals

During FY24 Landcare Australia's projects, partnerships and programs contributed to 12 of the 17 the Sustainable Development Goals - described by the United Nations as "a shared blueprint for peace and prosperity for people and the planet, now and into the future."

Data collection is undertaken across all programs to measure our impact against the goals annually which not only include environmental objectives, but also relate to areas including education, consumption, agriculture and cultural heritage.

1,202 projects were funded across Australia through Landcare Australia's grants programs, bringing companies and community together for positive environmental and social impacts. 779,972 trees and plants were established, supporting habitat regeneration and biodiversity, and 76,384 young people were engaged through our Junior Landcare program, learning about connecting with and caring for our natural environment.



2 – Zero hunger

- Close to 300,000 hectares of farmland were enhanced through Landcare Australia projects and programs, including the Landcare Farming Program's Benchmarking Demonstration Project, the Country Road Biodiversity Project, and Coca-Cola Farm Dam projects.
- Eight webinars were run as part of the Landcare Farming Program Webinar Series, sharing knowledge about a range of topics supporting farmers to gain knowledge and skills that will "strengthen capacity for adaption for climate change" and "improve land and soil quality,"* including simplifying measuring and recording soil and environment data.

*Contributed to target 2.4**



4 – Quality education

- 76,384 students took part in 1,166 Junior Landcare projects, funded through the Woolworths Junior Landcare and Victorian Junior Landcare and Biodiversity Grants programs. The students got their hands dirty planting native plants, sensory and veggie gardens, learnt about biodiversity through education programs, and connected with their local cultural heritage through First Nations perspectives projects.
- 950 people registered for the Junior Landcare webinar on supporting student wellbeing through outdoor learning, providing an engaging and valuable professional development opportunity to educators across the country.

Contributed to targets 4.4 and 4.7



6 – Clean water and sanitation

- 20,635 plants were planted in riparian zones, including 2,335 by corporate volunteers hosted by local groups including Friends of Kororoit Creek in Victoria, Friends of Pledger Wetlands in South Australia, and Oxley Creek Catchment Association, an organisation protecting and enhancing the natural environment of the catchment of Oxley Creek, one of the major tributaries of the Brisbane River.
- The Biodiversity Project, funded by Country Road continued into its fourth year, with Landcare Australia planting 4,000 seedlings along 2.8km of river frontage, and undertaking 43 hectares of weed control.
- In partnership with Fisheries NSW, Local Land Services and OzFish, Landcare Australia supported the improvement of 65 hectares of degraded floodplain, riparian and wetland habitat within the Namoi River Catchment through the Healthy Rivers project. Through funding from the Murray Darling Healthy Rivers Program, the project saw 7,800 seedlings planted across six sites and bank stabilisation works along 2km of river frontage.

Contributed to target 6.6



7 – Ensure access to affordable, reliable, sustainable and modern energy for all

- One project funded as part of the a2 Milk Sustainable Agriculture Landcare Grants will increase the energy efficiency of its dairy operations through storing and utilising excess solar energy, reducing running costs and enhancing farm sustainability.

Contributes to targets 7.2 and 7.3



8 – Decent work and economic growth

- 400 producers and landcarers were involved in biodiversity training through the Landcare Farming Program in partnership with Accounting for Nature. This training provides producers with skill and knowledge in natural capital, and the considerations and opportunities to be aware of. Eight webinars also took place through the Program, offering learning and upskilling opportunities to primary producers across Australia.
- Eight projects were funded through the a2 Milk Sustainable Agriculture Landcare Grants program. This Program supports dairy farmers to enhance the sustainability of their farming operations and achieve positive environmental, animal health and well-being and business outcomes. Initiatives supported include recycling and reusing wastewater, reducing energy use, and soil testing to improve nutrient use.

Contributes to target 8.4



10 – Reduce inequality within and among countries

- Two Corporate Environmental Volunteering events were hosted by IndigiGrow, an organisation employing all First Nations staff and interns. 53 KPMG employees participated in these events, and activities including Indigenous cultural knowledge sharing and maintaining bush food gardens.

Contributed to target 10.2



11 – Sustainable cities and communities

- 281 projects incorporated activities that promoted or conserved traditional knowledge. Gurramay Elders were involved in a community project funded by Hawke's Brewing to protect and enhance local tidal wetlands on the Cassowary Coast in Far North Queensland, sharing knowledge with local scientists and supporting the project design.
- 20 hectares of public green spaces or public parks were enhanced or restored through two projects, including 1,500 plants established by Cardinia Environment Coalition to revegetate Gembrook Park in Victoria, engaging local school students and supporting local fauna.

Contributed to targets 11.4 and 11.7



12 – Responsible consumption and production

- 320 projects funded through grants programs included waste management activities, engaging 25,941 people in collecting 34,232 kg of litter. 15,384 kg of litter was diverted through landfill.
- 318 of these projects were funded through the Woolworths Junior Landcare and Victorian Junior Landcare and Biodiversity Grants programs, engaging young people in learning about responsible waste management, composting and recycling.

Contributed to targets 12.4, 12.5 and 12.6



13 – Climate action

- Through Landcare Australia's partnership with VicTrack, 35 community events, workshops and surveys were undertaken, raising awareness and knowledge of environmental protection and ecological restoration practices and the impact they have on supporting native flora and fauna as they increasingly face climate change associated threats.
- The Coca-Cola Australia Foundation Farm Dam Restoration project has seen the restoration and transformation of three degraded farm dams across South Australia and Victoria. These projects improve drought resilience and help conserve and promote biodiversity by providing critical wetland habitats.

Contributed to targets 13.1 and 13.3



14 – Life below water

- 352 kg of litter was collected from coastal areas through Corporate Environmental Volunteering events, including by 9 volunteers from ING who contributed 45 hours to helping New South Wales group caring for the Tuggerah Lakes, Clean 4 Shore, collect and audit 320 kg.
- A project funded through Landcare Australia's partnership with Reflections Holiday Parks saw 400 square metres of weed control undertaken by Scotts Head Dune Care, a coastal protection group undertaking dune revegetation and rehabilitation on the north coast of New South Wales.

Contributed to targets 14.1 and 14.2



15 – Life on land

- 779,972 trees and plants were established and 785 hectares of weed control undertaken through projects delivered or supported by Landcare Australia, helping to reduce invasive species, restore degraded land, and enhance biodiversity.
- 1,926 nest boxes or artificial habitats were installed as part of projects funded through Landcare Australia's grants programs. These support native wildlife in the face of biodiversity loss, including threatened or vulnerable species. 459 community biodiversity surveys were undertaken by groups and schools to learn more about the biodiversity in their local areas.

Contributed to targets 15.3, 15.5, 15.8 and 15.a



17 – Partnerships for the goals

- Landcare Australia works in numerous multi-stakeholder partnerships on initiatives that support the achievements of the Sustainable Development Goals. Stakeholders include more than 20 Australia businesses, Federal, state and local governments, and Landcare organisations.
- 4,312 volunteer hours were contributed to 52 community landcare events and projects by 902 volunteers from 14 companies through Landcare Australia's Corporate Environmental Volunteering program. Together they had a significant impact, planting 7,800 and propagating 18,381 seedlings, and collecting close to 1,000 kg of litter.

Contributed to target 17.16



Image: Landcare volunteers working on the Hunter Valley NSW wetlands project

Our Government Partnerships

Landcare Australia has worked collaboratively with federal, state and local governments and their agencies for 35 years to support the landcare community with activities that:

- support the sharing of knowledge and promote the development of community leadership and resilience
- recognise and celebrate the achievements of the landcare community
- encourage participation in landcare activities and the recruitment and retention of volunteers
- attract government, corporate and philanthropic funding and in-kind support for good quality, hands on projects and programs that will improve environmental and community wellbeing outcomes
- support the adoption of sustainable agriculture practices that will deliver a more productive and profitable agriculture industry.



Australian Government

Commonwealth Government

Landcare Australia has had a long-standing partnership with the Australian Government for over 35 years and together we have achieved so much for the landcare movement.

We are continuing our great work together by delivering on activities through the Natural Heritage Trust. This noteworthy accomplishment highlights the impactful work of Landcare Australia and underscores our proven capability since 1989. With this continued support we are well positioned to further our mission to support the landcare movement.

We will continue to deliver impactful programs such as the National Landcare Conference, the Landcare Awards, the NextGen Symposium, First Nations Landcare, Landcare Agriculture, and enhanced communications campaigns aimed at fostering nationwide engagement and environmental stewardship.

The funding will support Landcare Australia deliver outstanding programs on behalf of the Australian Government and achieve positive outcomes for the landcare movement, our environment, vital agricultural lands and communities nationwide.

Our project activities will deliver programs that address climate-smart, sustainable agriculture, environmental protection and natural resource management outcomes through mobilising and supporting local landcare groups, farmers, landholders, First Nations groups and communities.

The Commonwealth is represented by the Department of Agriculture, Fisheries and Forestry (DAFF) and the Department of Climate Change, Energy, the Environment and Water (DCCEEW).



Victorian Government Department of Energy, Environment and Climate Action

Landcare Australia and the Victorian Government's Department of Energy, Environment and Climate Action (DEECA) have partnered for many years to support the landcare movement in Victoria.

The Victorian Junior Landcare and Biodiversity Grants are funded by DEECA through this partnership, and since 2018 have provided \$2.54 million in funding to more than 690 projects across Victoria. The projects engage young Victorians in learning about and caring for Victoria's biodiversity. They include planting indigenous vegetation to create habitat for Victoria's native animals, enabling students to participate in citizen science activities to collect data about the natural environment and educating young people about biodiversity in their local area. The grants support the Victorian Government's *Biodiversity 2037* plan, and contribute to a number of its goals.

Funding was also provided in 2023-2024 by DEECA to Landcare Australia to leverage corporate and other non-government funding to support Landcare projects in Victoria.

Our Corporate Partnerships



4 Pines

4 Pines Beer and Landcare Australia will plant 44,444 trees, shrubs, and groundcovers near Inverell, in northern NSW. Through their partnership with the Manly-Warringah Sea Eagles, 4 Pines will plant four trees for every try scored by the Sea Eagles during the 2023 and 2024 NRL Premiership seasons.

Since 2020, our collaboration has also supported sustainable agriculture and climate adaption resilience within their supply chain at Ryefield Hops and in addition, planted 44,444 trees, shrubs, and groundcover at Cape Jervis, SA.

The ecological co-benefits of the plantings include improved biodiversity, landscape connectivity, soil health, rehydration of cleared landscape and provision of long-term habitat for threatened species, including the Glossy Black Cockatoo.



Abergeldie Complex Infrastructure and Jaramas Foundation

The Jaramas Foundation has been a partner of Landcare Australia since 2012, and has funded more than 25 on-ground Landcare projects in rural New South Wales.

In 2024, Abergeldie Complex Infrastructure and the Jaramas Foundation co-funded a project to improve biodiversity in the riparian zone of the Wambuul Macquarie River in Dubbo, New South Wales.

This project was undertaken as a partnership between Landcare Australia and Dubbo River Care Group, with in-kind support and being provided by Taronga Western Plains Zoo. Fifteen hectares of the riparian zone is being revegetated with native species to increase habitat, minimise erosion and support fish habitat.

Abergeldie Complex Infrastructure team members supported the project by coming on site and helping plant 1,000 native plants.



a2 Milk

The a2 Milk® Company's 2024 Farm Sustainability Fund was delivered in partnership with Landcare Australia, investing \$250,000 in funding to eight dairy farmers in New South Wales, Victoria and Western Australia. Each of the projects support supply chain partner initiatives to enhance animal health and well-being and environmental sustainability, with the aim to achieve positive business outcomes. These include improved water quality, enhanced productivity, better soil health and reduced energy use.

Since its inception in 2017, the partnership between Landcare Australia and The a2 Milk® Company has provided more than \$1.1 million in funding for sustainability initiatives, with positive outcomes for dairy farms supplying a2 Milk®.



AusNet

Launched on World Environment Day 2024 with a corporate volunteering event at Westgate Park, Melbourne, the three-year partnership between AusNet and Landcare Australia is based on a shared commitment to environmental sustainability and community engagement.

This year we announced our inaugural AusNet Community Landcare Grants, with the Phillip Island Landcare Group and the Gecko Clan Landcare Network each being awarded \$20,000 annual funding, for the next three years to support local conservation activities. The Phillip Island Landcare group received funding to protect, promote and provide opportunities for community revegetation. In partnership with Bass Coast Shire Council, the group will enhance endangered vegetation in the public Phillip Island recreation reserve. Meanwhile, the Gecko Clan Landcare Network will address habitat loss caused by recent severe weather events, by coordinating the supply of 6000 indigenous plants, 200 paddock tree guards and 100 nest boxes to local landcare groups.



Banrock Station

Since 2021, Banrock Station has partnered with Landcare Australia to plant 100,000 native trees and shrubs each year.

Planting projects are designed to help increase landscape connectivity while supporting a number of endangered or vulnerable plant and animal species.

An Accolade Wines brand, Banrock Station is committed to the environment. Over the last 20 years the brand has contributed \$7.5 million to over 130 projects, including the care and maintenance of over 1,000 hectares at its South Australian based Ramsar Wetland of International Importance.



CHEP

CHEP Australia entered into a partnership with Landcare Australia in 2019 to deliver strategic projects which align with its sustainability goals of delivering environmental and regional community benefits, while also creating value for CHEP's supply chain partners.

In 2024, the partnership saw 70 CHEP employees join local communities on bush regeneration activities through Landcare Australia's Corporate Environmental Volunteering Program.

Additionally, in May 2024, 30 fortunate staff were able to enjoy a unique experience to support habitat regeneration in fire-affected Kangaroo Valley, and at a riparian planting at Bundanon on the Shoalhaven River in NSW.

CHEP is part of Brambles, an ASX-listed global supply chain solutions company.



Coca Cola Australia

2023 saw the continuation of the Coca-Cola Australia Foundation Farm Dam Restoration project.

This is now at the mid-point of a three-year project, which has seen the restoration and transformation of three degraded farm dams across South Australia and Victoria. The projects help both conserve and promote biodiversity by providing critical wetland habitats for native wildlife.

In this final year, site locations have been sourced and preparation is underway for four sites in New South Wales.

Through field-days in each state, the Coca-Australia Foundation Farm Dam Restoration Project will also facilitate knowledge sharing across a broad cross-section of the farming community, demonstrating and encouraging sustainable and innovative farm dam enhancement activities.



Country Road

The partnership between Country Road and Landcare Australia has supported six regeneration projects on cotton farmlands in New South Wales. Together, we are working with the farming families to undertake weed control, site preparation and planting in riparian areas. The Biodiversity Project's long-term aims are to improve biodiversity and habitat connectivity, support threatened, vulnerable and iconic fauna species while also providing farming co-benefits.

As part of The Biodiversity Project, Country Road has proudly supported the partnership via a corporate contribution and funds raised through the sale of its iconic Verified Australian Cotton Heritage Sweats, providing over \$800,000 in the first three years.

In addition, Landcare Australia was awarded a grant from the Country Road Climate Fund in 2023. The grant is supporting the development of a toolkit to help wool and cotton growers understand the potential benefits of planting native vegetation on their properties, to sequester carbon and enhance biodiversity. The outcomes will be shared nationally via Landcare Australia's network to encourage participation in carbon sequestration projects.



Gallagher

The 2023 Gallagher Landcare Electric Fencing Grants supported 21 projects to improve protection of riparian areas and farm dams, and protection of high value remnant vegetation and habitat for native species through installation of electric fencing to reduce access to these sensitive sites by pests, browsing animals, and livestock. Projects were delivered by Landcare groups and environmental professionals, agriculturalists, and private land managers.

In Mary River, QLD, fencing enabled landholders to plant out native seedlings to stabilise the riverbank, reducing erosion and sediment runoff into the river, enhancing water quality.

In South Australia, a revegetation project in a degraded high value Fleurie swamp has improved biodiversity, habitat and water quality.

The Murrumbidgee River flats in North Eastern Victoria had fencing installed to protect and provide habitat for wetland birds and animals, including platypus, by creating vital links between existing revegetation zones and restricting livestock access.



Greyhound Australia

Greyhound Australia is a leading transport organisation that advocates coach travel as the most environmentally friendly long-distance travel option. Greyhound is committed to protecting the environment and minimising impact on the areas in which they operate.

In collaboration with Landcare Australia, Greyhound contributes to the Tree Planting Pool, offering customers an opportunity to co-contribute when purchasing tickets.

Greyhound aims to increase the breadth of this partnership, developing a biodiversity program to support endangered species and leave a lasting environmental legacy.

Greyhound was the proud sponsor of the Coastcare Award as part of the 2023/2024 State & Territory Landcare Awards.



Hawke's Brewing

In 2017, Landcare Australia partnered with Hawke's Brewing Co., an independent, Australian-owned beer company, co-founded with former Australian Prime Minister the late Bob Hawke. Hawke's raises money for and contributes a portion of proceeds to Landcare Australia, which was one of Bob's conditions for being involved.

This year marked the beginning of a three-year project, Endangered Coastal Emu Protection Project in Clarence Valley, aimed at establishing a sustainable management program for long-term breeding and protection. The project builds on Clarence Valley Landcare and Maclean Lions Club Environmental Groups' previous efforts in raising community awareness and taking direct action to protect the endangered species.



KPMG

In April 2024, 357 KPMG employees participated at 14 Landcare Australia Corporate Environmental Volunteering events across five states.

The volunteering day was part of KPMG Australia's commitment to create a fairer, more inclusive and more sustainable future for our communities.

At the events, corporate volunteers learnt about First Nations culture, tended to bush food gardens, propagated native plants from seed, and planted native seedlings. They also removed invasive weeds from urban bushland and parks, cleaned litter from waterways and coastlines. The CEV participants analysed data, monitored water quality in urban creeks, and removed tree guards and wire from agricultural properties.



Manheim

Manheim Australia, through the support of Cox Automotive's global sustainability program 'Cox Conserves', partnered with Landcare Australia for three impactful projects, and participated in corporate volunteering events, connecting team members to local community projects near their operational facilities.

Notable outcomes from the three headline projects include planting 4,000 native plants along the Kororoit Creek Trail in western Melbourne, creating habitat, increasing biodiversity, and preventing riverbank erosion with the long-term goal to improve water quality and see a return of platypus to the creek. This was in addition to the establishment of a 'bug hotel' carved artistic installation along the creek and walking path.

Landcare Tasmania commenced critical habitat restoration close to Franklin-Gordon Wild Rivers National Park, engaging university students and developing community partnerships to support supporting threatened species and ecosystem repair.

In South Australia, native wildlife corridors are being established close to Ettrick Conservation Park, SA. 17,000 plants will be supporting the corridor, creating vital habitat to support the endangered species Mallee fowl and Black-eared Miner.



NBN

Since 2019, NBN Co. has partnered with Landcare Australia for the purpose of supporting Australian producers to be more resilient in the face of a changing climate. This is achieved by showcasing innovative farming and environmental management practices which utilise the NBN® network and sharing the outcomes across national farming networks.

In 2023, a remote monitoring project was developed on a property in south-west Western Australia to identify invasive vertebrates, aiming to understand the scale of the issue and undertake appropriate management.

NBN Co. employees also worked together with community Landcare groups in Victoria, New South Wales and Queensland, weeding, planting and mulching revegetation areas as part of Landcare Australia's Corporate Environmental Volunteer Program.



Reflections

Reflections Holidays is a Crown Land Manager that manages 40 holiday parks, unique properties and camping grounds across NSW, and cares for 45 nature reserves in spectacular coastal and inland locations. Reflections is the only holiday park group in Australia that is a certified social enterprise, and it reinvests profits back into its holiday parks and reserves and strives to protect what's important to all of us, so it can be enjoyed for many years to come.

Reflections partnered with Coastcare to help coastal communities create a positive impact and look after the patches of nature we all share.

In May 2024, the team at Reflections Scotts Head supported their local Coastcare group via a grant program. This will assist the group to maintain the pristine environment in this unique location.



Steadfast

Steadfast Group and Landcare Australia announced their second partnership, providing funding to support the Bangerang Aboriginal Corporation's Itjumatj Woka Healthy Country Project.

The funding will support the development, planning and conducting of two cultural burn workshops and COVRAM app training for rangers, landcare members, in native vegetation condition assessment and monitoring.

This project builds the capacity of the Bangerang Aboriginal Corporation to create employment opportunities for the First Nations people in Caring for Country.



Syngenta

Landcare Australia and Syngenta's partnership began in 2021 to improve the management of biodiversity in agriculture.

In South Australia, two projects were implemented to improve biodiversity in agricultural landscapes. A direct seeding project which will reduce soil erosion across 1,000 hectares of cropping land was undertaken on the Eyre Peninsula. In addition, 20,000 local native plants were planted across 13 hectares, restoring habitat and creating linkage between Monarto Conservation Park and Ferries McDonald Conservation Park.

This year, Landcare Australia and Syngenta have been focusing on developing a Biodiversity in Agricultural Landscapes Toolkit to assist land managers, due for release in FY25.



Transurban

Transurban-Landcare Australia's partnership is enhancing environmental and community outcomes along Transurban's roads.

Landcare Australia maintains and monitors the M2 Macquarie Park Motorscapes site in Sydney. This major bush regeneration and water quality improvement project saw the five-hectare site cleared of invasive weeds and planted with locally indigenous plants, providing new areas of habitat for wildlife adjacent to Lane Cove River.

Landcare Australia's Corporate Environmental Volunteering Program is a key component of the partnership, providing opportunities for Transurban employees to work alongside community groups and volunteers. Staff restored natural ecosystems through propagating and planting native seedlings, removing weeds and rubbish from coastal ecosystems and contributing to the Healthier Waterways litter strategy.



VicTrack

VicTrack's partnership with Landcare Australia supports local Landcare organisations across Victoria to achieve significant environmental and community outcomes by providing funding to protect and enhance native vegetation areas on railway and related land.

In 2023-24, VicTrack funded four projects, The Great Victorian Rail Trail (Upper Goulburn Landcare Network), Hidden Valley Rail Reserve (Wallan Environment Group), Restoring Bellarine Railway Biodiversity (Bellarine Landcare Group) and Whittlesea and Surrounds Blackberry Action Group.

Across the projects 1,600 plants were established, 178 hectares of weed control undertaken, enhancing biodiversity conservation and habitat quality.

Through 35 local community events, 332 volunteers contributed over 1000 hours, helping to manage and preserve the natural heritage of the sites.



WIRES

The WIRES and Landcare Australia partnership supports the Wildseek Project: Community Wildlife Intelligence Hubs, taking the first step toward building a national conservation AI network.

Partners are providing over \$1,500,000 in funding to support the project, with a significant contribution made by WIRES.

Along with the Queensland University of Technology (QUT), the Wildseek Project is establishing and supporting an initial network of five Community Hubs for the conservation and rescue response of native species, particularly the Koala. All Hubs are now commercially licensed drone organisations, and commencing surveys.

Recent results from East Gippsland Conservation Management Network include 42 confirmed koalas from 264 ha of survey across two sites. Landcare Australia, working together with Science for Wildlife and local Landcare and environmental groups have identified 32 koalas in three surveys, covering 287 hectares.

Noosa and District Landcare, Tamworth Regional Landcare Association, and Mid Coast 2 Tops Landcare Networks are now all registered Drone operators with CASA, they have all commenced surveys, with further results expected soon.

While the Project's initial focus is on identifying koalas, it has the potential to expand the program to include multiple species including kangaroos, wallabies, and wombats.



Woolworths

Since 2018 Woolworths has been the major supporter of Landcare Australia's Junior Landcare program.

This partnership has now funded close to 6,000 projects, with more than \$6 million in grant funding, through the Woolworths Junior Landcare Grants program. In FY24 a total of 1,041 projects were awarded grants of up to \$1,000 each that are set to engage 100,000 children in hands-on environmental and sustainable projects in schools and early learning centres.

The Junior Landcare Learning Centre, an online library of free curriculum-linked educational resources is also supported by Woolworths, attracting more than 4,000 monthly visitors.

The 2024 State & Territory Landcare Awards included the Woolworths Junior Landcare Team Award, celebrating and promoting participation in landcare amongst young people.

Image: Landcare volunteers in Sydney



In-Kind Supporters

Landcare Australia is grateful for the in-kind support from professional services organisations and corporate partners who help us support the landcare movement. In the last financial year, they include:



Norton Rose Fullbright provide valued in-kind legal support.



HERBERT
SMITH
FREEHILLS

Herbert Smith Freehills provide valued in-kind legal support.



KONICA MINOLTA

Konica Minolta provides valued copier/scanner equipment and printing services.



Landcare Australia Governance

- ▶ Consolidated Statement of Profit & Loss
- ▶ Consolitated Statement of Financial Position
- ▶ Consolitated Statement of Cash Flows
- ▶ Financial Overview

Landcare Australia Board of Directors

Board Attendance

Doug Humann AM, Chair	6/6
James Walker	5/6
Anna Hooper	6/6
Naomi Edwards.....	6/6
Rebecca Underwood	4/6
Robert Purves AM (appointed 1 March 2024).....	1/6
Brendan Foran (appointed 1 March 2024).....	2/6
Peter Sutherland (resigned 16 December 2023).....	3/6
Robert Nicholson (resigned 1 May 2023).....	5/6
Ricky Archer (resigned 28 November 2023).....	2/6

Finance, Risk and Audit Committee

Members of Landcare Australia’s Finance, Risk and Audit Committee during the 12 months to 30 June 2024 were: Anna Hooper, Committee Chair, Robert Nicholson, James Walker, Neal Hawkins and Brendan Foran

Anna Hooper	6/6
James Walker	2/6
Brendan Foran	1/6
Robert Nicholson.....	5/6

Partnerships, Marketing, Communications and Fundraising Committee

Members of Landcare Australia’s Partnerships, Marketing, Communications and Fundraising Committee during the 12 months to 30 June 2024 were: Peter Sutherland, Committee Chair, Naomi Edwards, Rebecca Underwood, Clare Bailey, James Walker and Robert Purves AM.

Naomi Edwards.....	6/6
James Walker.....	2/6
Rebecca Underwood	3/6
Robert Purves AM	1/6
Peter Sutherland	3/6

Governance and Remuneration Committee

Members of Landcare Australia’s Governance and Remuneration Committee during the 12 months to 30 June 2024 were: Doug Humann AM, Committee Chair, Anna Hooper and Rebecca Underwood.

Doug Humann AM, Chair	3/4
Anna Hooper	4/4
Rebecca Underwood.....	2/4

Company Secretary

The company secretary of Landcare Australia Limited is responsible for the legal and statutory compliance on behalf of the board. The company secretary as at 30 June 2024 is Janet Davison.

Auditors

The auditors for Landcare Australia Limited are Ernst & Young.



Statement of profit or loss and other comprehensive income

FOR THE YEAR ENDED 30 JUNE 2024	2024 (\$)	2023 (\$)
Revenue	7,133,762	9,507,882
Other revenue	19,133	23,125
Finance income	377,525	176,794
Total revenue	7,530,420	9,707,801
Partnerships, fundraising and grants management	(5,219,590)	(6,684,339)
Landcare services project delivery	(1,505,172)	(1,302,304)
Community engagement and awareness	(939,524)	(1,409,331)
Organisational support	(656,655)	(584,028)
Finance costs	(5,377)	(10,075)
(Deficit) before income tax		(282,276)
Income tax expense	-	-
(Deficit) for the year	(795,898)	(282,276)
Other comprehensive income	-	-
Total comprehensive (deficit) for the year	(795,898)	(282,276)

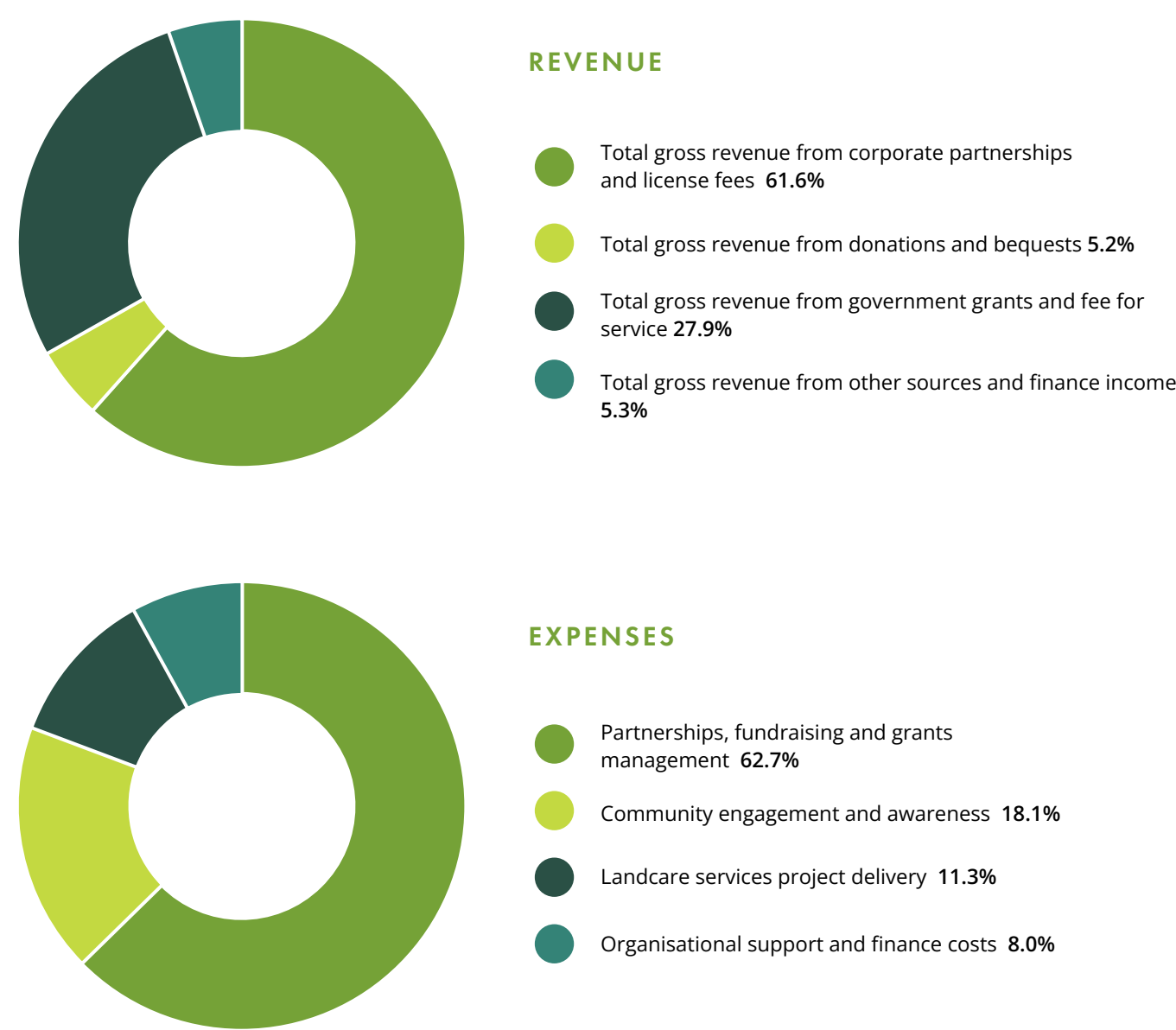
Statement of financial position as at 30 June 2024

ASSETS	2024 (\$)	2023 (\$)
Currents assets		
Cash and cash equivalent	9,905,313	10,580,459
Trade and other receivables	314,152	485,228
Total current assets	10,219,465	11,065,687
Non-current assets		
Property, plant and equipment	82,028	66,358
Right-of-use assets	59,725	183,423
Total non-current assets	141,753	249,781
Total assets	10,361,218	11,315,468
LIABILITIES		
Current liabilities		
Trade and other payables	693,285	922,306
Contract liabilities	3,045,466	2,856,528
Employee benefit liabilities	406,328	384,725
Lease liabilities	76,721	139,872
Total current liabilities	4,221,800	4,303,431
Non-current liabilities		
Employee benefit liabilities	-	-
Lease liabilities	-	76,721
Total non-current liabilities	-	76,721
Total liabilities	4,221,800	4,380,152
Net assets	6,139,418	6,935,316
Equity		
Retained earnings	6,139,418	6,935,316
Total equity	6,139,418	6,935,316

Statement of cash flows

FOR THE YEAR ENDED 30 JUNE 2024	2024 (\$)	2023 (\$)
Operating activities		
Receipts from customers	7,512,909	9,647,681
Payments to suppliers and employees	(8,374,919)	(10,736,520)
Interest received	377,525	176,794
Interest paid	(5,377)	(10,075)
Net cash flows used in operating activities	(489,862)	(922,120)
Investing activities		
Proceeds from sale of property, plant and equipment	-	15,000
Purchase of property, plants and equipment	(45,412)	(70,612)
Net cash flow used in investing activities	(45,412)	(55,612)
Financing activities		
Payment of principal portion of lease liabilities	(139,872)	(139,872)
Net cash flows from financing activities	(139,872)	(139,872)
Net (decrease)/increase in cash and cash equivalents	(675,146)	(1,117,604)
Cash and cash equivalents at July 1	10,580,549	11,698,063
Cash and cash equivalents at 30 June	9,905,313	10,580,459

Financial overview



Pages 64-67 are a summary extracted from the audited General purpose (SDS) financial report for Landcare Australia Limited for the year ended 30 June 2024. This summary information should be read in conjunction with the full financial report, a copy of which can be found at www.landcareaustralia.org.au



Landcare
Australia

© Copyright Landcare Australia Limited 2023 ABN 63 008 656 513

This work is copyright Landcare Australia. It may be reproduced in whole or in part for study and training purposes subject to the inclusion of an acknowledgement of the source, but not for commercial sale or use. Reproduction for purposes other than those listed above requires written permission from Landcare Australia.