



Bupa Landcare Grants Program



Bupa Healthy Cities Landcare Projects

To celebrate Bupa's 'Healthy Cities Challenge' in September, Landcare Australia and Bupa have partnered to support the Bupa Healthy Cities Landcare Projects. Together, through the projects, we will support community groups and organisations to establish 75,000 native plants (trees, shrubs and groundcovers) across Australia in urban and peri-urban landscapes to support positive health outcomes for people and the planet.

Planting sites

The Bupa Healthy Cities Landcare project planting sites must be:

- in an [eligible urban or peri-urban region](#);
- within natural open space areas accessible to the community (e.g. parks and reserves);
- within 300m of an urban home, or easily accessible by public transport; and
- in a location suitable for recreational physical activity such as walking and cycling.

Project Funding Available

Project applications should be for a minimum of **\$5,000** to a maximum of **\$25,000 (ex-GST)**.

Please note: If a group has a particularly good project that requires more than \$25,000 funding and can be established by July 2025, please call Landcare Australia to discuss the proposal.

Key Dates

Applications open	Monday 2 nd September 2024
Applications close	Monday 30 th September 2024, 5pm AEST
Successful applicants notified	By Friday 15 th November 2024
Final report due and project complete	Wednesday 31st July 2025

Enquiries

If you have any questions after reading these guidelines, please call 1800 151 105, or email: grants@landcareaustralia.com.au.

Eligible Regions

[CLICK HERE](#) for a map of eligible urban and peri-urban regions across Australia.

Project Outcomes

Projects will improve the extent, condition and connectivity of native vegetation in urban and peri-urban areas by planting tree, shrub and groundcover species of the appropriate vegetation communities for the site.

Project revegetation activities will contribute to one or more of the following:

- reconnect areas of important natural habitat in the urban and peri-urban landscape;
- encourage greater community participation in landcare and outdoor recreation activities;
- support listed Threatened Species and Threatened Ecological Communities;
- revegetate and widen wildlife corridors;
- improve the amenity and liveability of cities/towns by creating urban forests; and
- contribute to the health and wellbeing of local community members.

Participating groups should engage local community volunteers, which can include Scouts/Guides, schools, and other community groups, to help deliver the on-ground revegetation activities.



Bupa Landcare Grants Program



Project Establishment

All early-stage maintenance and Project planting must be completed by July 2025.

Landcare Australia is able to provide advisory support to potential applicants requesting assistance to ensure their project achieves the desired project outcomes.

Ongoing Maintenance

Each Project will need to undertake adequate maintenance (particularly weed and pest control) to support the establishment of their target number of native plants. Successful groups will also need to plant sufficient trees, shrubs and groundcovers to account for anticipated mortality rates. Some in-fill planting can be implemented within the first 12 months to ensure the Project maintains the agreed number of plants to sustain the environmental benefits.

Capacity to Maintain Site

Sites for eligible projects will not be located on:

- land zoned for future development;
- an easement, or easements, that are likely to be excavated by utilities; or
- land where future disturbance is reasonably foreseeable.

Successful recipients, or their partners, such as council staff or parks rangers, will have the means and capacity to maintain the site after the Project ends, including performing any ongoing maintenance.

Eligible organisations must:

- be an incorporated association if a community volunteer group, network or organisation; or
- an unincorporated association that has an auspice agreement with an eligible organisation, including local government, Landcare Networks, state and nationally based organisations;
- have an Australian Business Number (ABN);
- have an account with an Australian financial institution; and
- hold a Certificate of Currency for appropriate insurance, including public liability and personal accident (volunteer) insurance.

Eligible organisations include:

- Landcare groups and networks and other community-led environmental groups (e.g. 'Friends-of', Coastcare, WildCare, Dunecare, Bushcare, Intrepid Landcare, etc).
- Local government.
- NRM organisations or not for profits – including those operating nationally.
- Traditional Owners and First Nations organisations.
- State and Territory Landcare Organisations.

Ineligible organisations

The following organisations are ineligible to apply, however they can participate as co-contributors for applications:

- Commonwealth statutory authorities.
- State or Territory Governments.
- Schools, Scouting groups, Junior Landcare or Youth environmental groups.

Note: Ineligible organisations above are strongly encouraged to work as supporting co-contributors for applications with a local group. [CLICK HERE to find your nearest group.](#)



Bupa Landcare Grants Program



Eligible Activities

What we will fund	What we do not fund
<ul style="list-style-type: none"> • Projects must focus on planting native trees, shrubs and groundcovers that are endemic to the local area. • Native plant stock in tubes or hiko's. • Community events that engage people in planting activities and raise awareness of environmental conservation and benefits of the project. • Site preparation activities (soil preparation, weed management, mulch, etc.). • Plant guards and stakes • Supplementary watering, weeding, etc. 	<ul style="list-style-type: none"> • Computers, laptops, and smartphones. • Capital expenditure items. • Mature native plants. • Airfares, interstate, or overseas travel. • Project costs and activities that are funded through another grant or fund source. • Retrospective funding of activities or project costs that have been completed before the funding agreement for this grant was signed. • Purchase of goods for competitions, prizes, giveaways, or vouchers, donations. • Events and activities outside of urban and peri-urban areas - as defined in these guidelines.

The above lists are not exhaustive. If unsure, contact the Landcare Australia Grants Team on 1800 151 105 or email: grants@landcareaustralia.com.au.

Other conditions

- Projects must be delivered on land easily and freely accessible to the public.
- All projects must have landholder consent.
- Applicants are encouraged to engage with Traditional Owners and First Nations organisations in project development and delivery.
- Project sites that enable accessibility for all members of the community including wheelchair and mobility aid access are desirable.
- Groups with project reports overdue from previous Landcare Australia grants are ineligible for further funding, until all reporting requirements have been met (contact Landcare Australia if you are unsure).
- Photos of volunteers engaging in on-ground works or activities that showcase your organisation's ability to deliver the project are welcome as part of your submission.

Working with Children

Due to the likely inclusion of children in planting activities, recipients must ensure they engage in suitable checks and risk management protocols as required under relevant legislation.

Reporting Requirements

As a condition of receiving the project funding you will be required to complete a Progress Report and a Final Report.

Funding

Funding will be provided in two (2) instalments – 80% of project funds upon project acceptance and 20% of funds upon completion of the final report. If groups are experiencing hardship or anticipate needing funds earlier, they are encouraged to contact the Landcare Australia Grants Team for support: 1800 151 105, or email: grants@landcareaustralia.com.au.

Terms and Conditions

The funding for this grant will be administered by Landcare Australia. Before receiving funding, you will be required to agree to the [standard terms and conditions](#).

Mapping your project site


Project site mapping is required as part of your project application. This can be provided in one of the following formats:

- PDF
- JPG

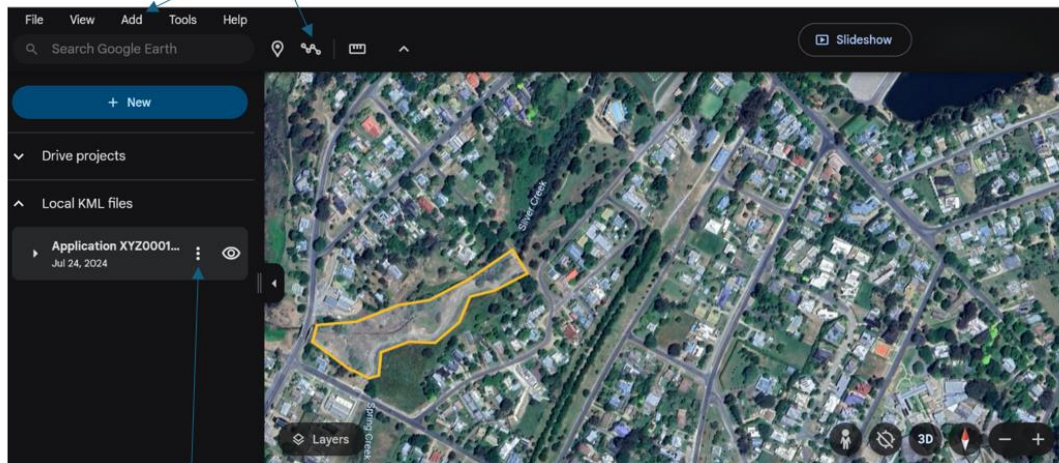
Shape files, KML or KMZ files cannot be uploaded to the application form, however if successful these files will be required. Google Earth can be used to create the mapping information.

File creation using Google Earth

<https://earth.google.com/web>

- Locate your project area on Google Earth
- Click on 'Add' - and select polygon or select the  icon to add a polygon.
- Click points on the map to define your project area.
- Select 'Save to project'.
- Save your project to either Local KML File or Drive Project.
- Rename your polygon with the site identification number/name used in your project application.
- Repeat the above process for each project site identified in your project application.
- Rename your project KML file using your application number.
- Click on Print and change page format to Landscape.
- Select 'Save as PDF'.
- Attach PDF file to your application in Smarty Grants.

Use 'Add' or the icon to add a polygon to your project



Select these dots to rename your project using your application number

If you need any further mapping support, please contact the Landcare Australia Grants Team: grants@landcareaustralia.com.au.



Bupa Landcare Grants Program



Assessment Criteria

Landcare Australia will consider applications based on the following criteria:

Essential Criteria	Weighting	Explanation
The project objective, activities, outcomes and timelines are clearly defined.	30%	<ul style="list-style-type: none"> - Project goals are SMART (specific, measurable, attainable, realistic and timely). - It is clear who will undertake the work, what will be undertaken, and where it will be done. - The project has significant community participation in project activities and the ability for significant community benefit following the project's implementation. - Project benefits are likely to be achieved in the time and budget available.
The project is well developed, has a strong technical basis, appropriately supported and resourced.	30%	<ul style="list-style-type: none"> - The project and activities are feasible with a sound technical basis and a strong probability of success. (i.e. Species list matches vegetation community, Landholder permission is provided) - There is adequate technical expertise to support the project. - The project engages with and benefits the wider community. - The applicant group can provide example(s) of success with similar projects.
There is a commitment to monitor and maintain project outcomes	20%	<ul style="list-style-type: none"> - Monitoring activities are in place to track project progress and assess effectiveness of project activities. - The application demonstrates a commitment to maintain or build on project outcomes into the future. (e.g. Council Letter of Support includes maintenance).
The project demonstrates value for money.	20%	<ul style="list-style-type: none"> - Clear description of the number of plants to be established with the requested funding. - Adequate detail is provided in the budget to show consideration of project planning and costs, and how the target plant numbers will be achieved. - The budget is relevant and aligns with the project activities. - The budget costs and activities align with the expected project outcomes.

Projects will be objectively assessed by a panel against the Assessment Criteria, and the higher scoring projects will be funded.



Bupa Landcare Grants Program



How to Apply

Groups can apply for the Bupa Healthy Cities Landcare Project on the [Landcare Australia SmartyGrants Portal](#) until 5pm (AEST) 30th September 2024

Your application

1. Follow the link <https://landcareaustralia.smartygrants.com.au/bupa24>. You can view and download the application form before you start your application.
2. You must log in or register with SmartyGrants to be able to complete the application.
3. If you wish to save a partially completed application, press '**Save and Close**' and log out. You can log back in and continue to edit your application until you are ready to submit.
4. To submit your application, click the '**Review and Submit**' button at the bottom of the Navigation Panel. You need to review your application before you can submit it. Once you have submitted your application the application's status will change to 'Form completed', and no further editing of the application or uploading of support materials will be possible.
5. When your application has been successfully submitted, you will receive a confirmation email from SmartyGrants to your login email address. Please ensure you check your spam/junk mail folder if you do not receive the confirmation email.

If you have any problems or questions about online submissions, please refer to the FAQs below, or contact Landcare Australia's Grants Team on grants@landcareaustralia.com.au.



Bupa Landcare Grants Program



Frequently Asked Questions

Is my project site eligible?

Use the interactive map to search for your location to check if it is an eligible urban and peri-urban regions. [CLICK HERE](#) for the map.

How many plants should my project target?

Projects should involve a minimum of 500 locally indigenous plants which are appropriate for the site, with total numbers consistent with value-for-money considerations.

How do I know how many participants my project will have?

You should base expected participation numbers on the number of attendees your group has had at similar events in the past.

What do I do if I can't find an auspice for my unincorporated group?

If you are not able to be auspicied by any of the other eligible organisation types including local government, Landcare Networks, state and nationally based organisations contact Landcare Australia and we can assist you with auspicing for your project.

Does my group need an ABN to receive a grant?

Yes, however if your group does not have an ABN, you can arrange for an affiliated group with an ABN (e.g. local council) to receive the grant funds on your behalf.

Does the grant include GST?

Yes, however not all groups are eligible to receive GST. Check whether your group is eligible to receive GST by searching [here](#). Independent advice should be sought if you are unsure. Please ensure your budget does not exceed the total grant funding stipulated in the guidelines. Funds will be transferred to the applicant's nominated bank account if deemed successful.

What do I need to include in my budget?

For each item, include a short description and provide details of calculations used to arrive at the amount budgeted. Inflated budgets will damage the credibility of the proposal.

Filling in your budget table:

In the '**Activity/Item Description**' column, list the resources, funds and activities required to carry out the project.

'**Funding Requested**', enter the price of the items to be funded. Please note – total funding requested must not exceed the total amount of the grant (ex GST).



Bupa Landcare Grants Program



About Bupa

Bupa Asia Pacific is part of the Bupa Group, an international healthcare company. They are committed to reinvesting profits into providing high quality, innovative healthcare for the benefit of current and future customers around the world. Bupa is committed to helping customers live longer, healthier, happier lives and making a better world. To help people live longer, they are focused on preventative health through collaborating with experts and communities to deliver meaningful programs and outcomes.

Bupa Healthy Cities is a global initiative designed to empower people to adopt healthy, long-term habits in their everyday lives, while unlocking investment in nature. Through Bupa's 'Healthy Cities Challenge' in September, Bupa employees and corporate partners across Australia and New Zealand will be asked to complete activities and challenges to unlock Bupa investment into nature regeneration.

For more information please visit bupa.com.au.

About Landcare Australia

Landcare Australia is a national not-for-profit organisation established more than 30 years ago, that supports the landcare community with funding, capacity building, on-ground projects, information, networking and promotion of landcare achievements. Landcare Australia also delivers major land restoration projects.

Across Australia, our partnerships support thousands of people involved in landcare who are working to protect local ecosystems that contribute to the sustainability and productivity of our land and water assets. Together with the landcare community, our efforts improve biodiversity, build resilience in Australia's food and farming systems, and create stronger communities. We are focused on supporting and working with First Nations, youth, women and engaging farmers and landholders in the emerging environmental markets.

Landcare enables people to actively care for the natural environment in their community through sustainable land management and conservation activities.

For more information please visit landcareaustralia.org.au.