



2021 / 2022 ANNUAL REPORT

Front cover:
First Nations Educator, Wiradjuri man Adam Shipp together with
Junior Landcarers for the launch for the Junior Landcare First
Nations learning activities for the Junior Landcare Learning Centre



All Australians caring for the land and water that sustains us

Landcare Australia is proud to acknowledge Aboriginal and Torres Strait Islander Peoples as the Traditional Custodians of the Country on which we live and work. We value and respect their deep and continued spiritual and cultural connections to the land, waters and seas, and pay our respects to their Ancestors and Elders past, present and future.

Contents



Landcare Australia proudly launched the Farm Dam Restoration project, a community program with Coca-Cola Australia Foundation (CCAF) restoring degraded farm dams across three states in Australia

Our Vision	02	Restoring Native Habitat Impact	42
About Landcare Australia	06	Landcare Farming Impact	44
About Landcare	10	Corporate Environmental Volunteering Impact	46
Message from the Chair	12	Sustainable Agriculture Impact	48
Message from the CEO	14	Coastcare Impact	50
2021-2022 HIGHLIGHTS	16	Junior Landcare Impact	52
Empowering young environmental champions with hands-on learning	18	LANDCARE AUSTRALIA PARTNERSHIPS	54
2021 National Landcare Conference and Landcare Awards	20	Government Partners	56
Growing Connection to Country	22	Corporate Partners	58
4 Pines and the Summer of Cricket	24	Decade of Restoration	68
Landcare Led Bushfire Recovery Grants Program	26	In-Kind Supporters	70
Nature Valley Summit to Sea	30	LANDCARE AUSTRALIA GOVERNANCE	72
landcarer.com.au	32	Landcare Australia Board of Directors	74
Landcare Australia, QUT and WIRES join forces for the WildSeek Project	34	Consolidated Statement of Profit & Loss	78
LANDCARE AUSTRALIA IMPACT	36	Consolidated Statement of Financial Position	79
Landcare Australia & UN SDGs Impact	38	Consolidated Statement of Cash Flows	80
Landcare Australia Impact Stats	40	Financial Overview	80

About Landcare Australia



ABOUT LANDCARE

Landcare is a grassroots movement of groups and individuals across Australia, with a shared vision to protect, enhance or restore the natural environment in their local community through sustainable land management and conservation activities. Landcare enables people to actively care for the natural environment in their community.

ABOUT LANDCARE AUSTRALIA

Landcare Australia is a national not-for-profit organisation established more than 30 years ago that supports the landcare community with funding, capacity-building, on-ground projects, information, networking and promotion of landcare achievements.

Together with the landcare community, our efforts improve biodiversity, build resilience in Australia's food and farming systems, and create stronger communities. As a leader in the environmental sector, Landcare Australia has strong expertise in designing, managing and completing challenging and complex major ecological restoration projects involving large scale revegetation and carbon abatement.

Established in 1989 by the late former Prime Minister, the Hon. Bob Hawke AC, Landcare Australia supports over 6,000 groups and 100,000+ volunteers with landcare projects that are focused on sustainable land management practices and environmental conservation.

From the coast to the country, and from urban cities to the outback, landcare's greatest asset is its people. The landcare movement is diverse and encompasses farmers and farming systems groups, landholders, landcare groups and networks, Traditional Owners, Bushcare and 'Friends of' groups, Coastcare, Dunecare and Rivercare groups, Landcare facilitators and coordinators, youth groups and other community groups involved in protecting, enhancing or restoring their local environment. The Junior Landcare program provides a pathway for children to become lifelong landcarers starting with early learning childhood centres through to primary and secondary schools.

Landcare Australia has worked collaboratively with federal, state and local governments and their agencies, Landcare peak bodies, corporate and

OUR VISION

All Australians actively caring for the land and water that sustains us.



OUR PURPOSE

- Empowering individuals and communities
- Sustainable management of natural and productive landscapes
- Building resilient ecosystems and communities

About Landcare Australia

philanthropic partners, sponsors, community groups and individuals to support the landcare community. This long-standing engagement with local community-led environmental initiatives has led to the organisation's renowned reputation and trust by Australians.

Landcare Australia develops campaigns in partnership with stakeholders to:

- Support the sharing of knowledge and promote the development of community leadership and resilience
- Recognise and celebrate the achievements of the landcare community
- Encourage participation in landcare activities and the recruitment and retention of volunteers
- Attract government, corporate and philanthropic funding and in-kind support for good quality, hands-on projects and programs that will improve environmental outcomes
- Support the adoption of sustainable agriculture practices that will deliver a more productive and profitable agriculture industry.

For over 30 years, Landcare Australia has worked at the forefront of community and corporate engagement in natural resource management and environmental project delivery. Custodian of the 'caring hands' logo, Landcare Australia manages the Landcare, Coastcare, Junior Landcare and Landcare Farming brands on behalf of the landcare movement.

The Landcare brand is recognised and trusted, with consistently positive attitudes in local communities towards landcare projects, and 78% awareness among Australians of the landcare 'Caring Hands' logo.

The funding and in-kind contributions raised from partnerships and sponsors supports Landcare Australia to develop programs that are practical, deliverable and community focused.

Through this support, Landcare Australia achieves a diverse range of positive environmental and community outcomes. These include:

- A sustainable approach to integrated land management
- Environmental protection, enhancement and conservation of land, water, waterways and coasts
- Natural habitat restoration to enhance biodiversity
- Building resilience in Australia's food and farming systems
- Creating social cohesion and wellbeing in communities.

With the intensifying impact of a changing climate, and natural disasters like drought, bushfires and flood, landcare has never been so important.

What makes Landcare Australia unique to any other national environmental organisation is effective partnerships and people. Across Australia, our partnerships support thousands of people involved in landcare who are volunteering to protect local ecosystems that contribute to the sustainability and productivity of our land and water assets for the benefit of all Australians.



Left: Former Australian Prime Minister Bob Hawke AC
Right: Junior Landcare volunteers, Sophie Taylor-Price and Coastcare volunteers



About Landcare



Landcare evolved in Victoria through an initiative of Joan Kirner, (then Minister for Conservation, Forests and Lands) and Heather Mitchell, (then President of the Victorian Farmers Federation).

With the generous support of community members, farmers and Victorian departmental officers, Heather Mitchell and Joan Kirner were able to launch 'Landcare' in a small town in central Victoria in November 1986.

Many Australian communities had already begun practising 'landcare' decades earlier; accounts from some of our most enduring Landcare groups show grass roots environmental issues being tackled as early as the 1950s. In January 1988, Australia's first official Dunecare groups formed on the New South Wales Mid North Coast at Hat Head, Diamond Beach, Scotts Head and Diggers Beach.

In 1989, the national landcare movement was officially recognised with Rick Farley of the National Farmers Federation (NFF), and Phillip Toyne of the Australian Conservation Foundation (ACF),

successfully encouraging the Hawke Government to commit to supporting the emerging movement.

Landcare became a national program on 20 July, 1989 in Wentworth NSW, when the Australian Government with bipartisan support, announced its "Decade of Landcare Plan" and committed \$320 million to fund the National Landcare Program. 1989 was also the year that the national not-for-profit organisation Landcare Australia was established.

The national formation of the landcare movement brought farmers and conservationists together to resolve environmental issues. In his speech to launch Landcare, former Prime Minister Bob Hawke AC spoke about the importance of co-operation to care for the land.

"The degradation of our environment is not simply a local problem, nor a problem for one state or another, nor for the Commonwealth alone. Rather, the damage being done to our environment is a problem for us all – and not just government - but for of us individually and together."

Over the last 30+ years, landcare has evolved to become one of the largest volunteer movements in Australia. There are thousands of people and countless communities working together towards sustainable land use and undertaking on-ground action to protect, enhance or restore an area on behalf of the community. The Landcare model has been so successful it has been adopted in over 20 countries.

Landcare plays a leading role in advocating a balance between Australian sustainable land management practices and environmental conservation.

Landcare activities deliver a diverse range of positive environmental and community outcomes. These include the environmental protection, enhancement and conservation of land, water, waterways and coasts, natural habitat restoration to enhance biodiversity, building resilience in Australia's food and farming systems, and helping create social cohesion and wellbeing in communities.

In the last three decades Landcare has achieved a great deal of good work. Yet there is much more to do. With the impact of a changing climate, and natural disasters like drought, bushfires and flood, landcare has never been so important.

Landcare Australia will continue to work in partnership with multiple stakeholders to support the Landcare community so they can continue to restore and protect the environment in communities across Australia. Landcare is about working together caring for the land to preserve our natural resources and biodiversity for generations to come. Landcare enables people to actively care for the natural environment in their community.

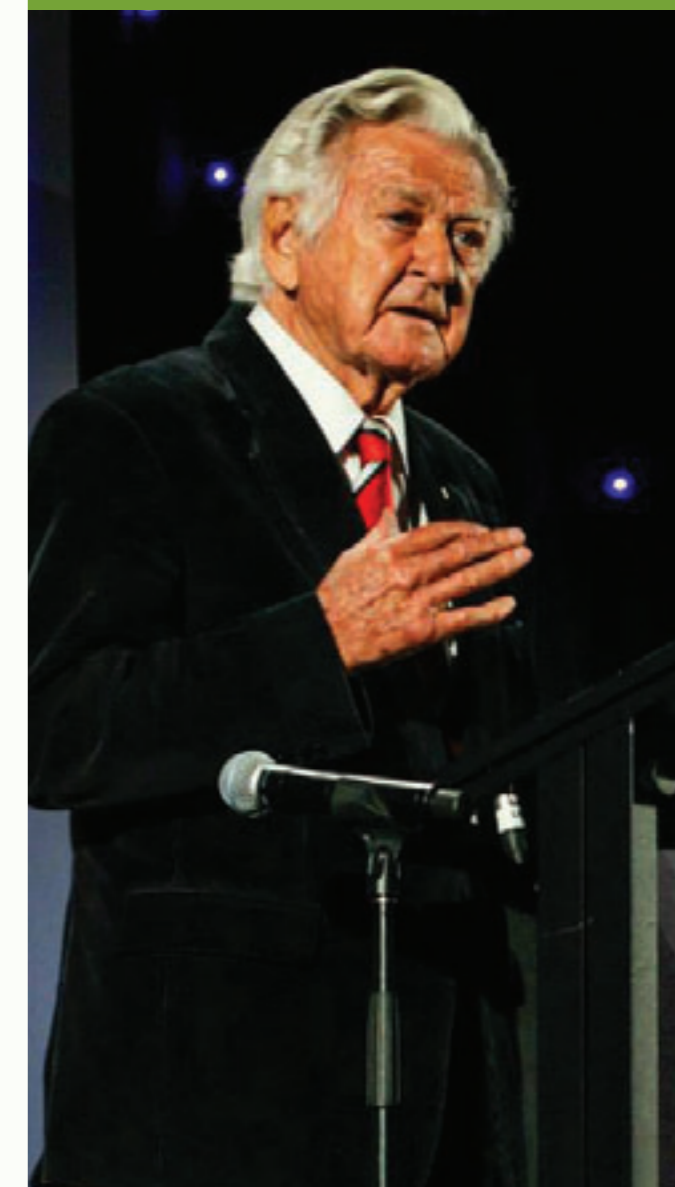
The Landcare movement is supported by Landcare Australia, the National Landcare Network and the peak bodies across Australia: Landcare Victoria, Landcare Tasmania, Landcare ACT, Landcare WA, NT Landcare, Queensland Water and Land Carers, Landcare NSW, Landcare South Australia.

“

The degradation of our environment is not simply a local problem, nor a problem for one state or another, nor for the Commonwealth alone. Rather, the damage being done to our environment is a problem for us all – and not just government - but for of us individually and together.

”

Former Prime Minister Bob Hawke



Message from the Chair- Doug Humann AM



The 2021/22 financial year saw continuing impacts of the global pandemic, floods, droughts and bushfires across Australia and its communities and landscapes, including on individuals and on landcare projects.

However, the determination and resilience of the tens of thousands of landcarers across the country who continue to volunteer their time to protect their communities and our unique natural environments not only provides hope, but serves as a reminder that landcare's power lies in its people. Landcare's power was recognised on an international stage with Landcare Australia receiving the 2021 United Nations Day Honour as an acknowledgement of the contribution to the work and purpose of the United Nations. This was a truly fantastic achievement, which Landcare Australia warmly received on behalf of the thousands of volunteers, groups and organisations involved in landcare. We are confident that our shared vision of using the landcare model as the blueprint for environmental and agricultural land management success will secure Australia's place as a global leader in sustainability.

Nowhere was this shared vision clearer than at the 2021 National Landcare Conference. Due to lockdown restrictions, this was the first time

the National Landcare Conference and National Landcare Awards were held completely online; yet even virtually, the passion and dedication for landcare was palpable. Over 3,000 delegates came together to inspire each other, share insights and hear from 80 stimulating speakers. The online events were an overwhelming success and demonstrated that even in the most challenging of circumstances, landcarers are always striving to overcome obstacles, support and learn from each other and protect what is precious to us.

When the 2021 State of the Environment Report was released this year, we were not only reminded of what is precious and unique about our natural and cultural environment, it also confirmed the deteriorating health of Australia's environment and that a changing climate is exacerbating existing pressures including the scale and propensity of natural disasters.

Especially in this context, landcare has never been more important.

With landcarers being on the front lines of increasingly critical conservation, agricultural, coastal, land and water management projects across the country, Landcare Australia is looking to be increasingly innovative and bolder in our work. By facilitating new partnerships and innovations, supporting the next generation of landcare leaders and listening and learning from the expertise of Aboriginal and Torres Strait Islanders, we are determined to ensure landcarers are at the centre of the national conversation of our nation's future and that the landcare community continues to be recognised a national leader in efforts to protect the Australian environment.

In line with this vision, we were delighted to welcome five new Directors to the Landcare Australia Board - Ricky Archer, CEO of the North



Australian Indigenous Land and Sea Management Alliance; Naomi Edwards, Co-Founder of Intrepid Landcare; Anna Hooper, agribusiness professional and viticulturist; Rebecca Underwood, agribusiness and sustainability professional; and James Walker, entrepreneur and award winning grazer. With their combined professional skills and background, these new Directors will ensure the Board and Landcare Australia is well placed to support stronger engagement with our diverse landcare community, including Traditional Owners and First Nations people, younger landcarers and the rural sector. We are already working closely with the new Australian Government to continue support for the important work being carried out by landcare volunteers, land managers and farmers, children and youth groups and First Nations organisations across Australia. We welcome the opportunity to work with the Hon. Murray Watt, Minister for Agriculture, Forestry and Fisheries and the Hon. Tanya Plibersek, Minister for the Environment and Water, along with the Hon. Linda Burney, Minister for Indigenous Australians. Landcare Australia will continue to focus on creating partnerships with multiple organisations that help deliver on better integration of conservation with agricultural productivity, which is at the heart of landcare and also key focus areas of the Australian Government.

Finally, this past year has seen some incredible results from our partnership programs, including those delivered with the support of the National Landcare Network. The landmark \$14 million

Landcare Led Bushfire Recovery Grants Program reported an impressive range of project successes, including Upper Snowy Landcare discovering, through climate testing, the best eucalyptus seed sources for future bushfire recovery efforts, and the South Australian Museum's research data leading to the Kangaroo Island Assassin Spider being listed as Critically Endangered under the EPBC Act.

These accomplishments add to the growing list of achievements of Landcare Australia, our partners and landcarers across the country. For over three decades we have proven time and time again that landcare has the expertise, the skills and the drive to get the job done. There is no question that Australia needs us now more than ever and we will continue to rise to that challenge.

In closing, I would like to acknowledge Landcare Australia's CEO Dr Shane Norrish for his leadership and the work that he has done to lead the team to make a significant impact. Thank you to the Landcare Australia team for your expertise, dedication and commitment to landcare and the work you are doing to help landcarers on the ground across Australia. We have so much to do in 2023, but we are well placed to respond to the challenges and opportunities ahead.



Message from the CEO- Dr Shane Norrish



Another year is behind us, and while there have been numerous challenges ranging from the increasing impacts of climate change to the ongoing effects of the pandemic, the landcare community has once again shown their remarkable strength, resilience and determination to overcome every hurdle in order to deliver for our communities and environment.

Together landcarers and Landcare Australia continue to be on the front lines of conservation and land management projects across Australia, and with 2021 marking the beginning of the United Nations Decade of Ecosystem Restoration, we have made it our focus to answer the global rallying cry to protect our planet.

This past year we have continued to deliver practical, community focused programs to halt and reverse the degradation of ecosystems. Landcare Australia has distributed over \$15 million in grants that have supported groups, organisations and schools involved in landcare to engage in a diverse range of activities including planting over 700,000 trees, installing over 5,000 nest boxes and artificial habitats and conducting over 3,500 biodiversity surveys- but like always, we are determined to go further. Much of this was delivered in conjunction with the NLN and Landcare STOs as part of the successful Landcare Led Bushfire Recovery Program.

Growing our commitment to supporting Australian farmers to be recognised as world leaders in

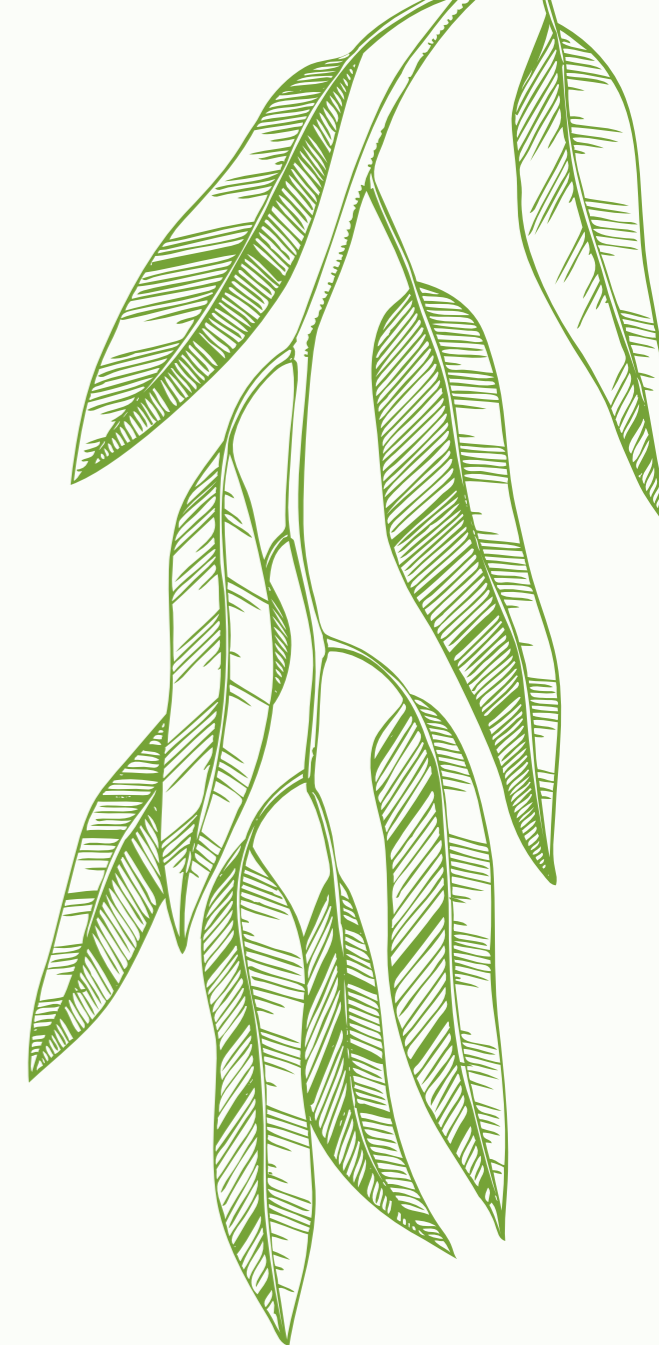
landcare and sustainable agriculture, we have been working to deliver even more projects through our Landcare Farming program.

A key characteristic of landcare is the integration of productive land management with conservation and protection of natural assets, and together with Accounting for Nature and Integrity Ag, the Landcare Farming Program has seen us deliver 56 natural capital and carbon accounting workshops to approximately 600 participants, building capacity for Australian farmers and graziers to participate in emerging environmental markets.

Landcare Australia has also recently launched Landcare CarbonSMART, marking our return to the rapidly expanding Australian carbon market. In partnership with leading nature-based carbon project developer GreenCollar, and with a focus on providing corporate Australia with Australian Carbon Credit Units (ACCUs) sourced from carefully-selected projects that are delivering outstanding ecological co-benefits, this new venture will be able to provide better support and further build capacity for the many thousands of landcare groups across Australia.

Partnerships are what Landcare Australia does best, and over the course of the year we have also continued to work closely with our growing number of partners to design, manage and deliver on a large number of exciting new projects. From our WildSeek Project partnership with WIRES and the Queensland University of Technology which is taking the first step toward building a national conservation AI network, to our long-term alliance with Woolworths to deliver the fourth round of the highly successful Woolworths Junior Landcare Grants, these partnerships are producing impressive results for all facets of landcare across Australia.

The Biodiversity Project with Country Road is delivering biodiversity enhancements in cotton landscapes and we're planting four trees for every four runs hit by the Australian Mens Cricket Team during Australia's summer of cricket with 4 Pines. We are building partnerships with organisations who want to make a positive impact on the environment,



people and communities and we thank our partners for their support.

While it is clear that the ongoing effects of extreme events will continue to present obstacles, there is no doubt that together with landcare volunteers, groups and our corporate partners, Landcare Australia has never been better placed to tackle some of our most pressing environmental challenges. Our work to restore Australia's unique ecosystems, improve land and water management practices across the country and support the critical work of landcarers speaks for itself and demonstrates that landcare remains front and centre when it comes to building resilient communities and productive, biodiverse landscapes.

nbn volunteers from Sydney
volunteering with IndigiGrow,
learning about Indigenous bush
foods and supporting the native
plant nursery



2021-2022 HIGHLIGHTS



Empowering young environmental champions with hands-on learning

“
Each project is a terrific example of how children can feel empowered to recognise and seek out opportunities to care for their local environment.
”

Loretta Arrastia,
Community Programs Manager
Woolworths Supermarkets

As part of its commitment to growing the next generation of environmental champions, Woolworths partnered with Landcare Australia for a fourth round of the Woolworths Junior Landcare Grants. In early June 2022, 1,054 primary schools and early learning centres across the country received grants of up to \$1,000 each.

The Woolworths Junior Landcare Grants program offers children the opportunity to share knowledge, create experiences and develop skills so they have a deeper understanding and appreciation of sustainable food production, recycling and improving waste management, enhancing native habitats, and First Nations perspectives.

Since the Woolworths Junior Landcare Grants program launched in 2018, more than 3,800 recipients have shared over \$4 million in funding, with the program having already reached over 200,000 children through the first three rounds.

Participants in round three completed their projects in late 2021. Projects ranged from installing bee hotels to growing sustainable veggie gardens, and saw the planting of 38,757 native plants and 23,966 sensory plants, herbs and flowers.

In May 2022, to help children learn more about how they can have a connection to Country, Woolworths supported the development of 10 new First Nations learning activities for the Junior Landcare Learning Centre – an online platform with curriculum-linked activities for educators, parents, carers and Landcare facilitators. The activities were developed together with First Nations educator, Wiradjuri man Adam Shipp. They include topics exploring First Nations peoples' languages, First Nations weather and creating an Indigenous plant use garden, and were launched with a free webinar to assist educators and Landcare facilitators to confidently and respectfully address First Nations perspectives in their teaching.



2021 National Landcare Conference and Landcare Awards

Costa hosting the online 2021 National Landcare Conference and Landcare Awards

Even a global pandemic could not stop over 3,000 passionate landcarers coming together online to participate in the 2021 National Landcare Conference and National Landcare Awards.

Hosted by Landcare advocate and Junior Landcare ambassador Costa Georgiadis, the two-day event was broadcast from Sydney's International Convention Centre and featured over 100 speakers including volunteers, groups, organisations, academics, facilitators and First Nations people involved in landcare activities.

The online Conference was a huge success, allowing delegates from across Australia and around the world to hear about a wealth of landcare activities and take home new knowledge to put into practice on their own projects. To ensure landcarers could

continue to benefit from the presentations, all speaker sessions were recorded and made available as education resources on Landcare Australia's website Landcarer.

For the first time, the 2021 National Landcare Awards were hosted online as part of the Conference and included participation from the state and territory Landcare peak bodies. Over 62 finalists and their local communities tuned in for the winner announcements of the nine National Landcare Award categories, with Victoria's Andrew Stewart from Victoria being announced as the winner of the 2020 Bob Hawke Landcare Award, and the inaugural General Jeffery Soil Health Award being presented to Professor Lynnette Abbott.

THE 2021 NATIONAL LANDCARE AWARD WINNERS:

Australian Government Individual Landcarer Award: Basil Schur from WA

Australian Government Landcare Farming Award: Amarula Dorpers from NSW

Australian Government Innovation in Agriculture Award: Redbank Farm from TAS

Australian Government Partnerships for Landcare Award: Floating Landcare from NSW

Woolworths Junior Landcare Team Award: Newham Public School from VIC

Austcover Young Landcare Leadership Award: Dhani Gilbert from the ACT

ACM Landcare Community Group Award: Red Hill Bush Regenerators from the ACT

Coastcare Award: Dhimurru Aboriginal Corporation from the NT

KPMG Indigenous Land Management Award: Wunambaal Gaambera Aboriginal Corporation from WA

Bob Hawke Landcare Award Winner: Andrew Stewart from VIC

General Jeffery Soil Health Award Winner: Professor Lynnette Abbott from WA

Growing Connection to Country

The Barkindji people have called the Darling River “Baaka” for thousands of years. Between July 2021 and June 2022, Western Landcare NSW visited seven out of the 10 primary schools along the Baaka/ Darling River to help deepen connections with First Nations perspectives and grow awareness among students of the measures they can take to protect their local environment.

Funded by donations to Landcare Australia, Western Landcare NSW delivered a range of practical, river-based activities to the isolated schools, from water bug surveys and water-testing to show students how their quality of water compared to the nearest testing station in real time, to the ‘Creation Story’ activity about how the Baaka/Darling River was formed.

“By breaking down these issues and working through them directly with students, they are able to grow an attachment to something they want to learn more about; this then flows into their families at home and the wider community as well,” said Thel O’Shea,



Project Officer, Western Landcare NSW. Drawing on the area’s rich cultural history, Western Landcare NSW also held a ‘Connection to Country’ field day with Ivanhoe Central School in far west NSW. The children spent the day learning how to build fires, make their own shelter, and decipher native animal tracks; they also tasted traditional food like kangaroo, and enjoyed storytelling based on the local rock art. First Nations children were able to share stories about what their family members had told them.

The ‘Connection to Country’ field day activities were captured for a mini documentary entitled ‘Connecting Country, Culture, People and Tradition’ to inspire others to set up their own days of discovery for children to experience “what it’s like to be part of an age-old culture” and “give them a sense of continuity when it comes to learning what is important,” as noted by Ivanhoe Central School assistant principal Alison Johnstone in the film.

Above left: Vanessa Anderson, Wentworth Coordinator, Western Landcare NSW, helping students understand ecosystems at St. Patrick’s Primary School, Brewarrina, using an interactive ecosystem quilt
Above right: Vanessa Anderson with students at St. Therese’s Community School, Wilcannia, NSW
Opposite: Thel O’Shea, Wentworth Project Officer, Western Landcare NSW, conducting water bug surveys and river-related activities at Palinyewah Public School, Ellerslie, NSW



Sustainable agriculture, sustainable future

4 Pines and the Summer of Cricket



*Insert above: In collaboration with the Far South Coast Landcare Association and local bush regenerator Paddy Farrell, Landcare Australia facilitated planting at Ryefield Hops in Bemboka, NSW, with members of the 4 Pines team on site to lend a hand
Background: Inspecting the site at Cape Jervis on South Australia's Fleurieu Peninsula
Photo credit: Reinhardt O'Kennedy Hardt Films*

As the official beer partner of the Australian Men's Cricket Team for the 2021/2022 Summer of Cricket, 4 Pines Brewing Company partnered with Landcare Australia to plant four trees for every four hit over the summer (up to 44,444).

The initiative featured Australian Men's Cricket captain Pat Cummins, a passionate advocate for sustainability and climate change initiatives, who inspired the team to get more runs for their tree-planting goal. It was also supported by exciting creative executions across TV and outdoor media. Following the team's Ashes victory and as part of

its commitment to Brew Better, 4 Pines committed to funding the planting of 44,444 native Australian trees, shrubs and groundcovers at Cape Jervis on South Australia's Fleurieu Peninsula.

Planting got underway in July and revegetation across 44 hectares in this strategic location will enhance landscape connectivity, improve biodiversity and provide long term habitat for threatened species, including the Glossy Black Cockatoo. To illustrate the environmental significance of this project, a Glossy Black Cockatoo has been sighted on the mainland recently for the

first time in a very long time. Habitat loss forced the Glossy Black Cockatoo to retreat to Kangaroo Island, just over the water from the 4 Pines planting project.

To support biodiversity and sustainable agricultural outcomes in the brewer's supply chain, 4 Pines has also partnered with Landcare Australia to regenerate 4 hectares of riparian habitat on an eroded creek line at Ryefield Hops – a family-owned hop farm in Bemboka, NSW, that supplies 4 Pines.

Following on from phase 1 of the initiative – in which 1,000 trees were planted in 2021 – an additional

2,000 native seedlings were planted in April 2022. Landcare Australia facilitated this on-ground agriculture project, in collaboration with the Far South Coast Landcare Association and local Bush Regenerator Paddy Farrell.

The planting was made possible through 4 Pines Brewing Co.'s 1% For The Planet fund. This fund is amassed by diverting 1% of the revenue from 4 Pines Pacific Ale, Pale Ale, Extra Refreshing Ale and more recently Ultra Low to be utilised for environmental projects.

Landcare Led Bushfire Recovery Grants Program

Landcarers across Australia have been celebrating their outstanding achievements for bushfire affected environments and communities following the completion of the landmark \$14 million Landcare Led Bushfire Recovery Grants Program.

Launched in May 2021 and supported by the Australian Government's Bushfire Recovery Program for Wildlife and their Habitat, the program was managed in partnership between Landcare Australia, the National Landcare Network and the peak Landcare State and Territory organisations.

Together almost 66,000 Australians - including over 10,000 volunteers, worked together to deliver 111 community-driven projects in bushfire affected areas out over seven government designated bushfire regions impacted by the Black Summer Bushfires:

- The rainforests of South-East QLD
- The rainforests of the NSW North Coast and Tablelands
- The World Heritage listed Greater Blue Mountains
- The forests of the NSW South Coast
- The alpine environments across ACT, NSW and VIC
- The forests and coastal ecosystems of East Gippsland
- Kangaroo Island

With project successes ranging from Upper Snowy Landcare discovering the best eucalyptus seed sources for future bushfire recovery efforts through climate testing, to the South Australian Museum's research data leading to the Kangaroo Island Assassin Spider being listed as Critically Endangered under the EPBC Act. The program has had an

overwhelmingly positive impact across some of Australia's most heavily bushfire affected regions.

Landcare Australia CEO, Dr Shane Norrish, applauded the outstanding results, saying, "Forming effective partnerships is what landcare does best, and the Landcare Led Bushfire Recovery Grants program really highlights our unbeatable impact when we unite to take action. By bringing together a diverse range of expertise and experience from multiple stakeholders, this program has delivered practical, innovative and science driven projects utilising cutting-edge technology including artificial intelligence, drone monitoring and DNA science." The fantastic accomplishments of the Landcare Led Bushfire Recovery Grants Program and the partnerships that have endured following project completion, showcase the value of engaging in local environmental protection projects to support the recovery and wellbeing of bushfire-affected communities.

CEO of the National Landcare Network, Jim Adams, outlined how the program served as a testament of the strength of Australia's landcare movement, saying, "The Landcare movement is driven the tens of thousands of landcarers across Australia who share their expertise and bring communities together to take action for their environments, and this program has really shown how effectively we can act at scale in disaster response and recovery.

The overwhelming success of these landcare-led projects shows the model is well placed to be scaled as required and tackle future disaster responses and deliver real action on the pressing climate and environmental challenges of our times."

The Landcare Led Bushfire Recovery Grants Program is a \$14 million program funding community-driven projects across bushfire affected areas of Queensland, New South Wales, the Australian Capital Territory, Victoria and South Australia.

Together the 111 projects funded by the Program benefitted over 100 federal and state listed threatened species and ecological communities, including 16 mammal species, 16 bird species, 9 frog species, 34 plant species and 16 threatened vegetation communities.

Supported by the Australian Government's Bushfire Recovery Program for Wildlife and their Habitat, the Landcare Led Bushfire Recovery Grants Program is managed by a partnership between Landcare Australia, the National Landcare Network and the Peak Landcare State and Territory Landcare organisations.

For further information, visit the Program Website: <https://landcareledbushfiregrants.org.au/>



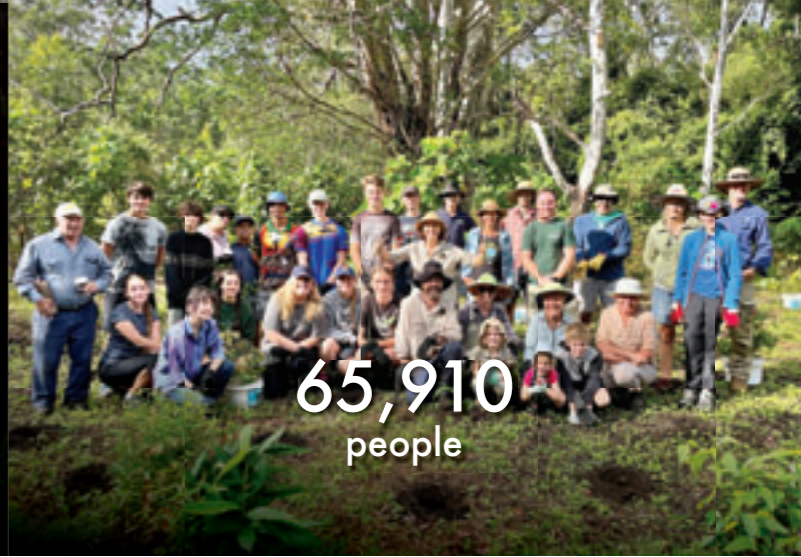
BUSHFIRE RECOVERY IMPACT STATS



\$14 MILLION
funding



111
community driven
projects



65,910
people

ENVIRONMENTAL IMPACT



307,306
plants established

COMMUNITY IMPACT



10,589
volunteers

3,205
biodiversity
surveys



48
animal species
supported



79,751
volunteer hours



424
partner groups
and other
organisations



4,340 ha
weeding



3,334
nestboxes
and
habitats
installed



52
projects
involving First
Nations groups



1,329
community days, events
and workshops



Nature Valley Summit to Sea

Below: National Parks and Wildlife Service staff taking a break from working on trail construction



Nature Valley™, a General Mills brand, is passionate about people getting out more and giving back so we can all experience the magic of the great outdoors. In late 2020, Nature Valley™ turned this passion into action by partnering with Landcare Australia to support the rejuvenation of bushfire affected walking trails with the launch of the Nature Valley™ Trails Landcare Grants program. Two grants with a combined value of \$80,000 were awarded to not-for-

profit environmental conservation groups, including to Nambucca Valley Landcare on New South Wales' mid-north coast.

By partnering with the NSW National Parks and Wildlife Service, Nambucca Valley Council, volunteers and local schools, Nambucca Valley Landcare group was able to quickly get to work enhancing the Summit to Sea Walking Track. The 12km trail

connecting the summit of Mt Yarrhapinni to the coast at Grassy Head traverses through Yarriabini National Park, one of the most important pockets of rainforest on the coast that serves as a vital refuge for animals fleeing the fire impacted Nambucca Valley.

The project commenced in the first half of 2021, with the group adding boardwalks, steps and managing vegetation. However due to the COVID-19

lock-downs in New South Wales, its completion, while originally scheduled for September 2021, was delayed until early 2022. With the track now officially reopened and thanks to the incredible work of Nambucca Valley Landcare and their partners, visitors can now walk across a mosaic of different habitats and have the opportunity to connect to an area that is highly significant to the Dughutti, Ngambaa and Gumbaynggirr Aboriginal people.



landcarer.com.au

From the Whadjuk region in the Wildflower State to the Eora Nation of the east coast, Landcarer v2.0 is connecting landcarers and other individuals, groups and organisations involved in natural resource management activities.

The new Landcarer is a user generated content website that helps to share knowledge, access education resources, publish resources including videos and printed materials, and connect online with other like-minded people through the 12 Communities of Practice.

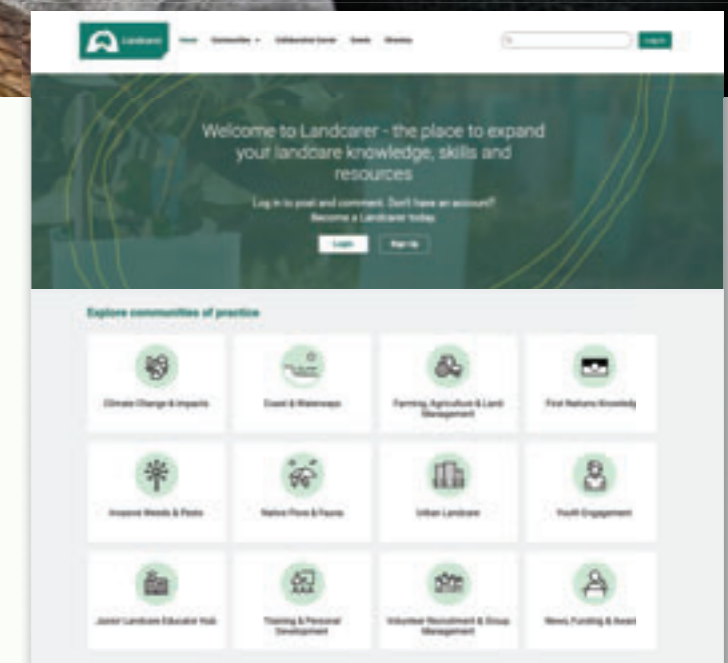
One group lauding the upgraded Landcarer website is the Cattai Hills Environment Network (CHEN) who have utilised the improved website to promote and share their landcare group activities, successes stories and upcoming events. From their blogs on native species conservation to the results of their platypus spotting days, they have found Landcarer a useful platform to share their content with people outside their local community.

Cattai Aware Project Officer, Danielle Packer, welcomes the collaboration now possible with

Landcarer, it has helped them to engage with other groups and share advice online.

One website feature, Danielle praises CHEN's ability to post long-form articles to, "really get our message out and hopefully connect us to landholders and Landcare groups, while entertaining our readers with stories and images that support our message."

Right: The landing page of landcarer.com.au, which features 12 Communities of Practice, access to blog posts, event listings and library entries for landcarers by landcarers



Landcare Australia, QUT and WIRES join forces for the WildSeek Project



Above: Landcare volunteers, drone pilots, WIRES COO Kyla Shelley and Landcare Australia CEO Dr Shane Norrish at the launch of the WildSeek Project

In June 2022, Landcare Australia, WIRES and Queensland University of Technology (QUT) joined together to launch the WildSeek Project: Community Wildlife Intelligence Hubs, taking the first step toward building a national conservation AI network.

The project is establishing and supporting a network of Community Hubs for the conservation and rescue response of native species. While initially focusing on identifying koalas, there is potential to expand the project to include multiple species including kangaroos, wallabies, and wombats.

Partners are providing over \$1,500,000 in funding over three years to support the project, with a significant contribution by WIRES. QUT is serving as the National Conservation AI Analytics hub where drone footage collected around the country will be analysed using a QUT created algorithm to identify wildlife populations.

Coordinated by Landcare Australia, the project is establishing five Community Hubs for data collection and rescue response across New South Wales, Queensland and Victoria. Each Hub is equipped with innovative technology, capacity, support systems and training to generate and share accurate data on wildlife populations and individual animals. This will enable a more effective response in emergency situations by significantly improving knowledge of wildlife density and distribution across each region.

To support the project, a select number of local landcare group members and citizen scientist volunteers are being trained and licenced to use drones in order to capture data on local native animals. Following licencing, QUT Drone Team experts will run a 3-day support and strategy workshop to provide survey standards, data management and wildlife ethics training, as well as working through a range of on-ground scenarios.

Together local partners, staff and volunteers will use the data captured at the hubs and analysed by QUT to make informed decisions regarding advocacy, protection and management of koalas, other wildlife and their habitat.



LANDCARE
AUSTRALIA
IMPACT

Landcare Australia & UN SDGs Impact

The Sustainable Development Goals (SDGs) - adopted by the United Nations Member States in 2015 - are the blueprint to achieve a better and more sustainable future for all.

Landcare Australia's work during FY2022 contributed to 11 of the 17 SDGs, with 1,565 projects funded focusing on a number of significant focus areas, including marine and coastal ecosystem health, biodiversity and habitat, water quality improvements, and sustainable agriculture.

Data gathered through Landcare Australia's reporting process assists our partners to illustrate how their work with Landcare Australia contributes towards the SDGs, a focus area for many businesses. From on-ground conservation work to supporting farmers to adopt sustainable practices, building resilience in the face of natural disasters, and educating the next generation of Landcarers, the extensiveness of Landcare Australia's work directly contributes to this valued and important global initiative.



Zero hunger

- The Landcare Farming Program supported the Barfield Road Producer Group, a group of 16 beef and grain producers covering an area of more than 50,000ha in central Queensland. The group is adopting sustainable agriculture practices that will deliver a more productive and profitable agricultural industry, and supporting other growers to do the same.
- 13 projects enhancing productive land were funded through Landcare Australia grants programs, and 63,652 hectares of farmland was enhanced.

Contributed to target 2.4



Quality education

- 1,091 Junior Landcare projects engaging 122,489 young people were funded, providing skills and knowledge related to sustainability and caring for the natural environment, and hands-on learning opportunities
- Landcare Australia developed and published 14 learning activities on the online Junior Landcare Learning Centre, supported by Woolworths. Two professional development webinars were also hosted for educators, focusing on First Nations perspectives learning activities and pollinators.

Contributed to targets 4.4 and 4.7



Clean water and sanitation

- 94,865 plants were established in riparian areas, resulting in environmental outcomes such as erosion reduction, improved water quality and enhanced habitat.
- 51 projects were funded which sought to protect or manage freshwater-related ecosystems, and 4,435kg of litter was removed from in or around water bodies.
- Landcare Australia partnered with Adelaide Airport to improve water quality and support local fauna along Brown Hill Creek. Working with local volunteers to undertake habitat restoration works, 3,500 Indigenous plants were planted, and weeds cleared from a five hectare area.

Contributed to targets 6.3 and 6.6



Ensure access to affordable, reliable, sustainable and modern energy for all

- Four projects were funded through the partnership between a2 Milk™ and Landcare Australia focusing on both reducing overall energy use, and increasing the use of renewable energy in dairy farm operations.

Contributed to targets 7.2 and 7.3



Decent work and economic growth

- Seven projects were funded through the a2 Milk and Landcare Australia partnerships, providing more than \$200,000 to dairy farmers to support initiatives to help increase the sustainability of their operations.
- Through the Landcare Farming Program, the Landcare Australia Natural Capital Accounting (NCA) project provided training and developed environmental baseline reports for producers. Integrity Ag delivered carbon accounting workshops to more than 200 primary producers from across Australia, and Accounting for Nature delivered natural capital accounting workshops to 278 agricultural industry stakeholders. This project includes peer-to-peer learning, and assists producers to understand and benefit from environmental management of their farmland.

Contributed to target 8.4



Sustainable cities and communities

- 266 projects funded through Landcare Australia included activities that promoted and conserved traditional knowledge. Activities undertaken by groups and schools to help safeguard First Nations culture and heritage include smoking ceremonies, traditional art workshops and Welcome to Country ceremonies.
- 404 hectares of public land was restored through Landcare Australia funded projects, improving the environmental health and accessibility of green spaces in local communities.

Contributed to targets 11.4 and 11.7



Responsible consumption and production

- 484 projects involved waste management activities, including clean-ups, recycling, waste reduction or upcycling.
- 100,105kg of litter was collected by more than 50,000 people. Projects funded through the Woolworths Junior Landcare Grants program and Coca-Cola Foundation Coastcare Grants included a significant level of waste reduction and diversion of waste from landfill.

Contributed to targets 12.4, 12.5 and 12.6



Climate action

- 111 projects were funded through the Department of Agriculture, Water and Environment bushfire recovery grants program, supporting bushfire-affected communities in recovery and resilience initiatives.

Contributed to target 13.1



Life below water

- 9 projects were funded that protected coastal or marine environments, including eight Coca-Cola Foundation Coastcare Grant projects, engaging communities across the country in dune stabilisation, revegetation, erosion mitigation, and beach clean-ups.
- 1,957kg of debris and litter was collected from coastal areas through the Coca-Cola Foundation Coastcare Grants projects, including clean-up activities in Tasmania, the Northern Territory's Arnhem Coast and South Australia's Hindmarsh Island.

Contributed to target 14.1 and 14.2



Life on land

- 5,298 nest boxes or artificial habitats were installed, supporting biodiversity, and helping reduce the level of risk to threatened species.
- 9,152 hectares of weed control was undertaken, 3,643 biodiversity surveys conducted, and 447,123 plants established, reducing the degradation of natural habitats and the loss of biodiversity.

Contributed to target 15.3, 15.5, 15.8 and 15.a



Partnerships for the goals

- Landcare Australia worked in partnership with 18 businesses, the Australian Government and the Victorian Government to fund 1,565 projects which supported the achievement of the Sustainable Development Goals.
- 700 volunteers from 12 businesses worked in partnership with 17 Landcare and other environmental groups to plant trees, control weeds, and provide funding to local conservation projects.

Contributed to target 17.16

2021/2022 FINANCIAL YEAR
LANDCARE AUSTRALIA IMPACT

1,269

PROJECTS FUNDED
BY GRANTS

\$15.766M

FUNDING AWARDED TO GROUPS
THROUGH GRANTS, CORPORATE
ENVIRONMENTAL VOLUNTEERING AND
DONATIONS

122,489

STUDENTS INVOLVED IN
JUNIOR LANDCARE PROJECTS

3,595

HOURS OF CORPORATE
ENVIRONMENTAL VOLUNTEERING

702,596

TREES AND PLANTS
ESTABLISHED

10,074

HECTARES OF
WEED CONTROL

1,957

KILOGRAMS OF
MARINE DEBRIS REMOVED

94,865

NUMBER OF PLANTS
ESTABLISHED IN RIPARIAN ZONES

5,298

NEST BOXES/ARTIFICIAL HABITATS
INSTALLED

3,643

BIODIVERSITY
SURVEYS CONDUCTED

103,822

LENGTH IN METRES OF FENCE INSTALLED

112,922

VOLUNTEERS INVOLVED



Restoring Native Habitat Impact

The Australian eco-friendly wine brand from Accolade Wines, Banrock Station, continues to partner with Landcare Australia to plant 100,000 native trees and shrubs each year to support biodiversity, animal habitats, clean air and water, while responding to the impacts of a changing climate and deforestation.

Central to Banrock Station is a genuine commitment to the environment. For more than 25 years a portion of profits from every Banrock Station wine sold have been reinvested to support conservation projects around the world, with a particular focus in protecting its wetlands in South Australia.

Over the years, Banrock Station has contributed over \$6 million to more than 130 environmental projects across 13 countries, including restoring 1,000 hectares of internationally important wetlands at Banrock Station's home in the Riverland, South Australia, in partnership with Landcare Australia.

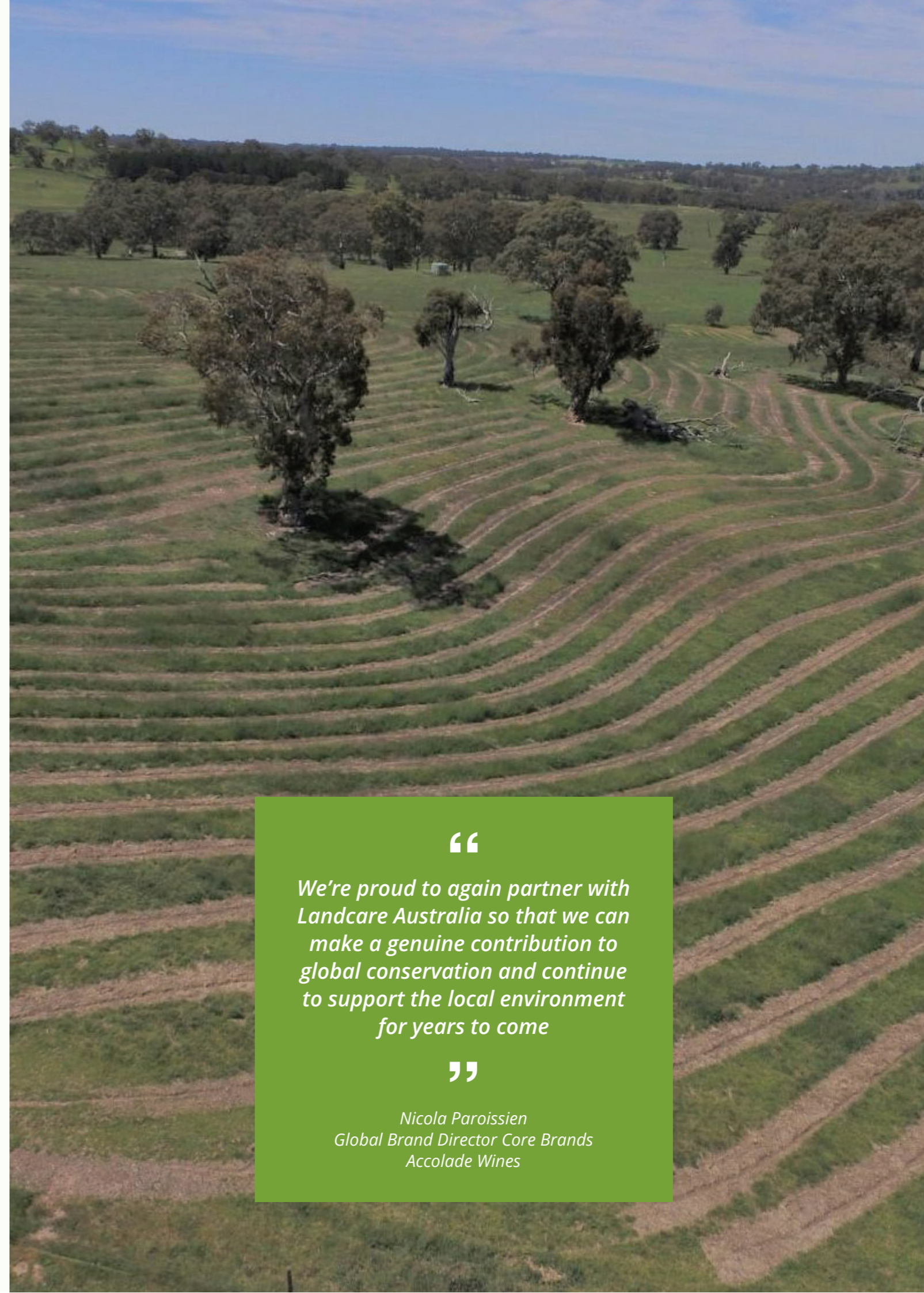
Building on a long history of collaboration, including planting 80,500 trees on Banrock Station as part of the Australian Government's 20 Million Trees Program, Banrock Station and Landcare Australia's latest undertaking has seen five planting projects take place across South Australia since 2021.

The five sites comprise of Sedan, Angus Valley, Mannum, Rockleigh and Cromer, where the revegetation will help to increase landscape connectivity while also helping to improve conservation efforts for a number of endangered or vulnerable plant and animal species, such as the Southern Brown Bandicoot (Cromer), the Diamond Firetail (Sedan), and critically endangered Mallee Box woodland of the Murray Darling and Riverina Bioregions (Rockleigh).

Thanks to local landcare and community group involvement over the last two years in seed collection activities, we have achieved:

- 147 hectares of land has been revegetated
- 320 kilometres of direct seeding lines have been sown
- 7 vegetation associations have been restored
- Approximately 207,000 plants established
- 45 different species of native plants used across the 5 project sites.

Nicola Paroissien, Global Brand Director Core Brands at Accolade Wines, said: "We're proud to again partner with Landcare Australia so that we can make a genuine contribution to global conservation and continue to support the local environment for years to come."



“

We're proud to again partner with Landcare Australia so that we can make a genuine contribution to global conservation and continue to support the local environment for years to come

”

*Nicola Paroissien
Global Brand Director Core Brands
Accolade Wines*

Landcare Farming Impact

The Landcare Farming Program (LFP) is a joint initiative between Landcare Australia and the National Landcare Network, funded by the Australian Government's National Landcare Program. Over the last year, the LFP has worked with multiple leading agriculture stakeholders, including The Barfield Road Producers Group (BRPG), Integrity Ag, Hort Innovation Australia, Cotton Australia and Accounting for Nature in developing and testing biodiversity frameworks. The LFP is also participating in co-design panels with Climate Works and Latrobe University for natural capital methods, and is partnering in four Drought Research Hubs and the National Soil Strategy. The partnerships with these organisations and groups has allowed the LFP to gain deeper recognition with agricultural stakeholders.

Integrity Ag® was engaged by LFP to deliver carbon accounting workshops to more than 200 primary producers from across Australia with producers developing skills and understanding of the carbon balance in a farm business and being supported to complete a carbon account for their enterprise.

Accounting for Nature® Ltd delivered natural capital accounting workshops (for LFP) to 278 stakeholders within the agricultural industry. The Landcare Australia Natural Capital Accounting (NCA) project aimed to provide training and develop environmental baseline reports for producers using a common set of baseline information.

The producers who engaged in these workshops were invited to develop demonstration sites to showcase the management practices required to build their Carbon and natural capital on-farm, with 13 groups approved to conduct these projects. These projects are investigating contemporary issues facing Australian land managers and will support the primary producers involved to manage their own investigations and create momentum for 'first followers' (early adopters) to engage in peer-to-peer learning, and grow a community of producers who understand and benefit from environmental management of their land.

These producer groups are currently testing a range

of topics to develop a series of evidence-based case studies that can be used as a benchmark for influencing changes to Australia's current farming system at the farmer, consumer and policy level.

Projects include investigations into establishing models for a basic environmental accounts (assets and condition) to help identify the regional opportunities and/or liabilities for producers on their farm and assessing the adoptability of identified carbon and biodiversity opportunities; demonstrating how Level 3 natural capital accounting can be used to measure the condition of native vegetation over time and inform management practices to improve its condition for eco-credentials and investigating livestock feed additives and feed choices and their ability to reduce methane output. LFP is currently collaborating with these project groups to develop and share their stories of these innovative land management practices.

LFP has supported the Barfield Road Producer Group (Central QLD) to adopt sustainable agriculture

practices that will deliver a more productive and profitable agricultural industry. BRPG recognised a need to build extension and adoption networks to increase knowledge in the areas of carbon and natural capital. The group comprises of 16 beef and grain producer families, covering an area of over 50,000ha in the Fitzroy Basin and Burnett Mary Region (Great Barrier Reef catchment). With a commitment to lead the way for education and extension activities, the group has set out a series of evidence-based practices to highlight a path forward for other producers who are keen to participate but are overwhelmed with information. A peer-to-peer learning structure provides a practical approach, and the on-farm experience engages a broad audience and level of uptake.

The co-benefits of all of the Landcare Farming projects being managed Australia wide are far reaching and will include improved management of business, people, carbon, vegetation, groundcover, drought resilience and biodiversity.



Corporate Environmental Volunteering Impact

37

CEV EVENTS

16

HOST GROUPS

700

PEOPLE

3,595

HOURS OF WORK

16,373

SEEDLINGS PLANTED

8,050

SEEDLINGS PROPAGATED

4.5ha

WEED REMOVAL
152KG LITTER REMOVED
FROM BEACHES AND
RIPARIAN AREAS
(WATERWAYS)

15

EVENTS INVOLVED
FIRST NATIONS
PEOPLE AND
CULTURAL LEARNING
ACTIVITIES

6

COASTCARE EVENTS

3

EVENTS ENHANCING
BIODIVERSITY ON
FARMS

11

RIPARIAN
ENVIRONMENTS AND
MANGROVES

11

COLLECTING SEED
AND PROPAGATING
NATIVE SEEDLINGS IN
NURSERIES

4

EVENTS MANAGING
WEEDS IN URBAN
BUSHLAND RESERVES

22

EVENTS INVOLVING
PLANTING

7

EVENTS DOING
LITTER COLLECTION

152kg

LITTER REMOVED
FROM BEACHES AND
RIPARIAN AREAS
(WATERWAYS)

VOLUNTEERS CONTRIBUTED to improved habitat and connectivity, revegetation, weed management, water quality improvements, improved farm land, and engaged in environmental awareness and First Nation's land management and cultural knowledge exchange.



Opposite page 1. CHEP Greater Sydney Landcare 2. Konica Minolta Indigi Grow 3. Lion Indigi Grow 4. NBN Port Phillip EcoCentre 5. Transurban Friends of Kororoit Creek 6. Pernod Ricard Bushlink Coastcare 7. Pernod Ricard Mullaloo Coastcare 8. Pernod Ricard Barossa Bushland

Sustainable Agriculture Impact

The Gallagher Landcare Electric Fencing Grants program has seen over 50 graziers, landcarers and community groups supported to improve agricultural outcomes, take action for the environment and share their knowledge through field days, site visits or demonstrations.

As part of the 2021 grants round, Marg and Dave Gillespie undertook a large-scale fencing project on their 1754 ha Clarence River based property where

they have been working to put in place sustainable, regenerative land management practices. One of their many projects includes the rehabilitation of a deep erosion incision cutting through the property, and the protection of an intact “chain of ponds” - a unique and environmentally valuable natural feature that comprises a series of ponds linked by shallow waterways.

With the support of Gallagher Australia, the

Gillespies installed more than 2.5km of Gallagher Permanent Electric Fencing constructed with Gallagher Mega Anchor and Insulated Line Posts and powered by a Portable Solar Energizer. This has stopped cattle from entering the critical “chain of ponds” area and allowed regeneration and revegetation to occur, including the growth of reeds on the floor of the erosion site to collect debris and build material on the bottom of the incision, and trees and lomandras at the chain of ponds site to

slow water flow and improve soil fertility. As a result of the project, water and sediment flow has been slowed and the banks are beginning to stabilise, reducing the amount of top soil being dislodged and ultimately improving the health of the Clarence River downstream. The Gillespies have also showcased the project to the President of their local landcare group and seven farmers from across NSW to share knowledge about the importance of fencing in erosion control.



*Insert left: Dave Gillespie installing Gallagher Mega Anchor around the chain of ponds site
Insert right: New electric fencing up around the chain of ponds site
Background: The chain of ponds site now protected by Gallagher fencing*

Coastcare Impact

Finalists for the National 2022 Coastcare Award, Budgewoi Beach Dunecare's (BBDC) passionate group of volunteers have been instrumental in successfully implementing innovative restoration techniques along 2km of the Budgewoi coastline.

Led by lifelong coastcarer Phil Heaton, BBDC has transformed what was once a degraded, weed infested, sand mined wasteland into a balanced coastal ecosystem, improving biodiversity and

overturning decades of dune degradation. Their activities include:

- Restoration of sand dune ecosystems and securing their biodiversity;
- Propagation, planting tube stock, direct seeding, and transplanting locally indigenous plants;
- Site vegetation and weed management, maintenance and monitoring;
- Access way, boardwalk, and viewing platform design

- and construction;
- Beach Profiling, fore-dune realignment, fore-dune stabilisation, and monitoring;
- Improving the connectivity of Ecologically Endangered Communities by linking fragmented coastal landscapes back to linear corridors and extending site biodiversity.

To support their work, BBDC maintain a propagation igloo fitted with an automatic watering system that can house over 5,000 tube stock of resilient, locally indigenous plants. This has resulted in BBDC having propagated over 90% of their own plantings including Banksia, Bangalay and Coast Wattle. Their spectacular planting success has led to a significant increase in local biodiversity, with echidnas,

wallabies and numerous vulnerable birds including the Powerful Owl, Diamond Firetail and the Black Chinned Honeyeater being sighted in the area.

Enthusiastic about fostering a passion for coastcare in the local community and inspiring future generations of coastcarers, BBDC has also partnered with primary, secondary and tertiary education institutions to carry out dune restoration works. One of their most long-standing partnerships is with Newcastle University whose students have been engaging in activities including monitoring rehabilitated foredune profiles and vegetation to demonstrate the impact of BBDC's work on Budgewoi's coastal dune systems.



Below: Volunteers from Budgewoi Beach Dunecare at a restored site

Junior Landcare Impact



Students at Bacchus Marsh Grammar - Staughton Vale Campus on planting day

For the fourth year, Landcare Australia partnered with the Victorian Government's Department of Environment, Land, Water and Planning to deliver the 2021 Victorian Junior Landcare and Biodiversity Grants.

In July 2021, Landcare Australia distributed \$413,000 of funding from the Victorian Government to 111 grant recipients, including Bacchus Marsh Grammar which received a \$4,500 grant to restore threatened ecosystems.

The school's Staughton Vale Campus is on 80 hectares and backs onto the Brisbane Ranges National Park. To further extend the nature corridor for native flora and fauna between the National Park and their campus, Bacchus Marsh Grammar set about creating and restoring habitat and revegetating farmland cleared for grazing, with a mix of local indigenous plants.

Not only will this nature corridor create a cool refuge of vegetated areas for native wildlife in an

increasingly hot and dry climate, the revegetation will also protect otherwise cleared land from erosion during more frequent and intense rain storm events. The project was supported by Roger MacRaild, Moorabool Landcare Network's Landcare Facilitator, who worked with students during the planning and planting phase to ensure a good survival rate of the 500 indigenous plant species that were planted.

By participating in the project, students have not only learnt more about the importance of habitat

restoration, they have also discovered the broader benefits of indigenous vegetation when it comes to climate change. This has positioned them well to raise awareness about climate change within their families, among friends and in community settings.

"I feel good that we are creating more habitat for the brush tailed phascogale and are also helping to offset carbon emissions," shared one of the school's Environmental Science students.

CHEP volunteers in Sydney supporting the Greater Sydney Landcare's 'Creating Canopies' project



LANDCARE
AUSTRALIA
PARTNERSHIPS

Government Partners

Landcare Australia has worked collaboratively with federal, state and local governments and their agencies for over 30 years to support the landcare community with activities that:

- support the sharing of knowledge and promote the development of community leadership and resilience
- recognise and celebrate the achievements of the landcare community
- encourage participation in landcare activities and the recruitment and retention of volunteers
- attract government, corporate and philanthropic funding and in-kind support for practical, deliverable and community focused projects, as well as programs that improve environmental and community wellbeing outcomes
- support the adoption of sustainable agriculture practices that will deliver a more productive and profitable agriculture industry.



AUSTRALIAN GOVERNMENT DEPARTMENT OF AGRICULTURE, FISHERIES AND FORESTRY

The National Landcare Program is a key part of the Australian Government's commitment to natural resource management, and is administered by the Department of Agriculture, Fisheries and Forestry. Landcare Australia receives funding from the National Landcare Program to deliver the following projects: National Landcare Conference, the National Landcare Awards, the State & Territory Landcare Awards, the Bob Hawke Landcare Award, Landcare in Focus magazine, Landcarer and the Landcare Farming Program.



AUSTRALIAN GOVERNMENT DEPARTMENT OF ENVIRONMENT, ENERGY, CLIMATE CHANGE AND WATER

Landcare Australia received funding along with other landcare stakeholders from the former Department of Agriculture, Water and the Environment for bushfire recovery. In May 2021, the Australian Government announced the landmark \$14 million Landcare Led Bushfire Recovery Grants program that delivered 111 practical, innovative and community-driven projects in bushfire affected areas across the east coast and South Australia.

Landcare Australia was a large-scale service provider for the 20 Million Trees Program from 2015 – 2020. During this period Landcare Australia delivered seven large-scale revegetation projects across South Australia and Victoria. These projects supported threatened species conservation, engaged the community, helped create a biodiverse, resilient landscape and significantly contributed to achieving the Department's goal of 20 million trees.



VICTORIAN GOVERNMENT DEPARTMENT OF ENVIRONMENT, LAND, WATER AND PLANNING

Through the Victorian Landcare Program, the Victorian Government's Department of Environment, Land, Water and Planning (DELWP), provide funding and support to Landcare Australia to leverage corporate and other non-government funding for Landcare projects in Victoria. The support provided by DELWP helps to increase the funding available to Victoria's Landcare community for a diverse range of Landcare projects across the state. DELWP also partner with Landcare Australia to deliver the Victorian Junior Landcare and Biodiversity Grants that provide young people with the opportunity to engage in hands-on biodiversity focused on-ground projects or learning activities that provide both environmental and educational outcomes, as well as health and social benefits.

Corporate Partners



a2 Milk® has been partnering with Landcare Australia for five years, to deliver projects that help pioneer a future of Dairy that is good for people and the planet. In 2022, a2 Milk® Australia awarded seven grants of up to \$35,000 to a2 Milk® dairy farmers from New South Wales, Victoria and Western Australia to enhance sustainability and achieve positive environmental and business outcomes on their farms. This year projects focussed on wastewater management, solar power installation, water infrastructure upgrades, effluent management and compost and manure management.

a2 Milk® is dedicated to supporting local landcarers, and many of the grant recipients are family owned and operated farms. In 2022 this includes Jaime Forster's second-generation dairy farm in Cohuna, Victoria, and Timothy Billing's family run farm in Dorrigo, New South Wales.

Now in its fifth year, The a2 Milk® Sustainable Agriculture Landcare Grants have invested an amazing \$850,000 in 30 sustainable projects on Australian a2 Milk® dairy farms. There are 25 certified a2 Milk® dairy farms across Australia. Each cow on these farms has been selected to naturally produce only the A2 protein and none of the A1 protein found in regular cows' milk.



The Australian Home Heating Association (AHHA) is a long-time supporter of Landcare Australia, committed to promoting home heating solutions that benefit consumers and the environment. In September 2021, the AHHA Grants Program provided \$10,000 of funding to support two community projects, focussing on increasing engagement and involvement in environmental issues. The Cardinia Environmental Coalition in Victoria received \$5,000 to conduct an educational workshop teaching the importance of caring for reserves to provide refuges for flora and fauna, following bushfires. The Environmental Connections group in South Australia received \$5,000 for their community workshop project. The workshop targeted seven to 11-year-old students and focused on biodiversity, First Nations perspectives and recycling/improving waste management.



Banrock Station, the Australian eco-friendly wine brand from Accolade Wines, partnered with Landcare Australia to plant 100,000 native trees and shrubs in 2021 and 2022. Building on a long history of collaboration, including planting 80,500 trees on Banrock Station as part of the Australian Government's 20 Million Trees Program, Banrock Station and Landcare

Australia's latest undertaking has seen five planting projects take place across South Australia since 2021. The five sites comprise of Sedan, Angus Valley, Mannum, Rockleigh and Cromer, where the revegetation will help to increase landscape connectivity while also helping to improve conservation efforts for a number of endangered or vulnerable plant and animal species. The ongoing commitment from Banrock Station to the environment stems from their dedication to restoring and protecting wetlands and woodlands on Banrock Station, which led to the property being listing as a 'Ramsar Wetland of International Importance' in 2002.



Over the past year CHEP partnered with Landcare Australia to hold seven corporate volunteering events, supporting their employees to make a positive impact in the communities in which they operate.

Seventy CHEP employees registered for events supporting the activities of local landcare groups in Western Australia, Victoria, Queensland and New South Wales. Together with local groups and volunteers they planted 3,700 seedlings- including over 2000 in Perth's wetlands to improve breeding areas and habitat for local water birds, propagated 800 seedlings for urban landcare projects in Melbourne, and took part in close to 2ha of weed control in the riparian areas of the Parramatta River in Sydney and Oxley Creek in Brisbane. Giving special focus to engaging with First Nations landcare practices, CHEP employees also tended to Indigenous bush food gardens and participated in cultural knowledge sharing from First Nations peoples in Sydney (including a Welcome to Country).

In line with CHEP and Landcare Australia's shared commitment to the United Nations Sustainable Development Goals, the outcomes of the events contributed to goals including Good Health and Wellbeing (Goal 3), Life Below Water (Goal 14) and Life on Land (Goal 15).

COUNTRY ROAD

Landcare Australia is proud to partner with iconic Australian fashion lifestyle brand, Country Road. This ground-breaking alliance has initiated The Biodiversity Project, which supports cotton growers in biodiversity restoration projects as part of Country Road's commitment to supporting local communities and the environment. The Biodiversity Project has now supported four projects with farming families in the Namoi Valley of NSW, including the Kahls, the Watsons, the Hamparsums and the Pursehouses. The projects have been impacted by the flooding in the region over the last 12 months, causing delays and site destruction. Country Road has committed to fund the replanting of these affected areas. The ongoing commitment from Country Road will support the long term project aims to increase habitat and shelter for native animals, reduce erosion along the river bank, improve water quality and enhance biodiversity.

Corporate Partners



In May 2022, Landcare Australia and the Coca-Cola Australia Foundation (CCAF) launched the Farm Dam Restoration project, a three-year community partnership to transform degraded farm dams across New South Wales, Victoria and South Australia. Through the partnership, CCAF is continuing its work with partners and technologies to protect rivers, oceans, and local ecosystems to ensure they thrive.

CCAF has committed a grant of \$600,000 to the project as part of their pledge to help address UN Sustainable Development Goal 6 'Clean Water and Sanitation' by creating solutions for the availability and sustainable management of water in Australia.

Using the Landcare Australia model of bringing local communities together to address environmental and sustainable land management issues, the project aims to restore ecological activity and function to degraded dams through activities including installing stock proof fencing, building hardened access points and planting native vegetation. In addition, the Farm Dam Restoration project will also facilitate knowledge sharing across a broad cross-section of the farming community, encouraging sustainable and innovative farm dam enhancement.

Phase One of the project has launched in South Australia with three sites identified to provide an initial showcase of how degraded farm dams can be transformed into thriving ecological communities, whilst also improving on-farm productivity.



4 Pines Brewing Co. partner with Landcare Australia to deliver projects that enhance sustainable agriculture outcomes in the brewer's supply chain. In late 2021, when 4 Pines became the official beer partner of the Australian Men's Cricket Team for the 2021/2022 Summer of Cricket, they also expanded their partnership with Landcare Australia by committing to plant four trees for every four scored by the national team over the summer. This translated to 4 Pines funding the planting of 44,444 native Australian trees, shrubs and groundcovers at Cape Jervis on South Australia's Fleurieu Peninsula.



In September 2021, the recipients of the second round of the Gallagher Landcare Fencing Grants were announced. 14 groups and graziers across five states received a total of almost \$110,000 in support for projects looking to use innovative fencing methods to achieve tangible environmental or sustainable agriculture outcomes.

Despite delays due to the Covid-19 pandemic, the projects exceeded all expectations with fantastic outcomes including the Odonata Foundation using Gallagher iSeries Energizer fencing to transform Widgewah Conservation Reserve into Australia's largest fenced safe haven for the Southern Brush-tailed Rock-wallaby, and Yinnar, Yinnar South Landcare Group installing Gallagher Mega Anchor and Gallagher Westonfence to deter pest animals from the newly revegetated Billy's Creek.

Following the success of the 2021 grants, in May 2022, Gallagher Australia announced a total pool of \$136,000 in funding would be provided to Individuals and Landcare groups across Australia to support of projects aligned with priority areas of conservation, grazing management and feral animal exclusion. Within this funding pool, four grants were also offered specifically for farm dam restoration projects.



In late 2021, Hawke's Brewing Co. kicked off a series of grants, providing funding for local groups in New South Wales and Queensland to engage in landcare activities.

In New South Wales, the Mudcrabs, with the support of Greater Sydney Landcare Network, engaged in the removal of noxious weeds including lantana and green and yellow cestrum, restoring native vegetation connectivity along the riparian areas of Marrickville Golf Course and Beaman Park.

In Queensland, Woodfordia's TreeHuggers were able to undertake repairs and upgrades to their popular native plant nursery. This project site is of particular significance to the Hon. Bob Hawke AC's legacy as he was a key speaker at the Woodford Folk Festival for many years.

May 2022 also saw Hawke's Brewing Co. release their third vintage of Legend IPA with \$1 from every can sold going to Landcare Australia to support mangrove conservation and enhancement in Queensland.

The funds raised are assisting the Cairns & Far North Environment Centre by funding equipment and resources to upskill volunteers, Indigenous Ranger groups and Landcare groups, as well as increasing the capacity of the citizen-science group to obtain data on tidal wetland values and threats.

Corporate Partners



Konica Minolta has been a Landcare Australia partner since 2011. In addition to the in-kind provision of printers to the Landcare Australia offices in 2022, the partnership provides Konica Minolta staff with opportunities to participate in environmental volunteering, helping them to make a positive and meaningful contribution to our environment. In 2021/22, Konica participated in two events in NSW and Western Australia, contributing 80 hours of work. Working alongside community groups and volunteers, Konica Minolta employees planted 1,400 seedlings, including 1,200 in wetland areas supporting improved habitat; and 200 plants in native bushfood gardens, where they learnt about traditional knowledge and the importance of bushfoods to First Nations people.



In October 2021, KPMG partnered with Landcare Australia for a “Month of Action” featuring five exciting corporate volunteering events in South Australia, Western Australia and Queensland.

Despite another year of covid-related setbacks limiting the number of events, as well as extreme rain and storms leading to two events being rescheduled, 109 KPMG employees joined local Landcare groups to support their work protecting our environment and helping to create more resilient and sustainable communities. Over the course of 545 hours of volunteer work, they planted almost 7000 native seedlings to rehabilitate degraded land, removed 15kg of litter from waterways and undertook 6,433m² of weed control, as well as participated in First Nations cultural knowledge sharing through a Welcome to Country and Smoking Ceremony.

The outcomes of the events aligned with nine of the UN Sustainable Development Goals including Good Health and Wellbeing (Goal 3), Sustainable Cities and Communities (Goal 11) and Responsible Consumption and Production (Goal 12). Feedback from the five Landcare host groups was also exceptional, a credit to KPMG’s corporate volunteers and the ongoing partnership with Landcare Australia.



Latina™ Fresh, a General Mills brand, partnered with Landcare Australia to support farmers in improving the management of their soils and other natural assets. Trials were undertaken through the partnership to evaluate methods for minimising the impact of drier seasons on grain crops with growers in north-west New South Wales. The Northern Grower Alliance and

grain growers undertook trials on cover cropping to evaluate the effects of a variety of cover crops on soil moisture levels and crop yield. Trials were also undertaken on stubble management, with nine trials commencing on farms around the Moree region to evaluate the impact of harvest stubble height on fallow efficiency and subsequent crop yields.

Although some trials were adversely affected by higher than normal rainfall, outcomes from the successful trials have provided farmers with valuable information to help influence the management of fallow periods, and in-crop water use efficiency. Latina™ Fresh has been making fresh pasta using Australian durum wheat for over 20 years. Their pasta relies on high quality Australian durum wheat, 50 to 70 percent of which is grown in North-West New South Wales.



Aligned to Lendlease’s purpose – to create places where communities thrive, Lendlease has partnered with Landcare Australia’s Junior Landcare program since 2019. Most recently, in 2022 13 primary and high schools in Queensland, Western Australia, New South Wales and Victoria were the recipients of Lendlease Junior Landcare Grants. The grants of up to \$5,000 each and totalling \$38,500 in funding, were awarded for environmental projects focussing on biodiversity, food production, First Nations perspectives, waste management or a combination of these.



Meat and Livestock Australia (MLA) is a not-for-profit research and marketing service provider for the Australian red meat and livestock industry, who in partnership with Australian government bodies, research bodies and industry stakeholders works to foster the long-term prosperity of the Australian cattle, sheep and goat sector. MLA began its partnership with Landcare Australia in early 2019. In late 2021, schools in the peri-urban areas of Melbourne, Brisbane and Sydney were invited to apply for funding for environmental projects which have a focus on where your food comes from and biodiversity. Nine schools received grants of up to \$2,000 each to fund projects ranging from upgrading a school community garden to growing an indigenous bush tucker garden.

“The project enabled us to engage students (post pandemic remote learning periods) through direct connections with one another and their environment - connection being something they were craving,” shared an educator from the Lakes South Morang College in Victoria about the far-reaching outcomes of the grant, which has also seen 175 plants established at the school.

Corporate Partners



This past year saw the completion of the two exciting projects funded by the \$80,000 Nature Valley™ Trails Landcare Grants. Launched in 2020, the grants support the rejuvenation of bushfire affected walking trails.

In South Australia, Friends of Lobethal Bushland Park and Adelaide Hills Council completed their project to rejuvenate and enhance Lobethal Bushland Park following the Adelaide Hills' December 2019 Cudlee Creek bushfires which burnt with such heat and intensity that the park suffered an unprecedented 95 percent loss of flora. Works included building a 14-metre boardwalk and diverting surface water from eroded paths and completed restoration work. The project's success had led to local residents and nature lovers from all over South Australia and beyond enjoying safely walking through the magnificent bushland park.

In New South Wales, Nambucca Valley Landcare finalised their fantastic enhancements to the Summit to Sea Walking Track. Works on the 12km trail traversing through Yarriabini National Park included adding boardwalks, steps and managing vegetation. While completion was delayed due to the COVID-19 lock-downs, visitors can now walk across a mosaic of different habitats and have the opportunity to connect to an area that is highly significant to the Dughutti, Ngambaa and Gumbaynggirr Aboriginal people.



Over the past year nbn co. partnered with Landcare Australia on seven corporate volunteering events as part of their goal to drive greater engagement and awareness about key sustainability and community priorities within their organisation.

Despite COVID restrictions impacting the number of volunteers, 105 nbn co. employees registered to attend the events in Victoria, New South Wales, Western Australia and Queensland. During 420 volunteer hours, participants engaged in various impactful landcare activities ranging from propagating over 3000 seedlings and establishing over 1200 plants, to undertaking 2.5ha of weed control and removing 9kg of litter from beaches and dunes.

The outcomes of the volunteering activities undertaken aligned to eight of the seventeen UN Sustainable Development Goals, including good health and wellbeing (Goal 3), sustainable cities and communities (Goal 11) and climate action (Goal 13). The combination of both the environmental and social outcomes as a result of the activities demonstrates how nbn co. and Landcare Australia's partnership continues to benefit the health and wellbeing of our environment and communities.



In 2020, News Corp Australia partnered with Landcare Australia to make a significant bushfire recovery donation of \$300,000 to support two Landcare projects in Victoria and Queensland.

Both projects wrapped up in the past year, not only achieving significant environmental outcomes through establishing close to 20,000 plants, but the funded organisations also reported strengthened connections through community engagement, building resilience and preparedness, and raising awareness about habitat protection.

Facilitated by local Landcare groups Far East Victoria Landcare (VIC) and Capricornia Catchments (QLD), the projects engaged landholders, volunteers and local communities- directly involving 449 people, with 404 volunteers contributing 3,623 hours to the efforts. Knowledge was shared, skills passed on and awareness raised through 18 community days, field days and workshops.

In addition to the large number of native seedlings established, 5,000 square metres of weed control was undertaken across both projects, and to support native fauna species in the target areas, groups also installed 778 nest boxes or artificial habitats.

Both projects resulted in impressive environmental, social and community benefits, and form part of News Corp Australia's ongoing support for communities, individuals and wildlife affected by the 2019/2020 bushfires.



Syngenta Australia and Landcare Australia announced their partnership to enhance biodiversity across selected sites in Australian agricultural landscapes in April 2021. The Syngenta Enhancing Biodiversity Project, managed by Landcare Australia, aligns with Syngenta's 2020-2025 Good Growth Plan, which aims to support farmers to combat the impacts of climate change and enhance biodiversity for a more productive agricultural industry. Since then, two projects focusing on improving management of biodiversity in agriculture have been completed.

The Goolwa to Wellington Local Action Planning Association undertook a project restoring vital habitat across agricultural land linking Monarto Conservation Park and Ferries McDonald Conservation Park in South Australia. This project resulted in more than 13 hectares of revegetation that will see at least 20,000 local native plants established. The second project saw more than 50kg of seed sown in a direct seeding project delivered on South Australia's Eyre Peninsula, reducing soil erosion across 1,000 hectares of cropping land. Both projects will see significant environmental outcomes that align with Syngenta's Good Growth Plan, creating biodiverse habitats for endemic species, and restoring and promoting native ecology.

Corporate Partners



Established in 2014, the partnership between Transurban and Landcare Australia supports Transurban's commitment to strengthen communities and enhance environmental outcomes along its road network. In addition to funding regeneration projects, the partnership provides opportunities for Transurban employees to contribute to restoring natural ecosystems while making an important contribution towards the UN Sustainable Development Goals, such as ensuring the availability and sustainable management of water and sanitation for all (Goal 6) and taking urgent action to combat climate change and its impact (Goal 13). In 2021/22 teams from Transurban contributed 210 hours of volunteer work through five corporate volunteering events across Melbourne. Working alongside community groups and volunteers, the teams propagated over 3,000 native seedlings, planted over 1,000 native seedlings to improve riparian areas along urban creeks, removed weeds and rubbish from coastal ecosystems, and conducted litter audits to contribute to healthier waterways litter strategies.



Since 2005, VicTrack has partnered with Landcare Australia to provide funding to protect and enhance areas of native vegetation on railway and other land through local Landcare groups. In 2021-22, the five groups funded – Woomelang Lascelles Landcare Group, Upper Goulburn Landcare Network, Whittlesea and Surrounds Blackberry Action Group, Bellarine Catchment Network and Basalt to Bay Landcare Network – achieved significant environmental and community outcomes.

Activities undertaken across their respective project sites included weed control, revegetation, habitat restoration, and the protection of native flora and fauna species. For example, the Great Victorian Rail Trail serves an important ecological function and requires ongoing maintenance and supplementary planting to help achieve biodiversity outcomes. In 2021-22, VicTrack funding for this project site contributed to managing sections of high priority grassy woodlands; weed control was undertaken, targeting high threat weeds and minimising the use of herbicide; and nesting boxes were installed, providing nesting sites for the threatened Brush-tailed Phascogale and Squirrel Glider, supported by local school students, scouts and Landcare group members.



Late 2021 saw the completion of the landmark Wires Landcare Wildlife Relief and Recovery Grants program. The ground-breaking alliance between Wires and Landcare Australia, provided local Landcare environment networks and community groups with access to \$1.185 million in funding, supporting them to lead and coordinate 64 exciting wildlife support and habitat restoration projects.

Over 50 threatened fauna species including Regent Honeyeaters, Platypus, Koalas and Greater Bilbies benefitted from the program which saw almost 100,000 plants established, over 1,900 nest boxes installed and 435 biodiversity surveys carried out.

In June 2022, Wires renewed their partnership with Landcare Australia, and along with Queensland University of Technology (QUT) launched the WildSeek Project: Community Wildlife Intelligence Hubs, taking the first step toward building a national conservation AI network.

The Wildseek Project will establish and support an initial network of five Community Hubs for the conservation and rescue response of native species. Partners are providing over \$1,500,000 in funding over three years to support the project, with a significant contribution by Wires. QUT will serve as the National Conservation AI Analytics hub where drone footage collected around the country will be analysed using a QUT created algorithm to identify wildlife populations.



In 2022, Woolworths partnered with Landcare Australia for a fourth round of the Woolworths Junior Landcare Grants to help grow the next generation of environmental champions. A total of 1,054 primary schools and early learning centres across the country received grants of up to \$1,000 to fund hands-on projects that focus on sustainable food production, improving waste management practices or enhancing native habitats and biodiversity.

Since launching in 2018, more than 3,800 school groups have shared over \$4 million in grant funding through the Woolworths Junior Landcare Grants program.

The Junior Landcare Learning Centre with over 85 learning activities, is also made possible with the support of Woolworths. In May 2022 Junior Landcare published 10 new First Nations perspectives Learning Resources on the website to help educators and children learn more about how they can have a connection to Country.

Decade of Restoration Partnerships

The UN Decade on Ecosystem Restoration runs from 2021 to 2030, and focuses on “the protection and revival of ecosystems all around the world, for the benefit of people and nature.”

Landcare Australia supports this initiative, and is part of the Darwin Agreement, a consortium of Australian environmental organisations urging concerted support of the UN Decade on Ecosystem Restoration by all sectors of society.

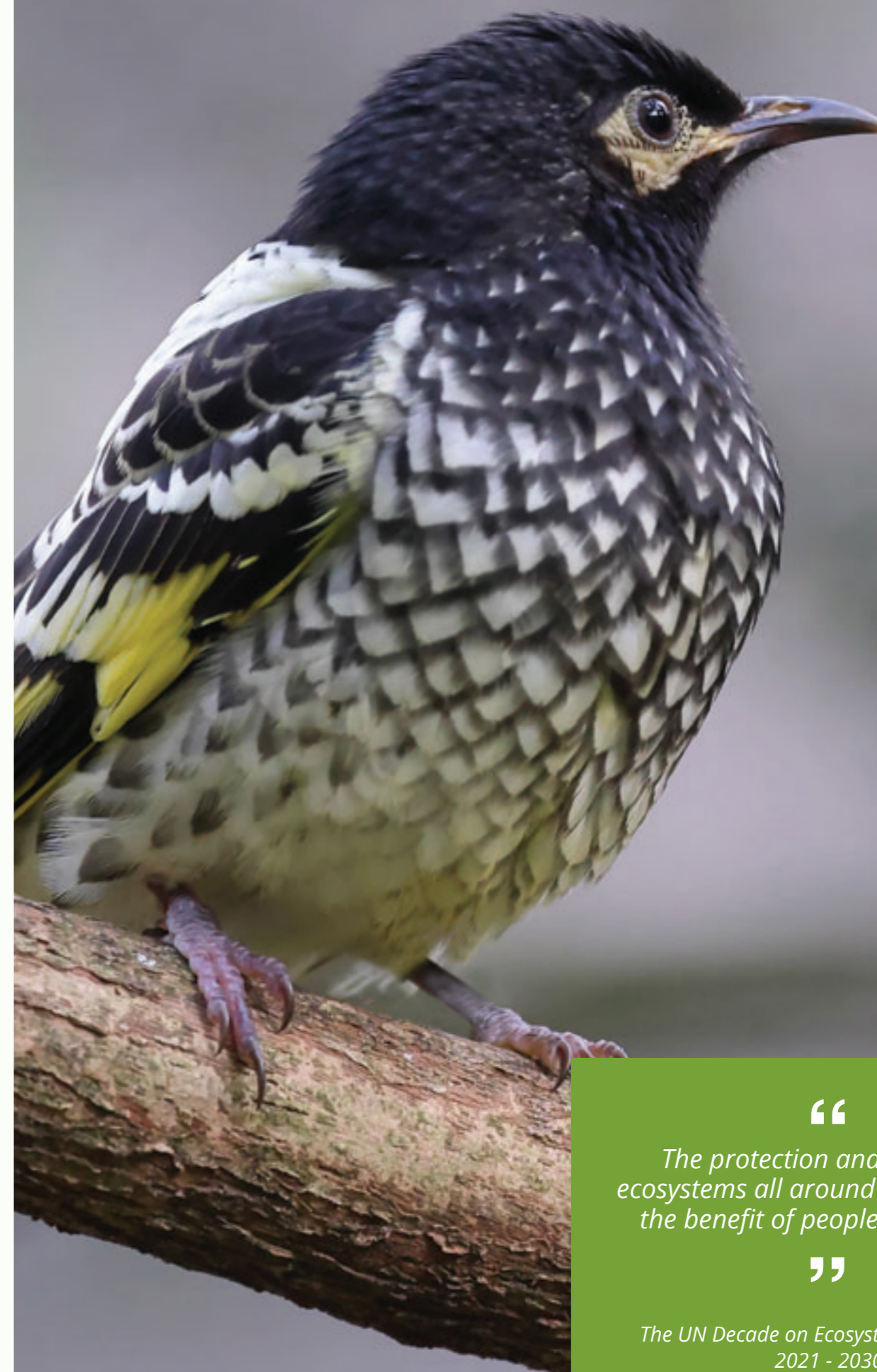
To enable the business community to engage with this initiative, Landcare Australia worked with partners to fund tree planting projects in South Australia and Victoria.

The Regent Honeyeater is one of Australia’s rarest honeyeaters, and listed as Critically Endangered. MobileMuster supported the Regent Honeyeater Project in Victoria, a group that has been working to improve habitat for this bird and other species since 1996. 2,000 trees, shrubs and groundcovers were planted to connect biodiverse areas from Humphries Hill to Boggy Bridge in the north east of the State.

Essential Flavours supported the Sturt Upper Reaches Landcare Group in South Australia in a project focused on restoring and improving habitat and connectivity for the Southern Brown Bandicoot. 2,000 native plants were planted to support a vegetation corridor to facilitate movement of bandicoots between existing populations in Mark Oliphant Conservation Park and the Sturt River.

Nature’s Own supported five projects in Victoria, combining environmental restoration with wellbeing. The South Gippsland Landcare Network and Bass Coast Landcare Network combined tree planting and cycling in their projects.

The Latrobe Catchment Landcare Network hosted a tree planting event, and brought a group of interested community members on a bushwalk through Morwell National Park, raising awareness of the importance of protecting the state’s biodiversity, and connecting with the aim of the UN Decade on Ecosystem Restoration.



“

The protection and revival of ecosystems all around the world, for the benefit of people and nature

”

*The UN Decade on Ecosystem Restoration
2021 - 2030*

In-Kind Supporters

Landcare Australia is grateful to have in-kind support from many organisations that provide multiple benefits to the landcare community. They include:



KPMG Australia continues to support Landcare Australia in sharing the results of the significant pro-bono research and development of the study *Building resilience in local communities: The wellbeing benefits of participating in Landcare*. This report is available to the landcare community as a free resource on the Landcare Australia website



Australian Community Media (ACM) is a media partner and their national reach helps Landcare Australia to promote the thousands of landcare people and projects in communities across Australia.



Herbert Smith Freehills and **Norton Rose Fulbright** provide valued in-kind legal support





LANDCARE
AUSTRALIA
GOVERNANCE
FINANCIAL

Capricornia Catchments volunteers with nestboxes secured through News Corp Australia bushfire recovery funding

Landcare Australia Board of Directors

BOARD OF DIRECTORS

Landcare Australia is governed by a skills-based board comprising eight non-executive directors. Directors oversee the organisation's direction, governance and work with management to develop and execute the strategic plan. Our board members offer a range of skills including; finance, legal, risk management, government relations, business, agribusiness, environment and water management.

BOARD ATTENDANCE

Doug Humann AM, Chairman	7/7
Robert Nicholson	7/7
Peter Sutherland	7/7
Ricky Archer (appointed 1/1/2022)	2/7
Naomi Edwards (appointed 1/1/2022)	3/7
Anna Hooper (appointed 1/1/2022)	3/7
James Walker (appointed 1/1/2022)	3/7
Rachel Gatehouse (resigned 22/6/2022)	7/7
Jan Davis (resigned 31/12/2021)	4/7
Rebecca Staines (appointed 1/7/2022)	

DIRECTOR PROFILES

Doug Humann AM

Doug Humann AM (GAICD, BA (Hons), Dip ED) was appointed chairman of Landcare Australia in 2016. With more than 40 years involvement in regional Australia, including 30 years leadership experience in the environmental sector, Doug led Bush Heritage Australia (1997–2011) to national prominence before establishing his own consultancy. Doug is primarily engaged with non-government organisations, Indigenous groups and natural resource management/catchment management authorities. Doug provides advice and support on a range of strategic, investment, project and governance matters, and is particularly involved in building partnerships, collaborations and mentoring.

Jan Davis (resigned 31/12/21)

Jan Davis (MAGribus, MEnv Plan, BEc, MAICD, FAIM, FAusAE) has held leadership roles in a number of industry groups in the agriculture and natural resources sector. She is currently the CEO of RSPCA Tasmania. An experienced non-executive director, Jan has served as a former CEO of Launceston Chamber of Commerce, Agribusiness Australia, Tasmanian Farmers & Graziers Association, Growcom (Queensland Fruit & Vegetable Growers Ltd.), Australian Mushroom Growers Association, Greening Australia Ltd. and the Nursery Industry Association of

Australia. She was also former director of the Tasmanian Institute of Agriculture, Plant Health Australia Ltd. Horticulture Australia Ltd., and Rural Industries Research and Development Corporation. She is currently an elected member of the Northern Midlands Council, and a member of the Tasmanian Resource Management and Planning Appeal Tribunal.

Peter Sutherland

Peter Sutherland (BA, BSc (Hons) has had an extensive senior executive career in the public and private sectors in water and natural resource management. He retired from GHD as Business Leader Water Resources. Peter's positions include; Deputy Director General DIPNR, NSW, Deputy Secretary DNRE, VIC, Deputy Commissioner on the Murray Darling Basin Commission, member of the National Land and Water Resources Audit, member of the National Taskforce on Sustainable Agriculture, and member of the Prime Minister's Land Management Task Force. Peter is a former president of the University of Melbourne Alumni Association, Sydney branch.

Rachel Gatehouse (resigned 22/6/22)

Rachel Gatehouse (BEcon, CPA, MAICD) has an accomplished career in banking and financial services spanning over 25 years. Presently she is Chief Financial Officer at Archistar.ai. Prior to that she was Chief Operating Officer and Chief Financial Officer at venture capital backed Brighte Capital and Chief Financial Officer of HBOS Australia and Head of Finance for the Retail Division ANZ. She has extensive experience in complex regulatory environments across both large established organisations as well as fast growing fintechs. In her executive career, Rachel has run large technology programs and driven cultural change programs. Rachel has significant governance experience, including a director of Capital Finance Australia Limited, and in 2017 was acting Chief Executive Officer at the Australian Institute of Company Directors.

Robert Nicholson

Robert Nicholson (BSc, LLM, MBA, GAICD) is a solicitor and Senior Advisor at Herbert Smith Freehills, a leading global commercial law firm. Robert is a former member of the Victorian Government's National Parks Advisory Council, and Melbourne Parks and Waterways Advisory Council. Robert is a director of Port of Melbourne, Alinta Energy and Baker Heart and Diabetes Institute.

Ricky Archer (appointed 1/1/22)

Ricky Archer is CEO of the North Australian Indigenous Land & Sea Management Alliance. Ricky has extensive NRM and governance experience, providing strategic input to various Indigenous and NRM organisations and committees, including as current board director of the Cooperative Research Centre for Developing Northern Australia; committee member of the Commonwealth

Marine Parks Northern Marine Park Advisory Committee; former committee member of the Commonwealth Minister for Environment Indigenous Advisory Committee; and former director of the NT Aboriginal Land Management Advisory Group. Now based in Darwin, he is a Djungan man from the Western Tablelands region of North Queensland.

Naomi Edwards (appointed 1/1/22)

Naomi Edwards (BenvSc, BComms [Honours], MInt&CommDev.) is the Co-Founder of Intrepid Landcare, a national network that inspires young people to act and lead with landcare and is a community engagement and communications specialist. Based in South-East Queensland, Naomi has a strong history of advocating for meaningful community participation in NRM, particularly in coastal and marine settings. Naomi is currently Campaign Manager for Change, an innovative communications organisation based in the Pacific that leads behaviour change campaigns for a range of sectors.

Anna Hooper (appointed 1/1/22)

Anna Hooper (M.Ag.Bus, B.Ag.Sc, Grad. Dip. Law, GAICD) is a highly regarded agribusiness professional with extensive national resource management, policy, finance and governance experience. Anna has a strong practical background in the wine industry, being a winemaker and viticulturalist in Australia and overseas. Anna has held various Board roles including with the SE NRM Board and Australian Vignerons. Anna is currently Manager, Industry Policy for Australian Grape and Wine, based in Adelaide.

James Walker (appointed 1/1/22)

James Walker is a fifth generation grazier operating Camden Park located near Longreach, Queensland. The property is a 8,000 Ha organic, global animal partnership (GAP) accredited cattle station that hosts agritourism and a large scale solar farm. Being a 2012 Nuffield Scholar and awarded Australian Farmer of the Year for excellence in diversification, James has built digital platforms and generated alternative businesses models to include environmental sustainability into farmer profit streams. James was a finalist for the 2020 Bob Hawke Landcare Award.

Rebecca Staines (appointed 1/7/22)

Rebecca Staines (BAgricSc, MAgic, GradCertComm, GAICD) has over 20 years experience in Australian agribusiness. Rebecca started her career as an agronomist and more recently has held various senior commercial agribusiness roles. Rebecca brings a strong background in agronomy, agribusiness management, agricultural sustainability, procurement and finance.

Rebecca is currently the National Sustainability Field Manager for Nutrien Ag Solutions and is passionate about



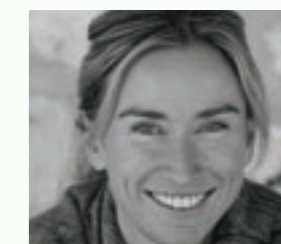
DOUG HUMANN AM



RICKY ARCHER



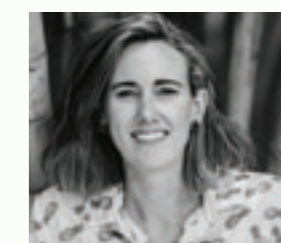
PETER SUTHERLAND



ANNA HOOPER



ROBERT NICHOLSON



NAOMI EDWARDS



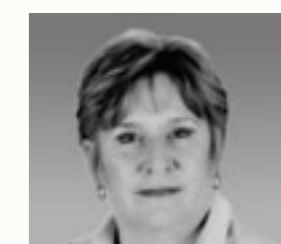
JAMES WALKER



REBECCA STAINES



RACHEL GATEHOUSE



JAN DAVIS

Landcare Australia Board of Directors

providing profitable and sustainable agricultural solutions to Australian growers.

FINANCE AND AUDIT COMMITTEE

Members of Landcare Australia's Finance and Audit Committee during the 12 months to 30 June 2022 were: Jan Davis, Committee Chair (resigned 31/12/21), Anna Hooper, Committee Chair, Robert Nicholson, James Walker, Doug Humann and Rachel Gatehouse.

Jan Davis, Committee Chair (resigned 31/12/2021)	4/8
Anna Hooper, Committee Chair	4/8
Robert Nicholson	7/8
Doug Humann	7/8
James Walker	4/8
Rachel Gatehouse (resigned 22/6/2022)	7/8

PARTNERSHIPS COMMITTEE

Members of Landcare Australia's Partnerships, Marketing, Communications and Fundraising Committee during the 12 months to 30 June 2022 were: Peter Sutherland, Committee Chair, Naomi Edwards, Doug Humann and Robert Nicholson.

Peter Sutherland, Committee Chair	7/7
Robert Nicholson	7/7
Doug Humann	7/7

COMPANY SECRETARY

The company secretary of Landcare Australia Limited is responsible for the legal and statutory compliance on behalf of the board. The company secretary as at 30 June 2022 is Janet Davison.

AUDITORS

The auditors for Landcare Australia Limited are Ernst & Young.



Statement of profit or loss and other comprehensive income

FOR THE YEAR ENDED 30 JUNE 2022	2022 (\$)	2021 (\$)
Revenue	18,640,996	8,235,843
Other revenue	98,529	652,674
Finance income	18,646	41,732
Total revenue	18,758,171	8,930,249
Partnerships, fundraising and grants management	(15,695,373)	(6,015,114)
Landcare services project delivery	(1,789,572)	(1,244,109)
Community engagement and awareness	(1,198,548)	(1,488,229)
Organisational support	(529,613)	(503,819)
Finance costs	(15,067)	(17,684)
(Deficit) before income tax	(470,002)	(338,706)
Income tax expense	-	-
(Deficit) for the year	(470,002)	(338,706)
Other comprehensive income	-	-
Total comprehensive (deficit) for the year	(470,002)	(338,706)

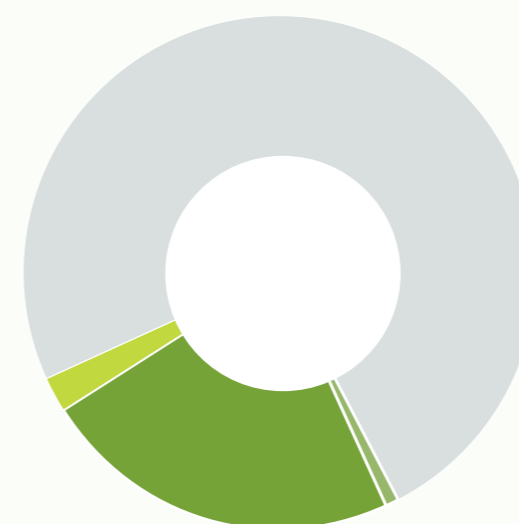
Statement of financial position as at 30 June 2022

	2022 (\$)	2021 (\$)
ASSETS		
Currents assets		
Cash and cash equivalent	11,698,063	16,691,198
Trade and other receivables	654,055	390,369
Total current assets	12,352,118	17,081,567
Non-current assets		
Property, plant and equipment	44,706	76,817
Right-of-use assets	307,121	458,002
Total non-current assets	351,827	534,819
Total assets	12,703,945	17,616,386
LIABILITIES		
Current liabilities		
Trade and other payables	1,895,531	2,122,494
Employee benefit liabilities	319,203	333,499
Contract liabilities	2,908,681	6,935,250
Lease liabilities	129,587	147,776
Total current liabilities	5,253,002	9,539,019
Non-current liabilities		
Employee benefit liabilities	16,758	43,593
Lease liabilities	216,593	346,180
Total non-current liabilities	233,351	389,773
Total liabilities	5,486,353	9,928,792
Net assets	7,217,592	7,687,594
Equity		
Retained earnings	7,217,592	7,687,594
Total equity	7,217,592	7,687,594

Statement of Cash Flows

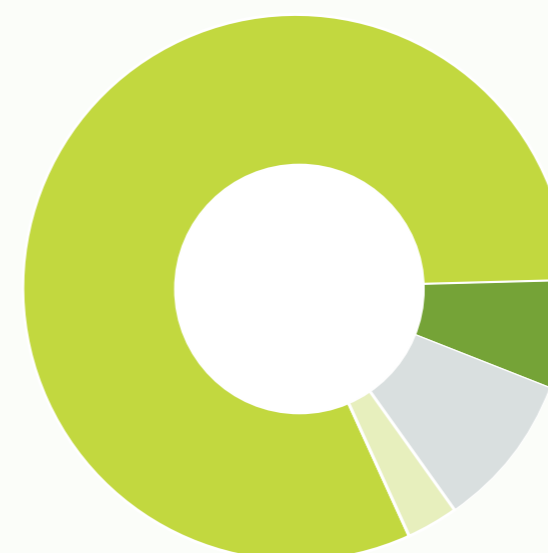
FOR THE YEAR ENDED 30 JUNE 2022	2022 (\$)	2021 (\$)
Operating activities		
Receipts from customers	14,449,270	14,599,573
Payments to suppliers and employees	(19,286,137)	(7,902,812)
Interest received	18,646	41,732
Interest paid	(15,067)	(17,684)
Net cash flows (used in)/from operating activities	(4,833,288)	6,720,809
Investing activities		
Purchase of property, plants and equipment	(12,071)	(22,816)
Net cash flow used in investing activities	(12,071)	(22,816)
Financing activities		
Payment of principal portion of lease liabilities	(147,776)	(163,073)
Net cash flows from financing activities	(147,776)	(163,073)
Net (decrease)/increase in cash and cash equivalents	(4,993,135)	6,534,920
Cash and cash equivalents at July 1	16,691,198	10,156,278
Cash and cash equivalents at 30 June	11,698,063	16,691,198

Financial Overview



REVENUE

- Total gross revenue from corporate partnerships and license fees 23.03%
- Total gross revenue from donations and bequests 2.08%
- Total gross revenue from government grants and fee for service 74.26%
- Total gross revenue from other sources and finance income 0.63%



EXPENSES

- Partnerships, fundraising and grants management 81.63%
- Community engagement and awareness 6.23%
- Landcare services project delivery 9.31%
- Organisational support and finance costs 2.83%

Pages 78-81 are a summary extracted from the audited General purpose (SDS) financial report for Landcare Australia Limited for the year ended 30 June 2022. This summary information should be read in conjunction with the full financial report, a copy of which can be found at www.landcareaustralia.org.au



Landcare
Australia



Above: Volunteers participating in the Landcare Led Bushfire Recovery Grants Program

© Landcare Australia Limited 2022 ABN 63 008 656 513

This work is copyright Landcare Australia. It may be reproduced in whole or in part for study and training purposes, subject to the inclusion of an acknowledgement of the source, but not for commercial sale or use. Reproduction for purposes other than those listed above requires written permission from Landcare Australia.